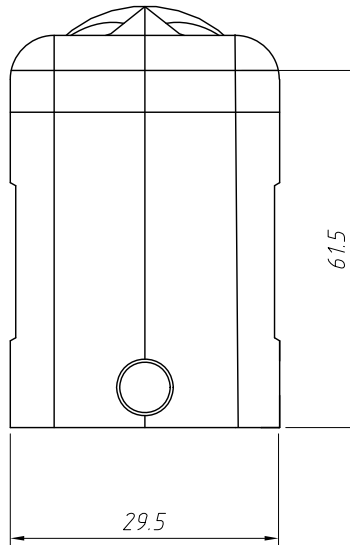
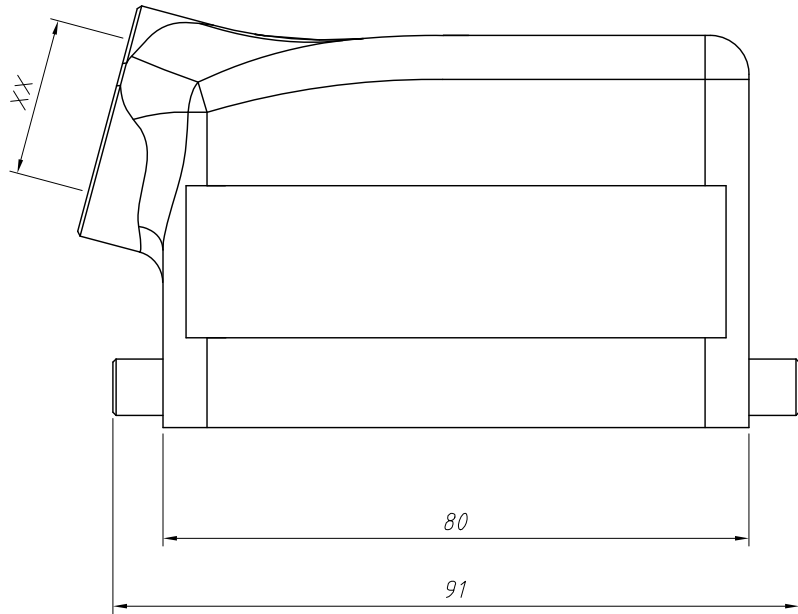


1  
RoHS Compliance

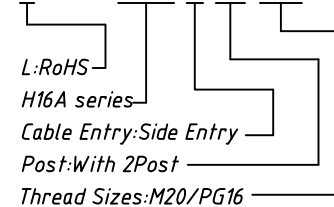
7		8	
REV	SYM	Revision Record	Appr. Date
V0	KLS01695	New Version Release	WuHao 2025-06-26



Material:  
 Housing: Aluminium Die-Cast, UL 94 V-0  
 Surface: Powder-Coated  
 Colour: RAL 7037 (Grey)  
 Temperatures range:  $-40^{\circ}\text{C} \sim +125^{\circ}\text{C}$   
 Degree of protection: IP65  
 (Acc. to IEC 60529 for coupled Connector)  
 Cable Entry: Side Entry  
 No. of Cable Entries: 1  
 Hoods/Housings Sealing: NBR

Order Information:

L-KLS1-H16A-R-2B-XX



ANGLE TOLERANCE	PROJECTION	Description:	Heavy Duty Connectors
$\pm 3^{\circ}$			H16A Series Hoods, Side Entry
GENERAL TOLERANCE	UNITS	mm	KLS P/N: L-KLS1-H16A-R-2B-XX
x.x $\pm 0.30$	SHEET SIZE	A4	
x.xx $\pm 0.20$	Draw:	WuHao	2025-06-26
x.xxx $\pm 0.10$	Check:	Daniel	2025-06-26



NingBo KLS ELECTRONIC CO.,LTD.