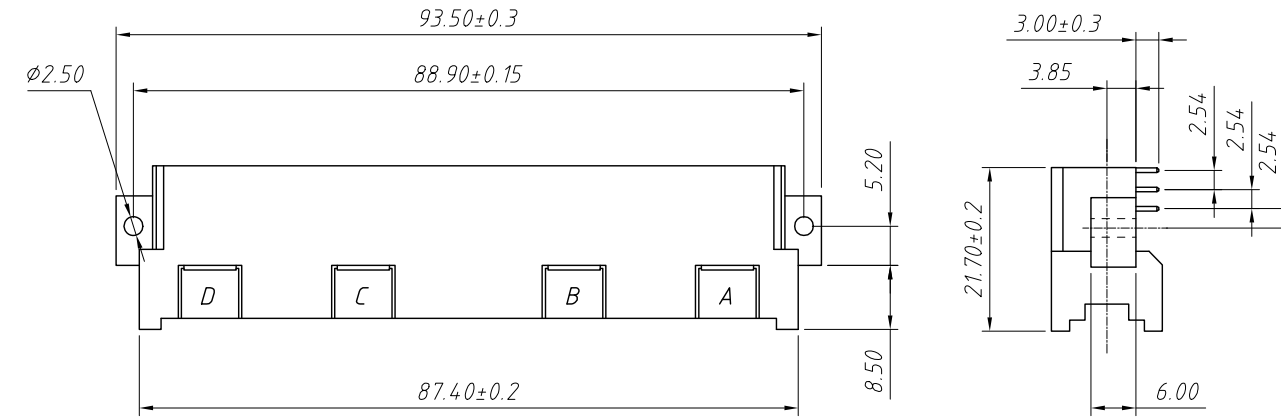


RoHS Compliance

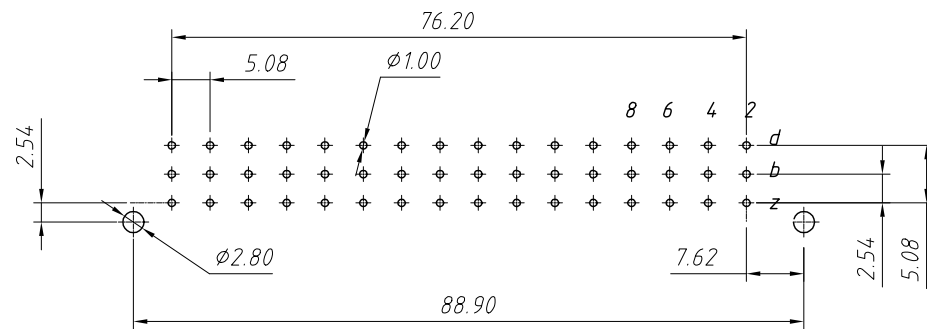
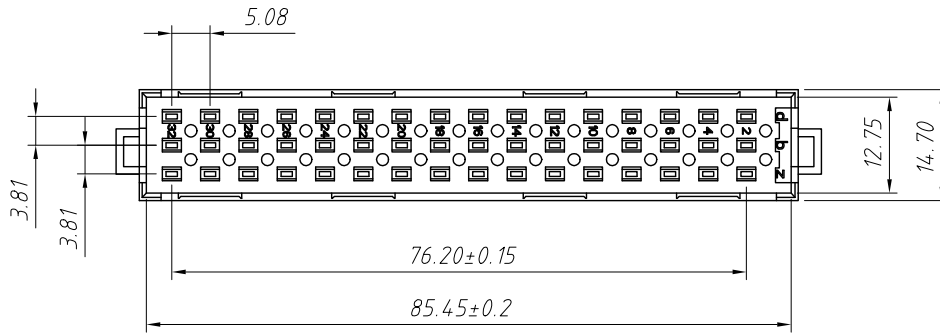
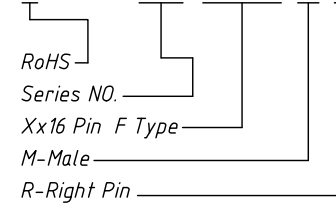


Note:
Material:
Housing:PBT+30%G.F UI94 v-0 Color:Beige
Contacts:Brass,2u"Gold Plated

Electrical
Current Rating:5.6 A
Contact Resistance:20 MΩ Initial
Insulation Resistance:1000 MΩ Min @ 500 VDC
Dielectric Withstanding Voltage:1000 VAC / Minute
Operating Temperature:-55°C To +125°C

Order Information

L-KLS1-F48-xxxxx-M R



Recommended PCB Layout
Tolerance:±0.05mm

Pitch	Position	Rows with Contact	Contact Arrange	Part Number
5.08mm	48	z b d		3348
	32	z--d		3232B
	32	z--b		3232A
	16	z--		3116

ANGLE TOLERANCE	PROJECTION	Description:
±3°		DIN4 1612 Connector With F Type
GENERAL TOLERANCE	UNITS	mm
x.x ±0.30	SHEET SIZE	A4
x.xx ±0.20	Draw:	Daniel
x.xxx ±0.10	Check:	Daniel
KLS P/N:		L-KLS1-F48-xxxxx-MR
SHEET SIZE		XX
Date:		2023-04-25
Check:		2023-04-25



NingBo KLS ELECTRONIC CO.,LTD.

1 RoHS Compliance

7		8	
REV	SYM	Revision Record	Appr. Date
V0	KLS01011	New Version Release	Song 2024-04-22

Notes:

1.Material:

Housing:PBT+30%G.F UL 94 V-0

Contacts:Copper Alloy,1u"Gold Plating

2.Electrical:

Current Rating:5.6Amps

Contact Resistance:15 mΩ Max

Insulation Resistance:1000 MΩ Min

Dielectric Withstanding Voltage:1550 V AC

Operating Temperature:-55°C To +125°C

Packing:Tray

Order Information

L-KLS1-F48-xxxxB-F S

RoHS

Series NO.

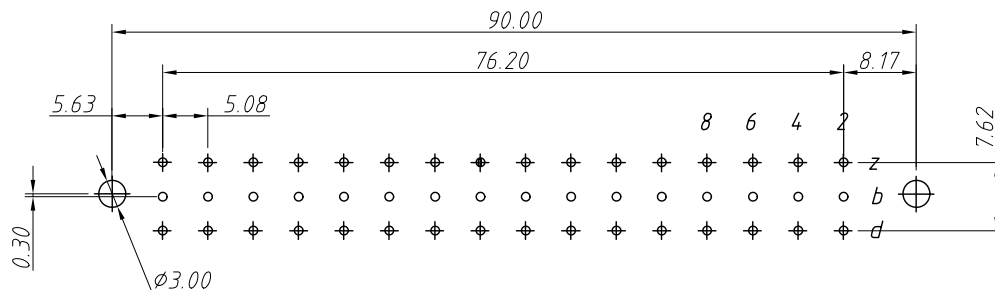
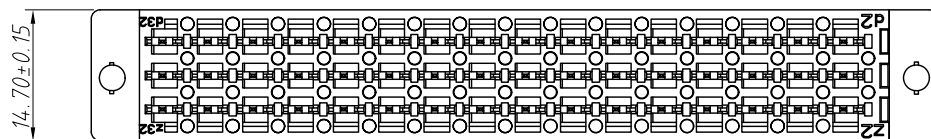
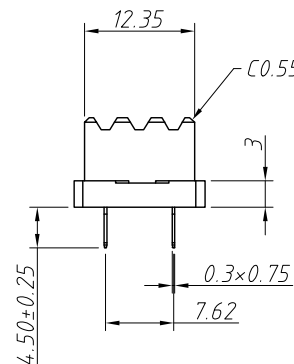
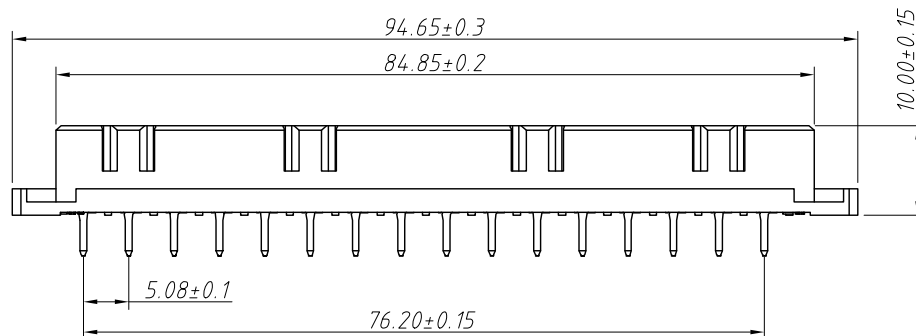
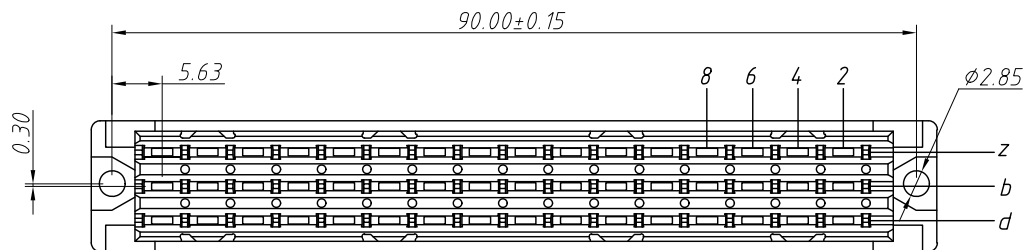
48.32.16

Part Number:

3348.3232.3116

F-Female

S-Straight Pin



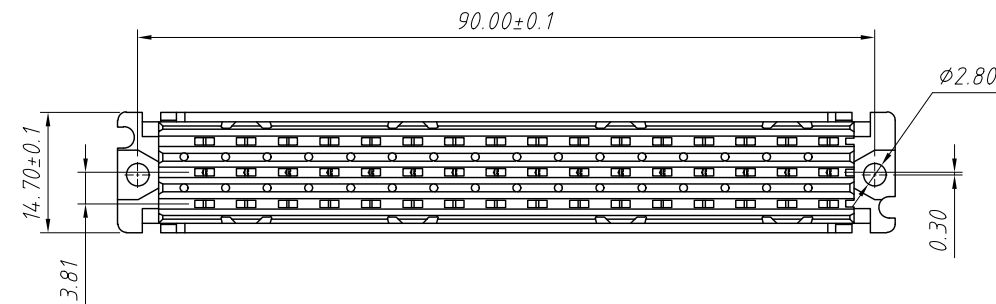
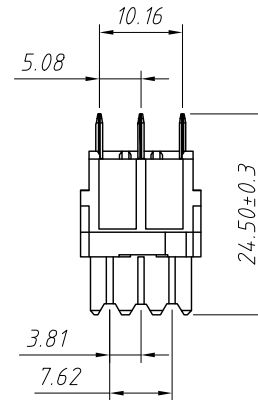
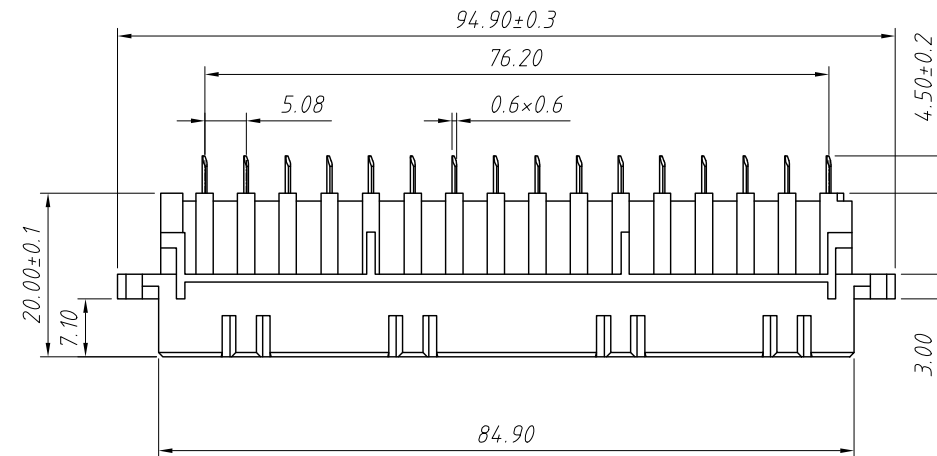
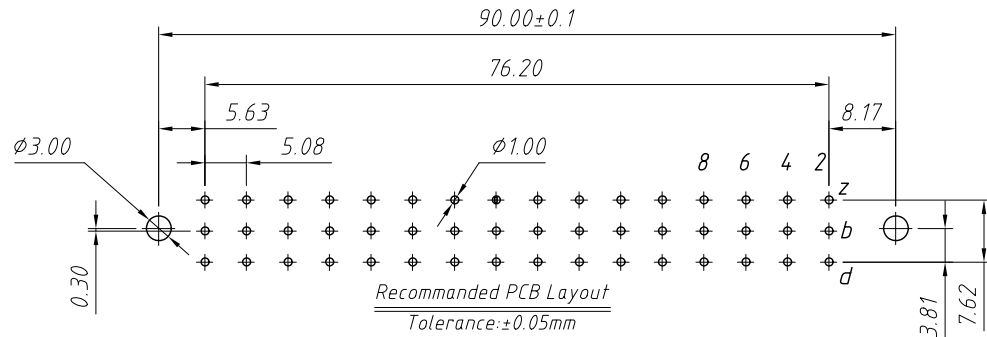
Recommended PCB Layout
Tolerance:±0.05mm

Pitch	Position	Rows with Contact	Contact Arrange	Part Number
5.08mm	48	a b c		3348
	32	a--c		3232
	16	a--		3116

ANGLE TOLERANCE	PROJECTION	Description:	Pitch5.08mm, Female, Straight Pin	
±3°				
GENERAL TOLERANCE	UNITS	mm	KLS P/N:	L-KLS1-F48-xxxxB-FS
.x ±0.30	SHEET SIZE	A4		
.xx ±0.20	Draw:	Song	2024-04-22	NingBo KLS ELECTRONIC CO.,LTD.
.xxx ±0.10	Check:	Daniel	2024-04-22	

1 RoHS Compliance

7		8		
REV	SYM	Revision Record	Appr.	Date
V0	KLS01011	New Version Release	WuHao	2026-05-25



Notes:

1.Material:

Housing:PBT+30%G.F UL 94 V-0

Contacts:Copper Alloy,Gold Flash

2.Electrical:

Current Rating:5.6Amps

Contact Resistance:15 mΩ Max

Insulation Resistance:1000 MΩ Min

Dielectric Withstanding Voltage:1550 V AC

Operating Temperature:-55°C To +125°C

Packing: Tray

Order Information

L-KLS1-F48-xxxxH-F S

RoHS

Series NO.

48.32.16

Part Number:

3348.3232.3116

F-Female

S-Straight Pin

Pitch	Position	Rows with Contact	Contact Arrange	Part Number
5.08mm	48	a b c		3348
	32	a--c		3232
	16	a--		3116

ANGLE TOLERANCE	PROJECTION	Description:	Pitch5.08mm, Female, Straight Pin
±3°			DIN41612 Connectors
GENERAL TOLERANCE	UNITS	mm	KLS P/N: L-KLS1-F48-xxxxH-FS
x.x ±0.30	SHEET SIZE	A4	NingBo KLS ELECTRONIC CO.,LTD.
x.xx ±0.20	Draw:	WuHao	
x.xxx ±0.10	Check:	Daniel	