

# Product Specification

Number: L-KLS15-RCS01-PCxxTB-A

Name: Circular connectors

Customer: \_\_\_\_\_

Date: 2025-10-31



WWW.KLSELE.COM

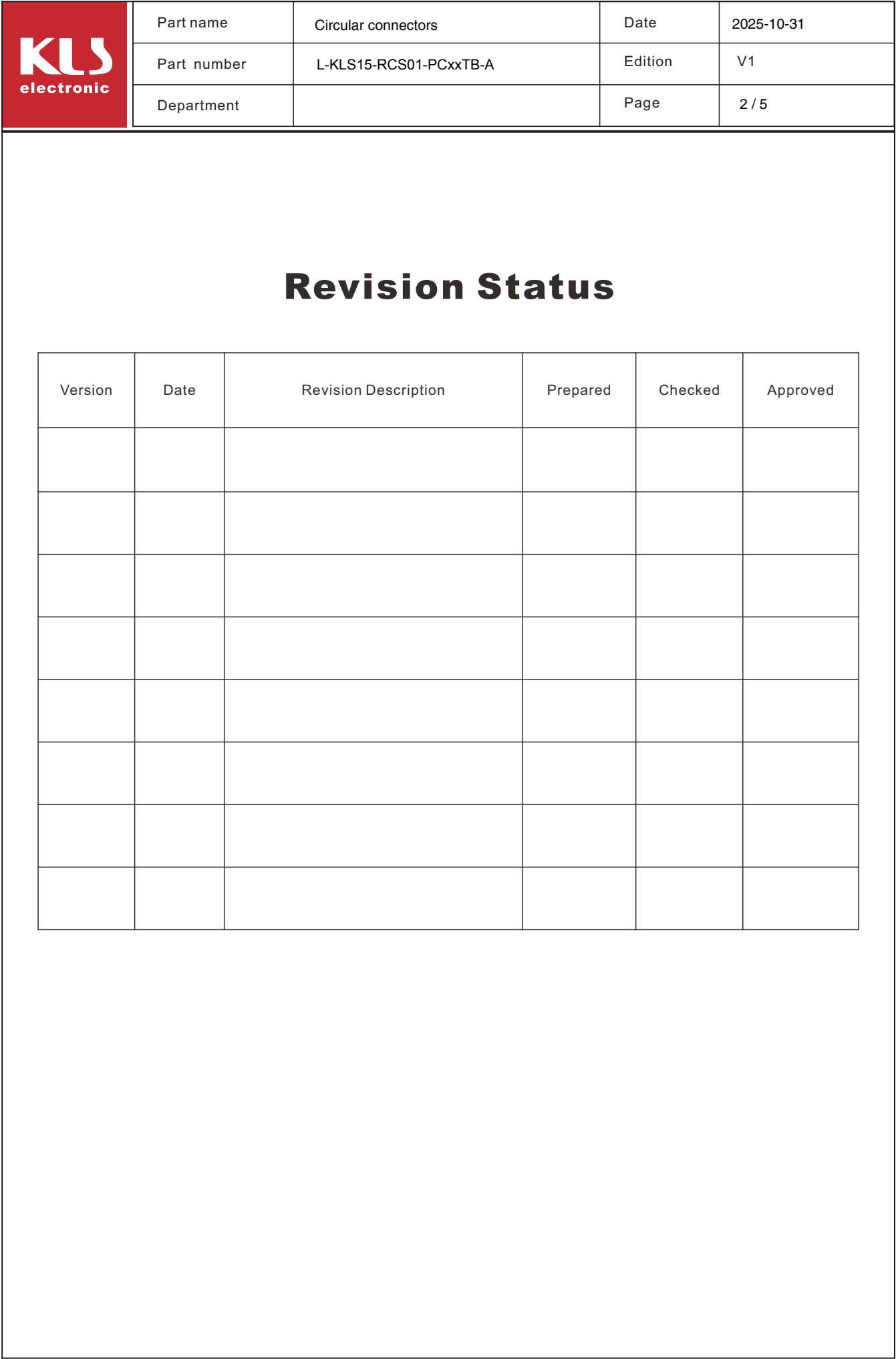
## NINGBO KLS ELECTRONIC CO; LTD

Tel : 0086-574-86828566

Fax : 0086-574-86824882

ADD : NO. 8-1, RONGXIA RD. XIAPU SHANQIAN  
INDUSTRIAL ZONE BEILUN NINGBO ZHEJIANG.

Compi	Check	Review	Approva
Jenny	Jack.C		



Part name	Circular connectors	Date	2025-10-31
Part number	L-KLS15-RCS01-PCxxTB-A	Edition	V1
Department		Page	2 / 5

## Revision Status

[illegible]

Part name	Circular connectors	Date	2025-10-31
Part number	L-KLS15-RCS01-PCxxTB-A	Edition	V1
Department		Page	3 / 5



## PC Series

The PC series is used for circuit electrical connections in radio and electrical equipment. The cable plug is connected to the socket fixed on the device through a threaded connection nut. The two devices can also be directly connected (mated) by the plugs and sockets installed on each device. It is small in size, has a light aluminum housing, reliable electrical connection, and is easy to use. It is available in sealed and non-sealed versions, and the plugs and sockets can be equipped with tail accessories respectively. The sockets are equipped with pins and the plugs are equipped with holes. Currently, there are 4, 7, 10, 19, 32, and 50 core types, which are compatible with the Russian PC-4, 7, 10, 19, 32, and 50. Color customization is available. Currently, standard gold, light gold, olive green, dark black, and silver colors are available.

Domestic model: PC

## Product Parameter

Connector type: Cable plug / Panel socket	Working voltage: 400 volts	Contact resistance: $\leq 5 \text{ m}\Omega$
Connection method: Threaded connection / Straight insertion	Working current: 5 - 40A	Insulation resistance: $> 1000 \text{ M}\Omega$
Shell material: Aluminum alloy	Insulating panel: Fiberglass / Bakelite	Insulation voltage strength: 1000 V
Contact material: Silver-plated / Gold-plated	Vibration acceleration: 5 - 2500 Hz	Mechanical life: 500 times
Pin code: 4/7/10/19/32/50	Working voltage: 200V	Tolerance temperature range: $-60^{\circ}$ - $450^{\circ}$ $-60^{\circ}$ - $200^{\circ}$

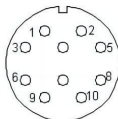
PC-4



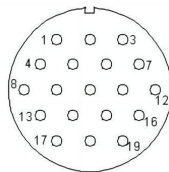
PC-7



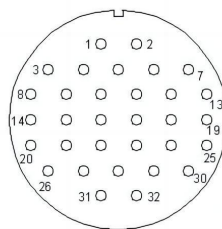
PC-10



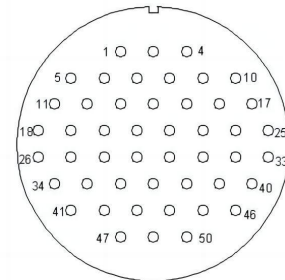
PC-19



PC-32

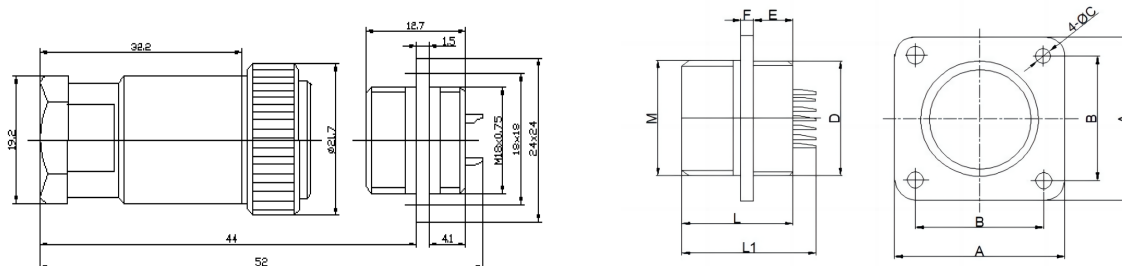


PC-50



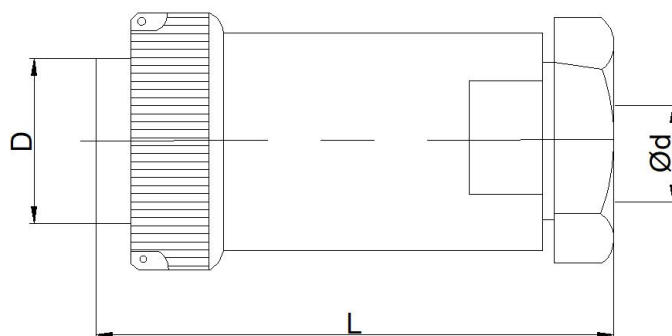
pin diameter  $\varnothing 1.0 \text{ mm}$

### complete set



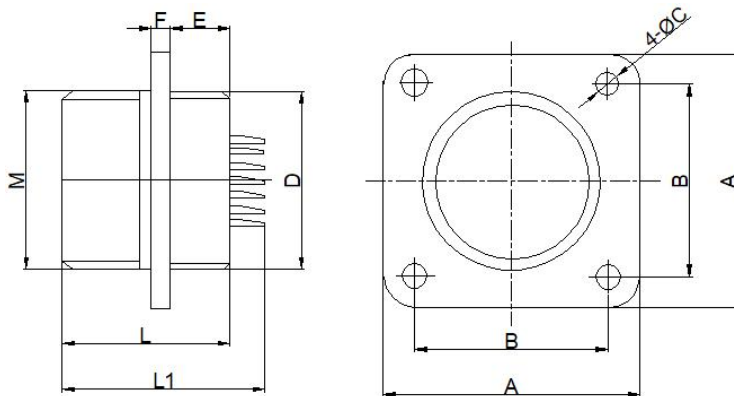
## Outline overall and installing dimensions

### Cable plug with tail connector



Specs	D	d	L
PC4	8	6	36
PC7	10	8	38
PC10	12	9	41
PC19	15.5	11	43
PC32	19.5	13	45
PC50	24	16	48

## Socket without tail plug



Specs	A	B	C	D	E	F	L	L1	M
PC4	16.5	11.8	2.2	M10×0.75	4.5	1.4	13	16	M10×0.75
PC7	18	13.2	2.2	M12×0.75	4.5	1.4	13	16	M12×0.75
PC10	20	15	2.2	M14×0.75	4.5	1.4	13	16	M14×0.75
PC19	24	18	2.2	M18×1	4.5	1.4	13	16	M18×0.75
PC32	28	21.5	2.7	M22×1/0.75	4.5	1.8	13.3	16.3	M22×0.75/1
PC50	32	26	3.2	M27×1/0.75	4.5	2.0	13	16.5	M27×0.75/1

## ORDER INFORMATION

Product NO.: KLS15-RCS01-PC4 T B - A

Pins: 4,7,10,19.....pin

Type: T-Plug (Female+Cover)  
 B-Flange Receptacle  
 F- Female Plug  
 C-Cover

Material