

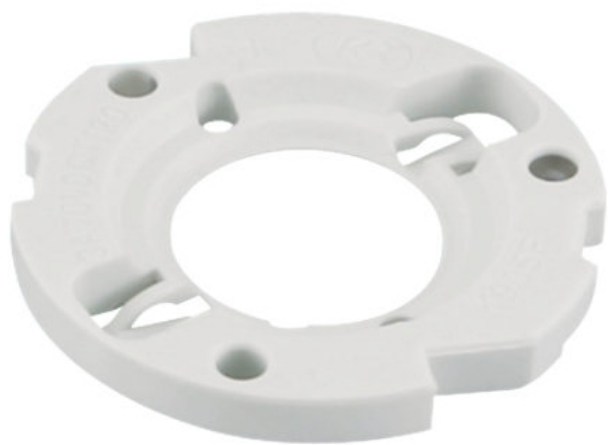
Product Specification

Number: L-KLS20-K905F

Name: LED lamp holde for COB
size 19x19mm

Customer:

Date: 2025-08-29




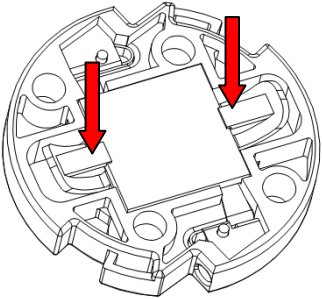
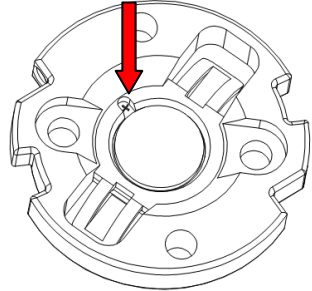
NINGBO KLS ELECTRONIC CO; LTD

Tel : 0086-574-86828566

Fax : 0086-574-86824882

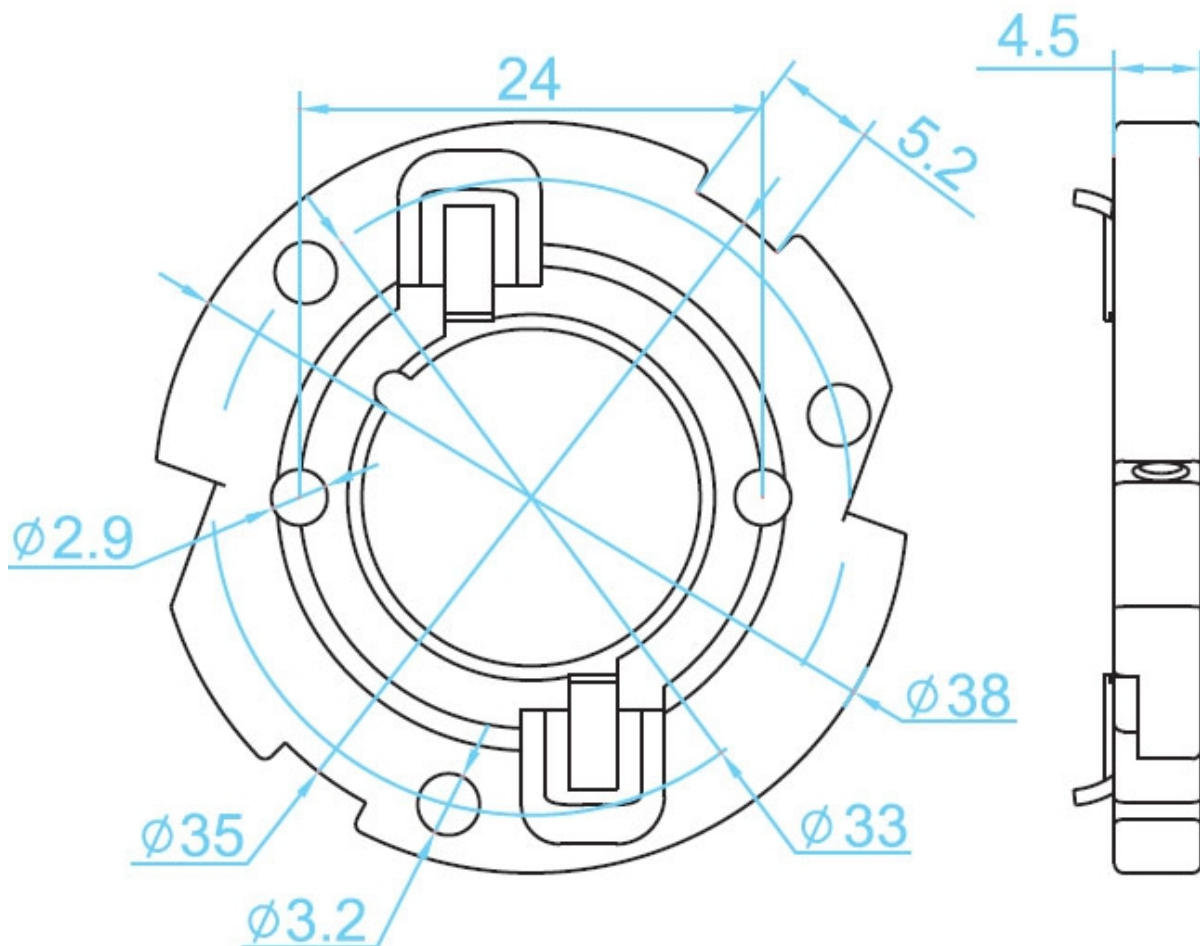
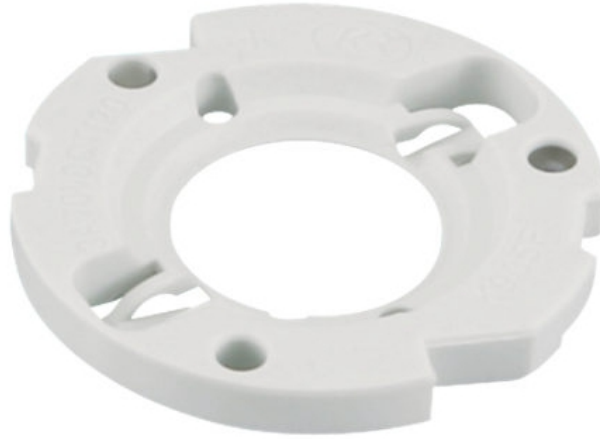
**ADD : NO. 8-1, RONGXIA RD. XIAPU SHANQIAN
INDUSTRIAL ZONE BEILUN NINGBO ZHEJIANG.**

Compi	Check	Review	Approva
Jenny	Jack.C		

	Part name	LED lamp holde for COB size 19x19mm	Date	2025-08-26
	Part number	L-KLS20-K905F	Edition	V1
	Department		Page	1/2
Product Name	LED COB Connector			
Model	L-KLS20-K905F			
Electrical Parameters	3A 70VDC T120			
Product Materials	Main Body (Insulator): White PBT Conductive Plate: Phosphor Bronze with Nickel Plating Clip: Stainless Steel			
Dielectric Strength	Between Poles:500V/0.5mA Between Poles and Outer Surface or Mounting Surface:500V/0.5mA			
Wiring Instructions	Suitable Wires:0.2-0.5mm ² Tinning at the wire end connected to the lamp holder 6mm The outer diameter of the wire must be ≤ Ø 2.0mm Wire and Lamp Holder Connection can withstand a pulling force of 2.5kg without detachment.			
Installation Method	The lamp holder is equipped with four mounting holes, as shown in the diagram. Two of these holes can be selected for installation according to the size of the heat sink. M3 screws or ST2.9 self-tapping screws are suitable for installation.			
Usage Instructions	<p>The product comes with a pre-clip for COB. During assembly, align the COB with the square slot first. Insert one side at an angle into the clip's locking point. Press the protrusion of the clip on the other side, and once the COB is fully pressed into the square slot, release the protrusion. The COB will then be secured in the slot, facilitating easy installation.</p>  <p>The product features a COB "+" sign inspection window. During inspection, if the "+" sign on the COB is not visible through the window, it indicates that the COB's positive and negative terminals are reversed and must be corrected.</p> 			

Part name	LED lamp holde for COB size 19x19mm	Date	2025-08-26
Part number	L-KLS20-K905F	Edition	V1
Department		Page	2/2

Image and Dimensions: (Unit: mm)



Packaging Instructions

Packaging Method: Bulk in plastic bags + outer carton
 Quantity per Carton: 3000PCS
 Product Unit Weight: 2.3g