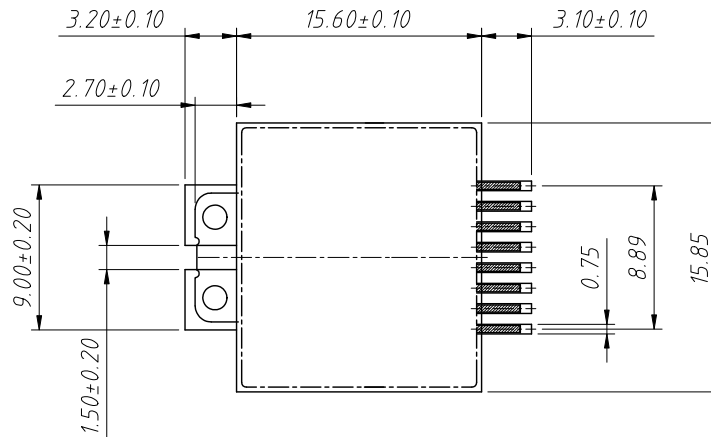
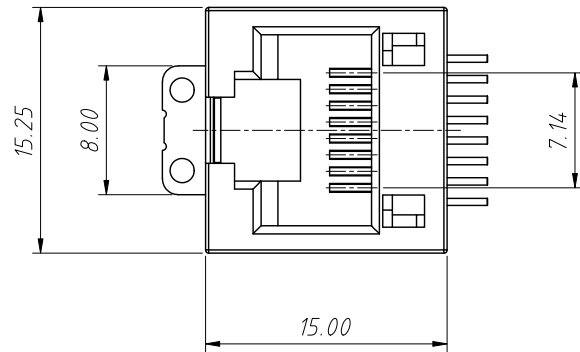
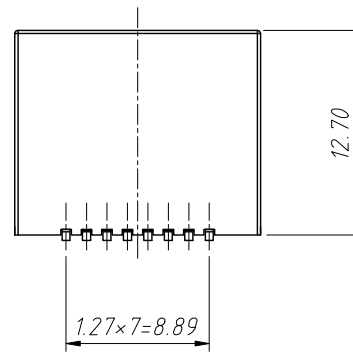
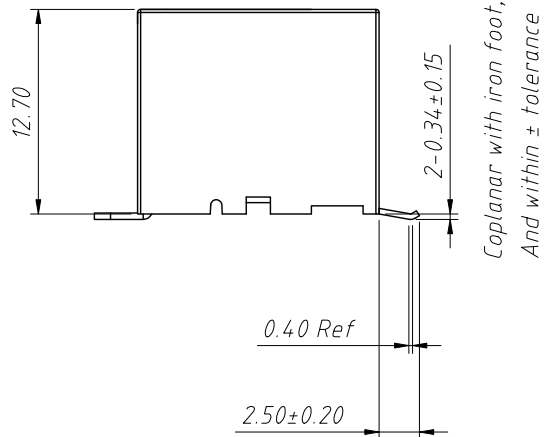


RoHS Compliance

| | | | | |
|-----|----------|---------------------|-------|------------|
| REV | SYM | Revision Record | Appr. | Date |
| V0 | KLS12003 | New Version Release | Jenny | 2025-04-25 |



PCB Layout/Top View



Electrical:

- 1.Voltage Rating:125 Vac Rms
- 2.Current Rating:1.5A
- 3.Contact Resistance:40mΩ Max.
- 4.Insulation Resistance:1000MΩ Min.@500VDC
- 5.Dielectric Strength:1000 Vac Rms 60Hz,1Min

Materials:

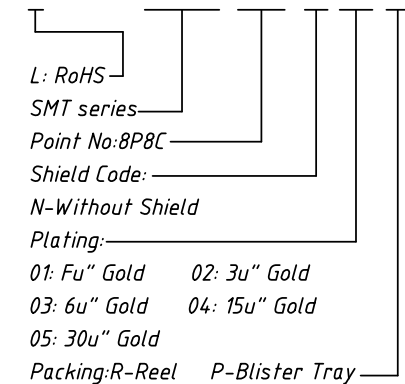
- 1.Housing:High Temp Thermoplastic Flammability, UL 94 V-0,Black.
- 2.Contact:Phosphor Bronze
- 3.Plating:Gold Plating Over Nickel In Contact
Tin Planting Over Nickel In Solder Area

Mechanical:

1. Durability:750 cycles Min.
- 2.Storage: -40°C~+85°C
- 3.Operation:-20°C~+75°C

Order Information:

L-KLS12-SMT04-8P8C-N-XX-P



| | | | |
|-------------------|--------------|--------------|---|
| ANGLE TOLERANCE | PROJECTION | Description: | RJ45-8P8C SMD Jack Vertical, Without Shell |
| ±3° | | | |
| GENERAL TOLERANCE | UNITS | mm | KLS P/N: L-KLS12-SMT04-8P8C-N-XX-P |
| x.x ±0.30 | SHEET SIZE | A4 | NingBo KLS ELECTRONIC CO.,L TD. |
| x.xx ±0.20 | Draw:Jenny | Jenny | |
| x.xxx ±0.10 | Check:Daniel | Daniel | |