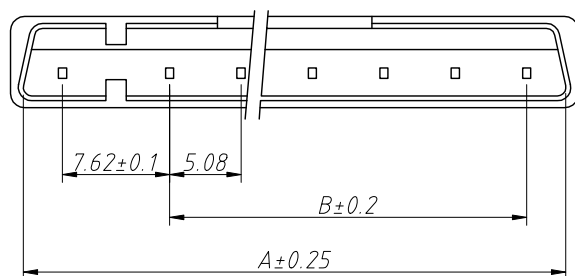
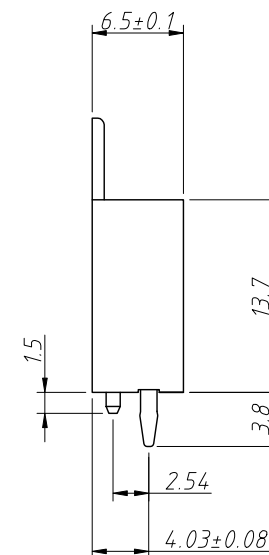
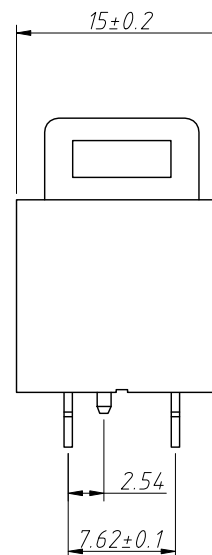
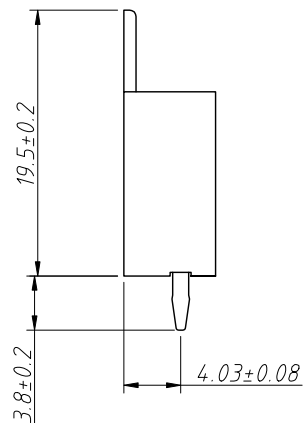
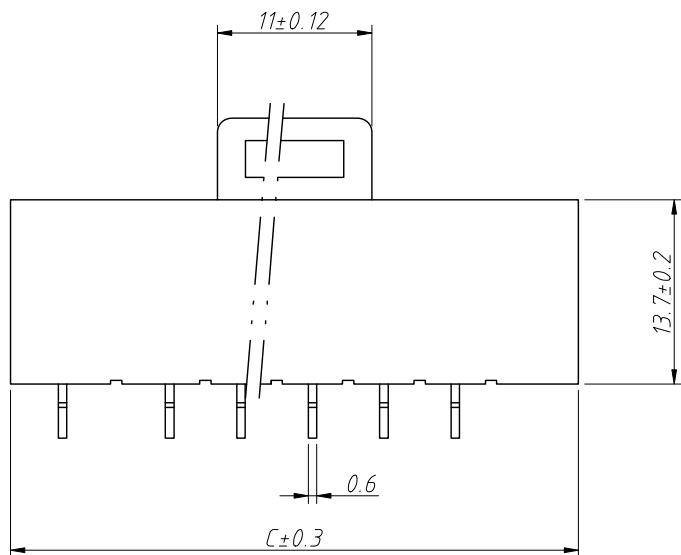
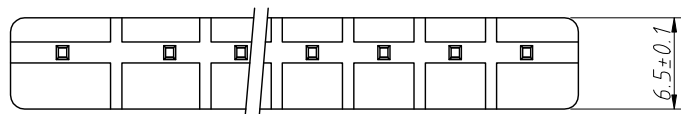


1 RoHS Compliance

REV	SYM	Revision Record	Appr.	Date
V0	KLS01109	New Version Release	Song	2025-03-28

Notes:
 1.Material:
 Housing:PA66,UL 94 V-0
 Pin :Brass

2.The surface of plastic parts shall be flat and smooth without flash, burr and other phenomena.



Circuit	Dimensions(mm)		
	A	B	C
02	13.04	0	15.0
03	18.28	5.08	20.08
04	23.36	10.16	25.16
05	28.44	15.24	30.24
06	33.52	20.32	35.32
07	38.60	25.40	40.40
08	43.68	30.48	45.48
09	48.76	35.56	50.56
10	53.84	40.64	55.64
11	58.92	45.72	60.72

2 Pin

Order Information:
 L-KLS1-MTK-7.62-03-S
 L: RoHS
 Pitch:
 No. of 02 ~ 11 pins
 S-Straight male pin

ANGLE TOLERANCE	PROJECTION	Description:	Wire To Board Connector
±3°			
GENERAL TOLERANCE	UNITS	mm	KLS P/N:
.x ±0.30	SHEET SIZE	A4	L-KLS1-MTK-7.62-XX-S
.xx ±0.20	Draw:	Song	2025-03-28
.xxx ±0.10	Check:	Daniel	2025-03-28



NingBo KLS ELECTRONIC CO.,L TD.