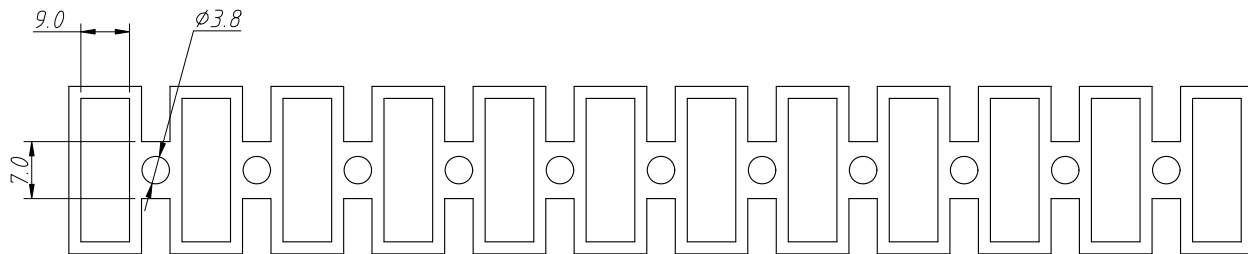
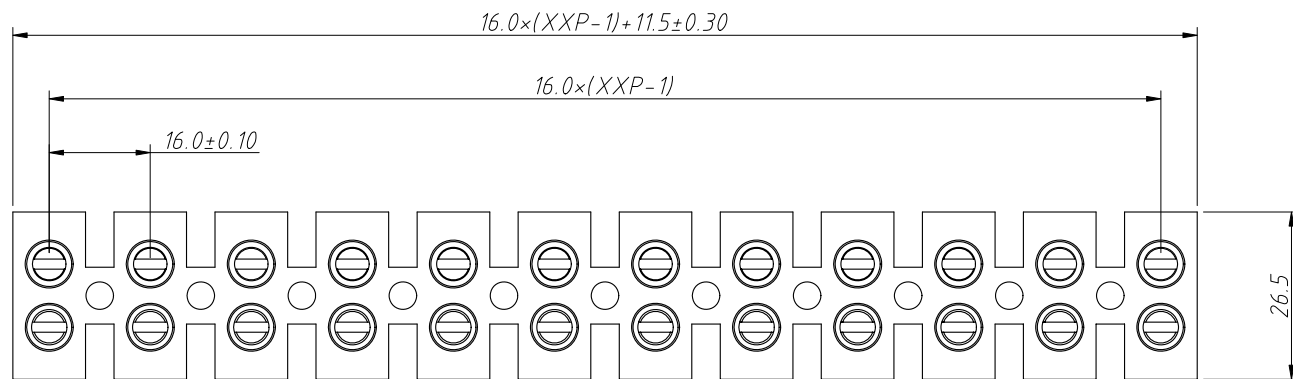
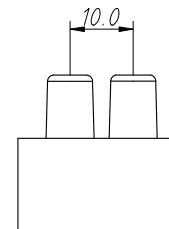
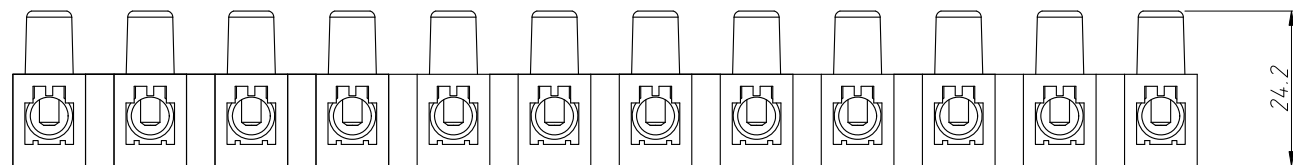


1 RoHS Compliance

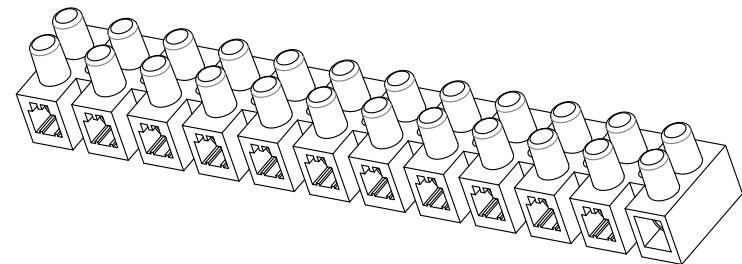
| | | | | |
|-----|----------|---------------------|-------|------------|
| REV | SYM | Revision Record | Appr. | Date |
| V0 | KLS02111 | New Version Release | Song | 2025-03-17 |



Order Information
 L-KLS2-60A-25-H-12P-W
 RoHS
 Serise NO.
 XX-No. of 02~12 Pin
 Color:W=White B=Black



Material
 Screw:M4.0,Steel,Zinc plated
 Terminal:Copper Alloy,Ni plated
 Housing: PP, UL94 V- 2,White
 Electrical
 Rated Voltage:380V
 Rated Current:60 A
 Mechanical:
 Temperature Range:-30°C ~ + 105°C



| | | | | |
|-------------------|------------|----------------------------|------------|---------------------------------|
| ANGLE TOLERANCE | PROJECTION | Description: | | |
| ±3° | | Pitch16.0mm Terminal Block | | |
| GENERAL TOLERANCE | UNITS | mm | KLS P/N: | L-KLS2-60A-25-H-XXP-X |
| .x ±0.30 | SHEET SIZE | A4 | | |
| .xx ±0.20 | Draw: | Song | 2025-03-17 | NingBo KLS ELECTRONIC CO.,L TD. |
| .xxx ±0.10 | Check: | Daniel | 2025-03-17 | |