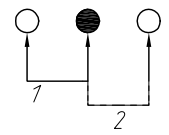
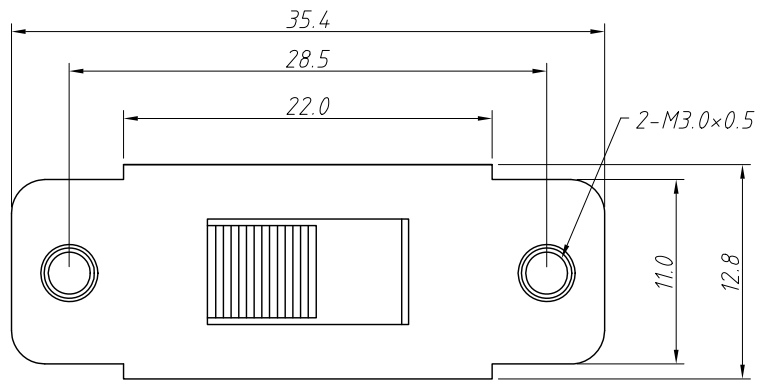


1
RoHS Compliance

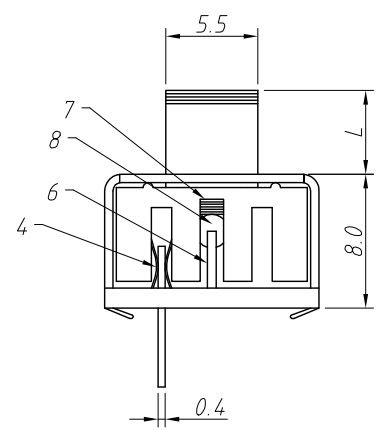
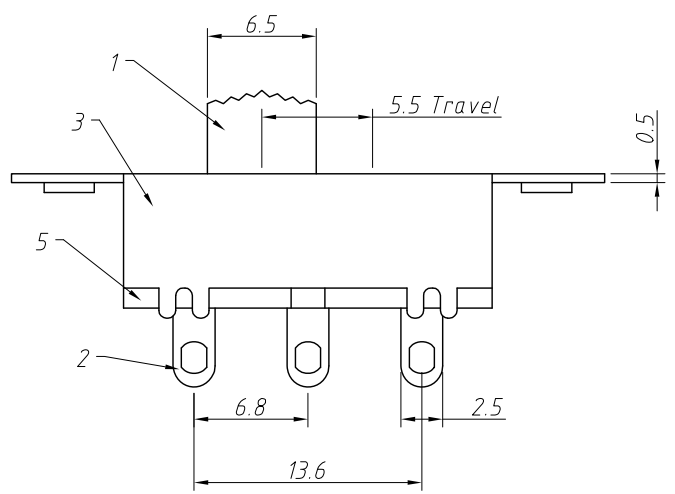
6	7	8
REV	SYM	Revision Record
V0	KLS07088	New Version Release
		Appr.
		WuHao
		Date
		2024-12-26



Schematic (Non-Shorting)

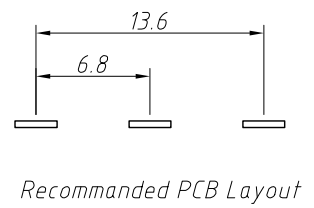
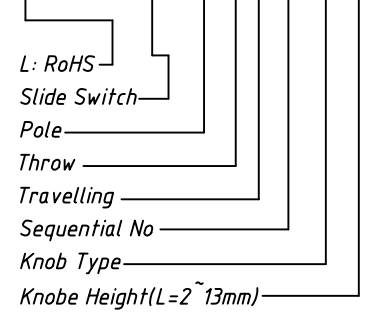
- Material:
- 1.Knob: POM Black
 - 2.Terminal:Brass Strip,Ag Plated
 - 3.Shell:Cold Rolled Steel Strip,Ni Plating
 - 4.Code Chip:Phosphorus Copper Strip,Ag Plated
 - 5.Base:Cold Stamping Plate,Natural
 - 6.Gear Plate:Cold Rolled Steel Strip,Ni Plating
 - 7.Spring:Carbon Steel Wire,Natural
 - 8.Steel Ball:Carbon Steel,Natural

- Electric:
- Rated: AC125V 1.5A
 - Contact Resistance:100 mΩ Max
 - Insulator Resistance:100 MΩ Min
 - Pressure Resistance:AC 500V
 - Operating Force:400±100 gf
 - Life:3000 Cycles
 - Post Welding:350°±10° (POM)
 - Wave Soldering:240°±5° (POM)
 - 255°±5° (PA66)



Order Information:

L-KLS7-SS38-1 2 K 29-G 5.5



Recommended PCB Layout

ANGLE TOLERANCE	PROJECTION	Description:
±3°		Slide Switches
GENERAL TOLERANCE	UNITS	mm
.x ±0.30	SHEET SIZE	A4
.xx ±0.20	Draw:	WuHao 2024-12-26
.xxx ±0.10	Check:	Daniel 2024-12-26
		KLS NingBo KLS ELECTRONIC CO.,L TD.