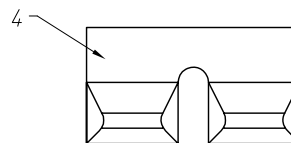
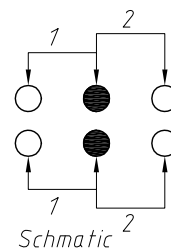
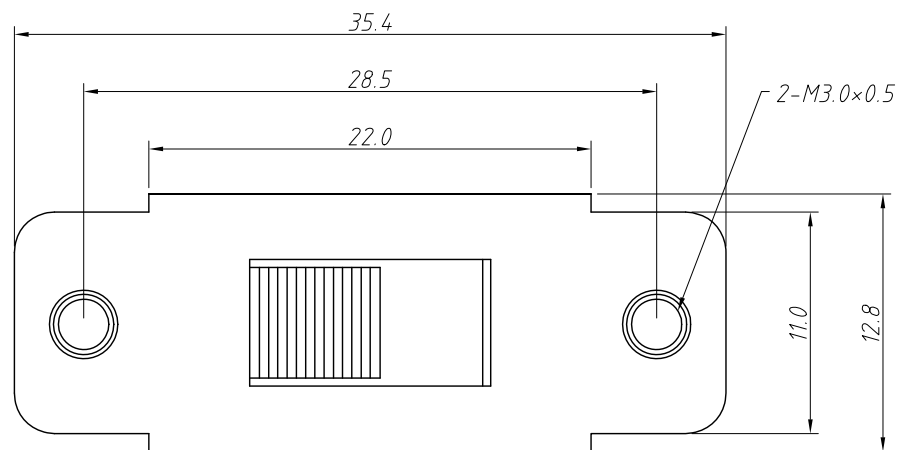


1 RoHS Compliance

6	7	8
REV	SYM	Revision Record
V0	KLS07088	New Version Release
		Appr.
		WuHao
		Date
		2024-12-24

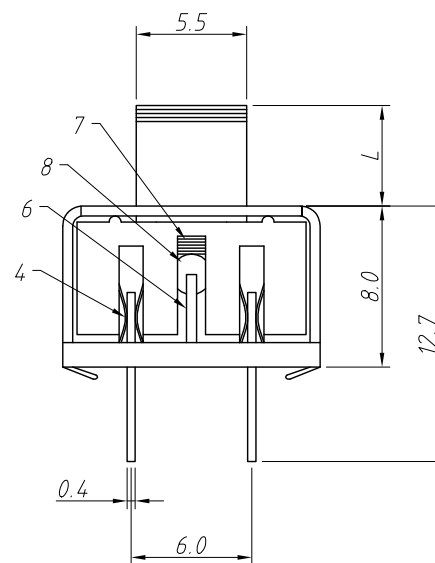
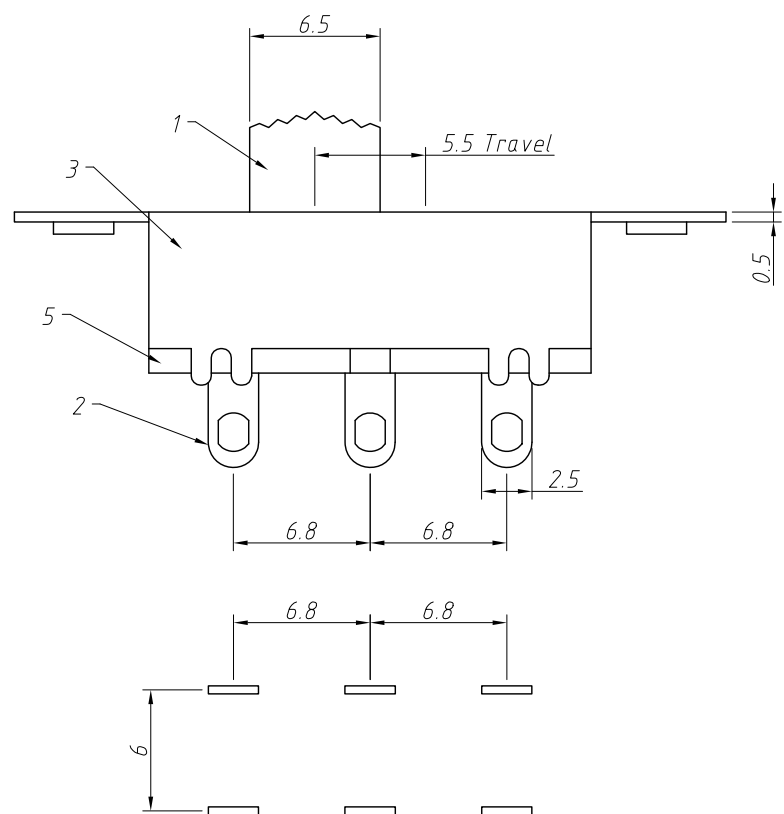


Material:

- 1.Knob: POM Black
- 2.Terminal:Brass Strip,Ag Plated
- 3.Shell:Cold Rolled Steel Strip,Ni Plating
- 4.Code Chip:Phosphorus Copper Strip,Ag Plated
- 5.Base:Insulation Board,Natural
- 6.Gear Plate:Cold Rolled Steel Strip,Ni Plating
- 7.Spring:Carbon Steel Wire,Natural
- 8.Steel Ball:Carbon Steel,Natural

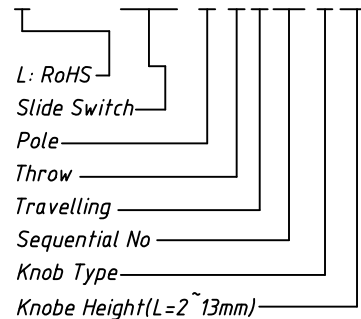
Electric:

- Rated: AC250V 1.5A
- Contact Resistance:30 mΩ Max
- Insulator Resistance:100 MΩ Min 500V DC
- Withstand Voltage: AC 500V 1 Minute
- Life:10000 Cycles
- Hand Welding:350°C± 10°C



Order Information:

L-KLS7-SS38- 2 2 K 29-G 3.0



Recommended PCB Layout

ANGLE TOLERANCE	PROJECTION	Description:
±3°		Slide Switches
GENERAL TOLERANCE	UNITS	mm
.x ±0.30	SHEET SIZE	A4
.xx ±0.20	Draw:	WuHao 2024-12-24
.xxx ±0.10	Check:	Daniel 2024-12-24
		KLS P/N: L-KLS7-SS38-22K29-GL
		NingBo KLS ELECTRONIC CO.,L TD.