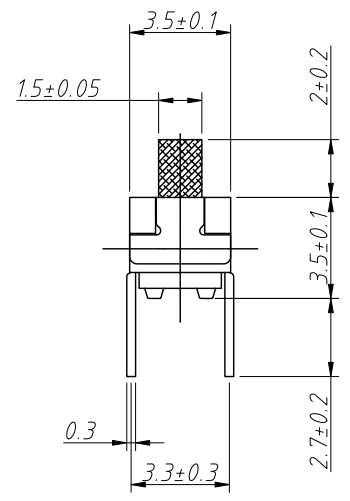
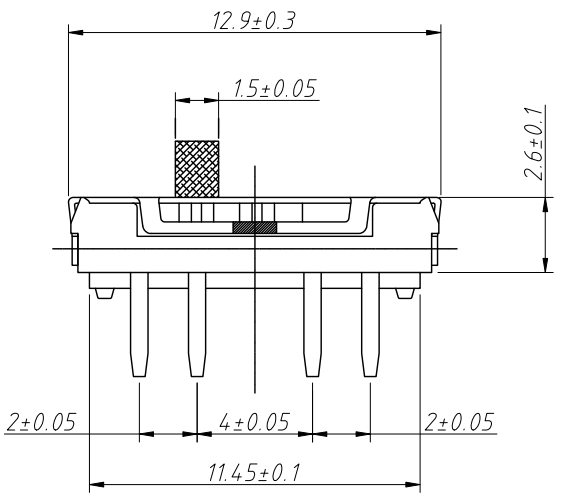


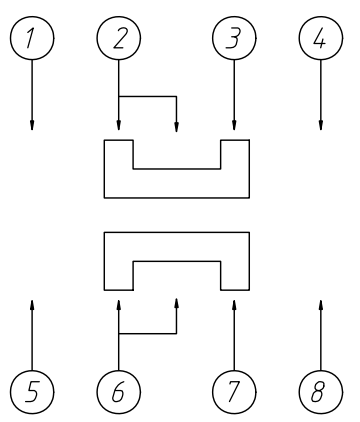
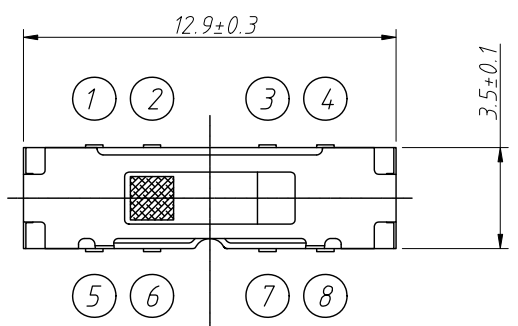
1  
RoHS Compliance

6		7		8	
REV	SYM	Revision Record		Appr.	Date
V0	KLS07088	New Version Release		Song	2025-03-27

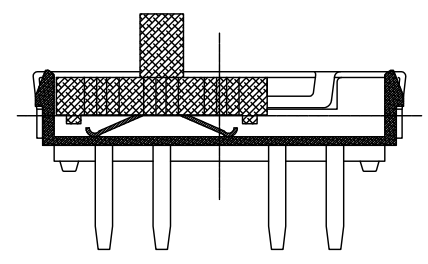


Notes:  
 1.Material:  
 Base:PPA and Brass,Black and Silver Plated  
 Button:Enhanced Nylon, Black  
 Contact spring:Compound Silver Phosphor Bronze,  
 Silver White Inlaid With Silvercover  
 Cover:Stainless Steel,Silver White

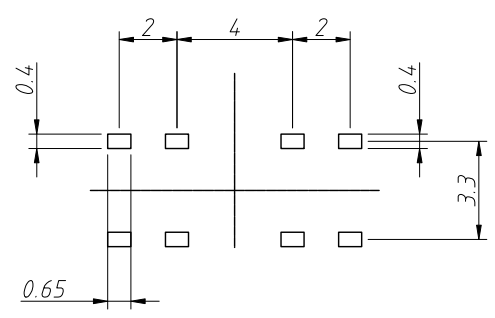
2.Electric:  
 Rated Range:50mA DC12V  
 Insulation Resistance:100MΩ Min(DC100V)  
 Compression Strength:AC100V(50/60Hz for1minute)  
 Mechanical Life:10000 Cycles  
 Operating temperature:-10°C ~ +60°C  
 Operating force:200±100gf



Circuit Diagram



Order Information  
 L-KLS7-MSS-2336-B B  
 RoHS  
 2P3T  
 STEM Color:B-Black  
 Packing:B-Bag R-Reel



PCB Layout

ANGLE TOLERANCE	PROJECTION		Description:		
±3°			Slide Switch		
GENERAL TOLERANCE	UNITS	mm	KLS P/N:	L-KLS7-MSS-2336-BX	
.x ±0.30	SHEET SIZE	A4			
.xx ±0.20	Draw:	Song	2025-03-27	NingBo KLS ELECTRONIC CO.,L TD.	
.xxx ±0.10	Check:	Daniel	2025-03-27		