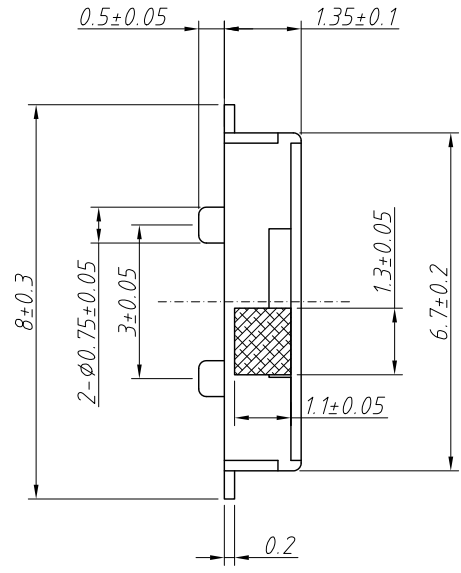
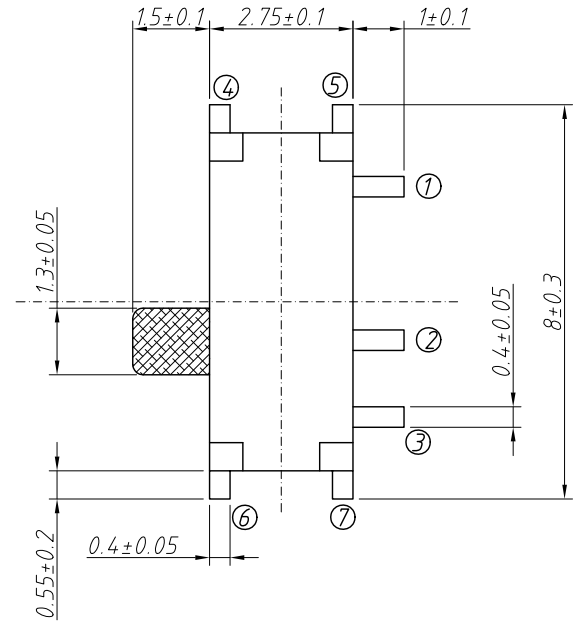


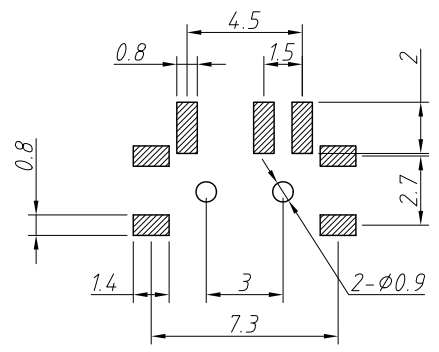
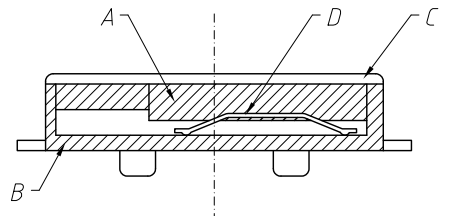
1  
RoHS Compliance

7		8	
REV	SYM	Revision Record	Appr.
V0	KLS07088	New Version Release	WuHao
			Date
			2024-12-13



Material:  
 A.Press Handle:PA46,Black  
 B.Base:Imported LCP,Black  
 Brass,Silver Plated  
 C.Lid:Brass,Silver Plated  
 D.Pin Header:Composite Silver Phosphor Bronze,Silver Plated

Electric:  
 Rated Electricity Load:DC12V 50mA  
 Insulation Resistance:100M $\Omega$  Min  
 Pressure Resistance Strength:AC250V 50Hz/1 Min  
 Electrical Life:10000 Cycles Min  
 Ambient Temperature:-25°C ~ +70°C  
 Relative Humidity:95% Max (40°C)  
 Contact Resistance:100m $\Omega$  Max  
 Operating Force:180gf±80gf

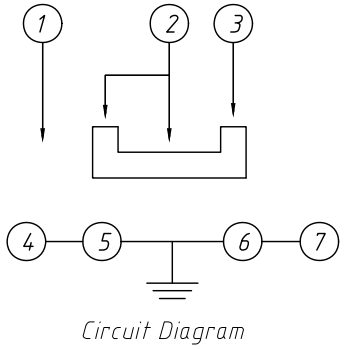


Recommended PCB Layout

Order Information:  
 L-KLS7-MSS-1290AN

```

    L: RoHS
    DPDT
    
```



ANGLE TOLERANCE	PROJECTION	Description:	
$\pm 3^\circ$		Small Sliding Switch	
GENERAL TOLERANCE	UNITS	mm	KLS P/N:
.x $\pm 0.30$	SHEET SIZE	A4	L-KLS7-MSS-1290AN
.xx $\pm 0.20$	Draw:	WuHao	2024-12-13
.xxx $\pm 0.10$	Check:	Daniel	2024-12-13

