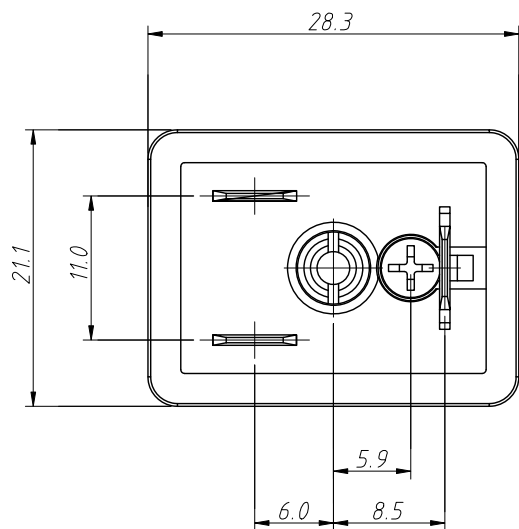
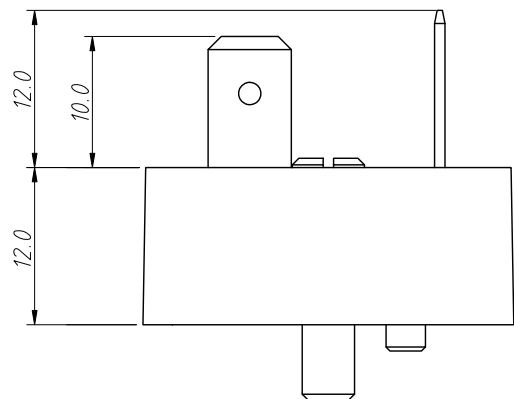


1  
RoHS Compliance



Notes:

Standard: Industrial Standard

Ambient Temperature:  $-30^{\circ}\text{C} \sim +125^{\circ}\text{C}$

Termination: Soldering

Pin Dimensions:  $6.3 \times 0.8\text{mm}$

Housing Color: Black

Housing Material: PA+GF

Contact: Brass With

Tin Plated Or Nickel Plated

Central Nut: Brass With Nickel Plated

Rated Voltage: 250V AC/DC

Rated Impulse voltage: 4000V

Rated Current: 16A

Insulation Resistance:  $\geq 100\text{M}\Omega$

Contact Resistance:  $\leq 4\text{m}\Omega$

IP Rating: IP65 in locked condition

Order Information



L-KLS15-SVCB04-2+PE

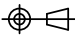
RoHS

Plug Type

Contacts

3+PE, 2+2PE, 2+PE, 3P, 4P

Contacts	2+PE
Certification	 ECBT8.E364453
Pin layout(Male)	

ANGLE TOLERANCE	PROJECTION	Description:	Solenoid Valve Valve Plug, Base Conn Type B, Rectangular
$\pm 3^{\circ}$			
GENERAL TOLERANCE	UNITS	mm	KLS P/N: L-KLS15-SVCB04-2+PE
x.x $\pm 0.30$	SHEET SIZE	A4	xx
x.xx $\pm 0.20$	Draw:	Daniel	2023-06-27
x.xxx $\pm 0.10$	Check:	Daniel	2023-06-27



NingBo KLS ELECTRONIC CO., L TD.