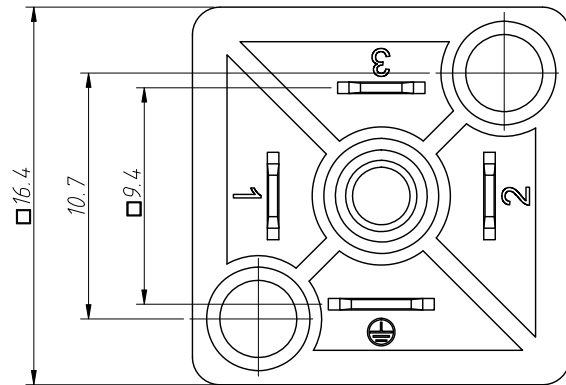
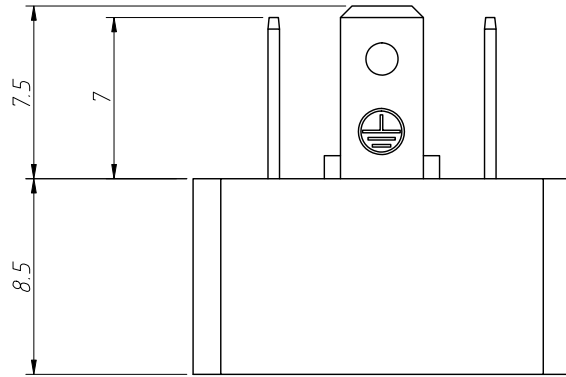


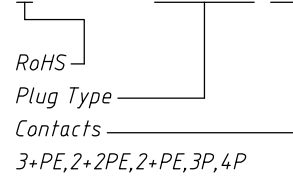
1  
RoHS Compliance



Notes:  
 Standard: Industrial Standard  
 Ambient Temperature:  $-30^{\circ}\text{C} \sim +125^{\circ}\text{C}$   
 Termination: Soldering  
 Pin Dimensions:  $4.6 \times 0.5\text{mm}$ ,  $3.8 \times 0.5\text{mm}$   
 Housing Color: Black  
 Housing Material: PA+GF  
 Contact: Brass With  
     Tin Plated Or Nickel Plated  
 Central Nut: Brass With Nickel Plated  
 Rated Voltage: 250V AC/DC  
 Rated Impulse voltage: 800V  
 Rated Current: 6A  
 Insulation Resistance:  $\geq 100\text{M}\Omega$   
 Contact Resistance:  $\leq 4\text{m}\Omega$   
 IP Rating: IP65 in locked condition

Order Information

L-KLS15-SVCB05-2+PE



Contacts	3+PE	2+2PE	2+PE
Certification	ECBT2.E364.453		
Pin layout(Male)			

ANGLE TOLERANCE	PROJECTION	Description:	Solenoid Valve Valve Plug, Base Conn Type C, Rectangular
$\pm 3^{\circ}$			
GENERAL TOLERANCE	UNITS	mm	KLS P/N: L-KLS15-SVCB05-2+PE
x.x $\pm 0.30$	SHEET SIZE	A4	xx
x.xx $\pm 0.20$	Draw:	Daniel	2023-06-27
x.xxx $\pm 0.10$	Check:	Daniel	2023-06-27

NingBo KLS ELECTRONIC CO., L TD.