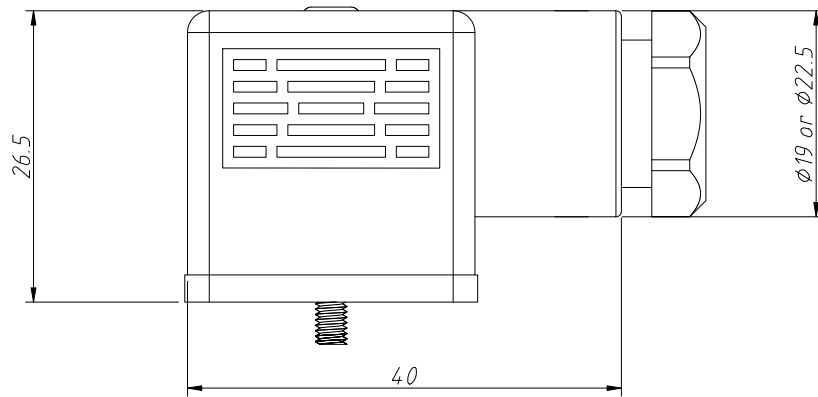
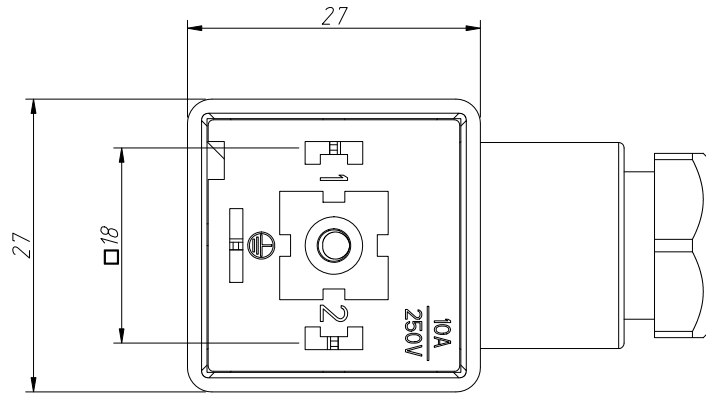


1
RoHS Compliance



Notes:

- Standard: DIN EN 175 301-803-A
- Ambient Temperature: $-30^{\circ}\text{C} \sim +125^{\circ}\text{C}$
- Termination: Screw
- Pin Dimensions: 6.3x0.8mm, 4.8x0.8mm
- Housing Color: Black
- Contact Bearer Material: PA+GF
- Housing Material: PA
- Contact: PS With Silver Plated
- Screw: Steel With Zn Plated
- Seal: FKM/NBR
- Gasket: NBR
- Rated Voltage: 250V
- Rated Impulse voltage: 4000V
- Rated Current: 10A
- Insulation Resistance: $\geq 100\text{M}\Omega$
- Contact Resistance: $\leq 4\text{m}\Omega$
- IP Rating: IP 65 in locked condition
- Cable Gland: PG9 / PG11
- Suitable Cables (Dia): 4.5 ~ 6.0mm / 6.0 ~ 9.0mm
- Conductor Size: 1.5mm² Max

Order Information

L-KLS15-SVCP01-2+PE-PG9-A

- RoHS
- Plug Type
- Contacts
- 3+PE, 2+2PE, 2+PE, 3P, 4P
- Cable Gland: PG9 or PG11
- Housing:
- A-Opaque B-Transparent

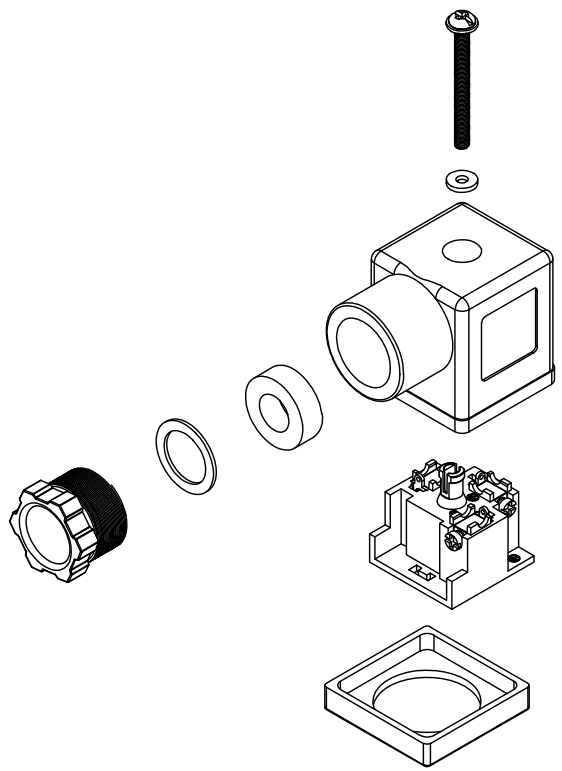
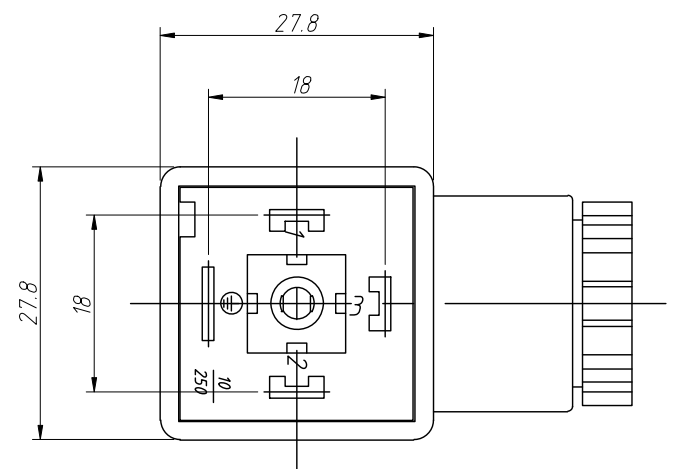
Contacts	3+PE	2+2PE	2+PE	3P	4P
Certification	ECBT2.E364453				
Pin layout (Female)					

ANGLE TOLERANCE	PROJECTION	Description:	Solenoid Valve, Valve Plug, Type A, Female Field Wirable Assembly, PG9 / PG11
$\pm 3^{\circ}$			
GENERAL TOLERANCE	UNITS	mm	KLS P/N: L-KLS15-SVCP01-2+PE-PG9-A
x.x ± 0.30	SHEET SIZE	A4	xx
x.xx ± 0.20	Draw:	Daniel	2023-06-27
x.xxx ± 0.10	Check:	Daniel	2023-06-27

NingBo KLS ELECTRONIC CO., L TD.

1
RoHS Compliance

2		3		4		5		6		7		8	
REV	SYM	Revision Record		Appr.	Date								
V0	KLS01667	New Version Release		Song	2024-10-09								



- Notes:
- Contact Material: CuZn
 - Maximum Current: 10A
 - Working Voltage: 250V AC/DC
 - Cross-Sectional Area Of Wire: 1.5mm² Max
 - Insulation Type: C-VDE 0110
 - Working Temperature: -40°C ~ +120°C
 - Lock Wire Range: 8 ~ 10mm
 - Executive Standard: EN175301-803A
 - Fixing Screw Torque: 0.3N/m Max

Order Information

L-KLS15-SVCP01-3+PE-PG9-A

RoHS _____

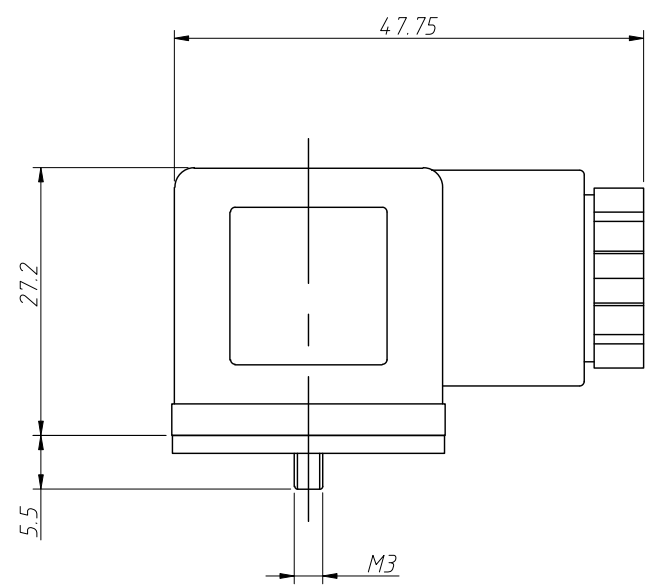
Plug Type _____

Contacts _____

3+PE, 2+2PE, 2+PE, 3P, 4P

Cable Gland: PG9 _____

Housing: A-Opaque _____



Contacts	3+PE	2+2PE	2+PE	3P	4P
Certification	c us EN175301-803A				
Pin layout(Female)					

ANGLE TOLERANCE	PROJECTION	Description:			
±3°		Power Waterproof Connector			
GENERAL TOLERANCE	UNITS	mm	KLS P/N:	L-KLS15-SVCP01-X+XX-PG9-A	
.x ±0.30	SHEET SIZE	A4			
.xx ±0.20	Draw:	Song	2024-10-09	NingBo KLS ELECTRONIC CO.,L TD.	
.xxx ±0.10	Check:	Daniel	2024-10-09		