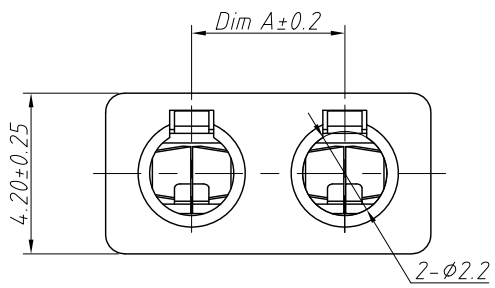


1
RoHS Compliance

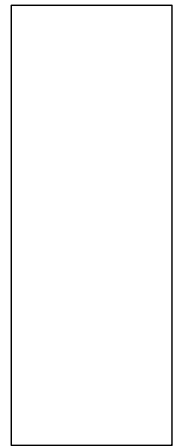
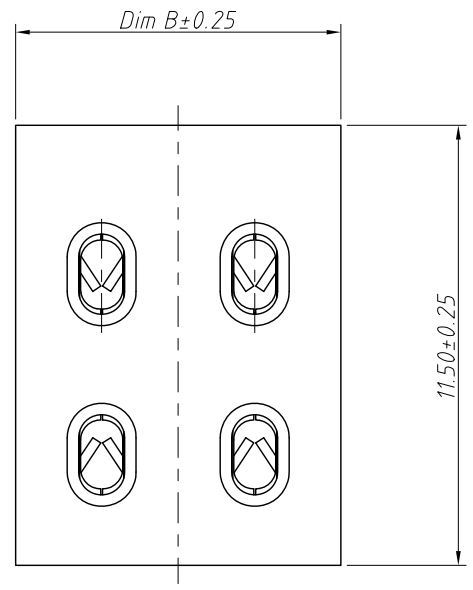
6	7	8
REV	SYM	Revision Record
V0	KLS02056	New Version Release
		Appr.
		WuHao
		Date
		2024-11-26



Pin	Dim A	Dim b
01	---	4.50
02	4.00	8.50
03	8.00	12.50

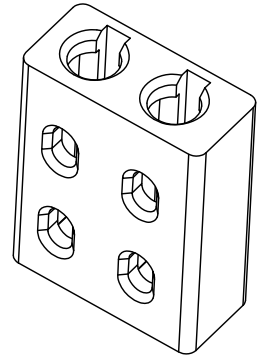
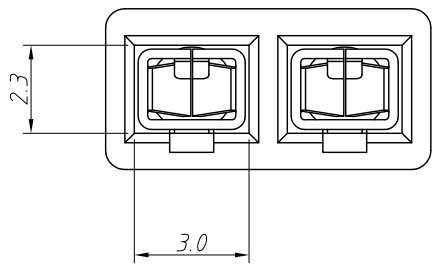
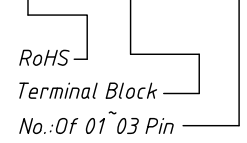
Material:
Housing: PA46, UL 94V-0, Belge
Contacts: Phosphor Bronze, Sn-Plated

Electric:
Contact Resistance: 20mΩ Max
Insulation Resistance: 1000MΩ Min
Rated Voltage: 275V AC DC
Rated Current: 1.0A AC DC
Withstanding Voltage: 1000V AC/minute
Temperature Range: -40°C ~ +110°C
Wire Range: 24 ~ 22 AWG

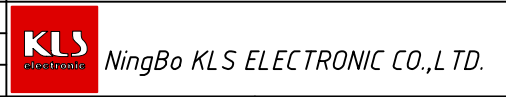


Order Information

L-KLS2-L128-XX



ANGLE TOLERANCE	PROJECTION	Description:	
±3°			Poke-in connectors
GENERAL TOLERANCE	UNITS	mm	KLS P/N: L-KLS2-L128-XX
x. ±0.50	SHEET SIZE	A4	
.x ±0.30	Draw:	WuHao	2024-11-26
.xx ±0.20	Check:	Daniel	2024-11-26



A
B
C
D
E
F
G
H

A
B
C
D
E
F
G
H

1 2 3 4 5 6 7 8