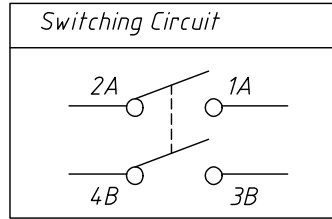
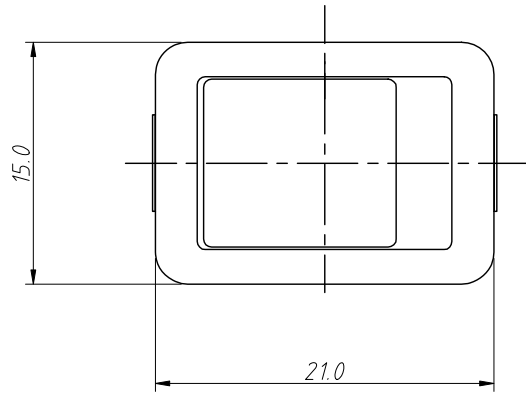


1 RoHS Compliance

| | | | | |
|-----|----------|---------------------|-------|------------|
| 6 | 7 | 8 | | |
| REV | SYM | Revision Record | Appr. | Date |
| V0 | KLS07200 | New Version Release | Song | 2024-12-20 |



Electric:

Rating: 12(4)A 125/250V ~ T125/55(cURus/ENEC15)

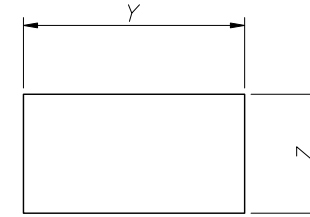
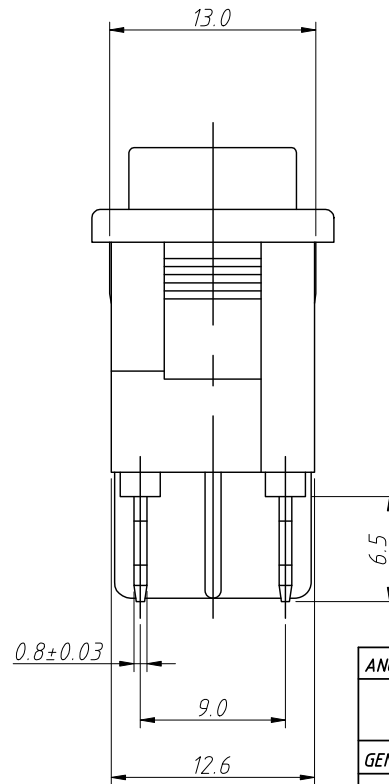
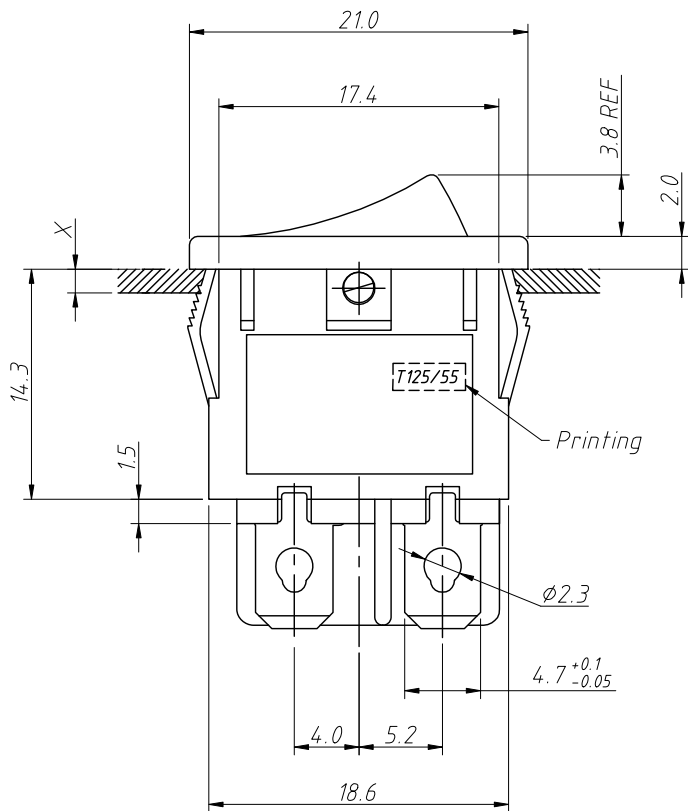
10(4)A 250V ~ T125/55(CQC)

Dielectric Withstand Voltage: 1500VAC For 1Minute

Insulation Resistance: DC500V 100M Ω (Min)

Contact Resistance: 20m Ω Initial(Max)

Unmark Tolerances ± 0.3



Mounting Hole

Panel Cutout Dimension Table:

| X(PANEL THICKNESS) | Y(CUTOUT DIMENSION) | Z(CUTOUT DIMENSION) |
|--------------------|------------------------------------|-------------------------------------|
| 0.75 ~ 1.25mm | 19.2 ^{+0.1} ₋₀ | 12.9 ^{+0.15} ₋₀ |
| 1.25 ~ 2mm | 19.4 ^{+0.1} ₋₀ | 12.9 ^{+0.15} ₋₀ |
| 2 ~ 3mm | 19.8 ^{+0.1} ₋₀ | 12.9 ^{+0.15} ₋₀ |

| | | | | |
|-------------------|------------|--------------|---------------|--------------------------------|
| ANGLE TOLERANCE | PROJECTION | Description: | Rocker Switch | |
| $\pm 3^\circ$ | | | | |
| GENERAL TOLERANCE | UNITS | mm | KLS P/N: | L-KLS7-050-10101BB |
| .x ± 0.30 | SHEET SIZE | A4 | | |
| .xx ± 0.20 | Draw: | Song | 2024-12-20 | NingBo KLS ELECTRONIC CO.,LTD. |
| .xxx ± 0.10 | Check: | Daniel | 2024-12-20 | |