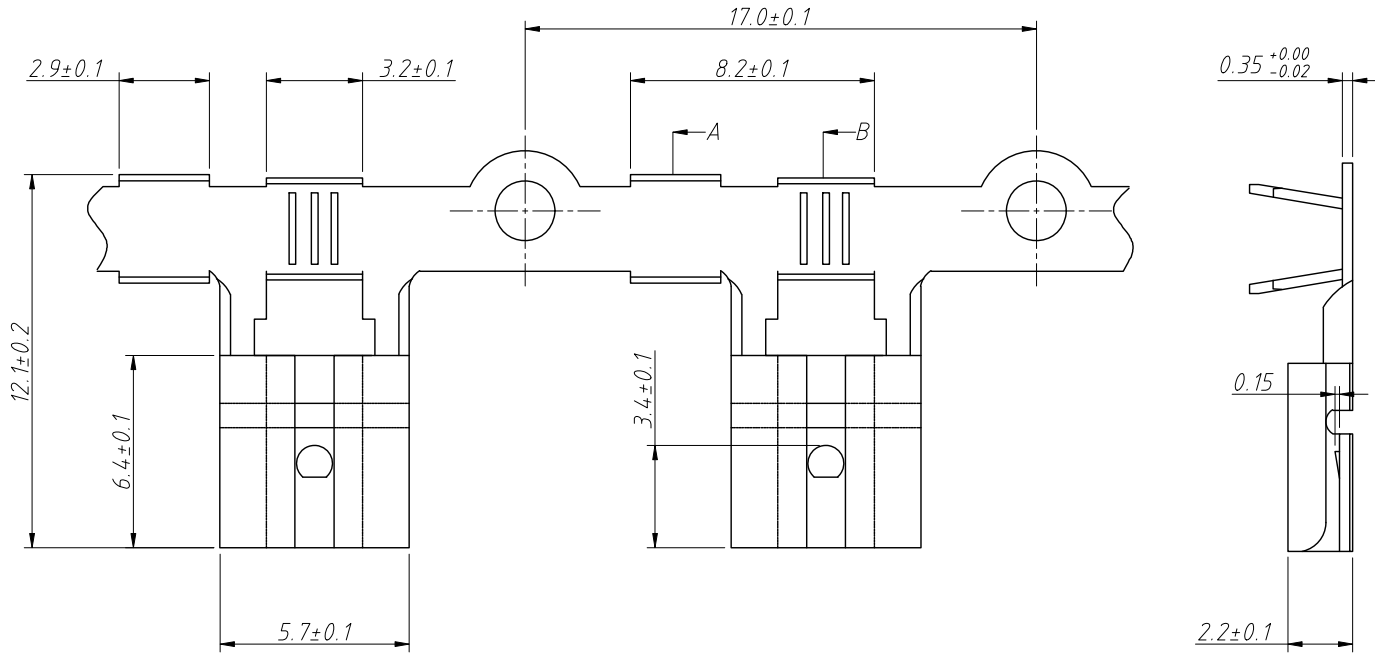


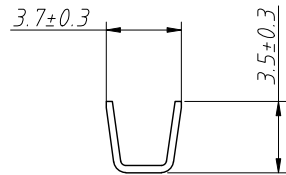
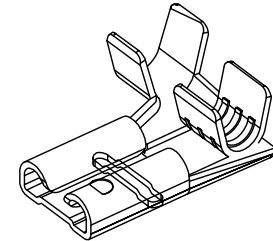
RoHS Compliance

REV	SYM	Revision Record	Appr.	Date
V0	KLS01642	New Version Release	Song	2025-03-14

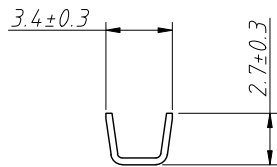


Notes:

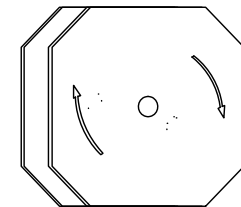
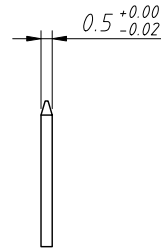
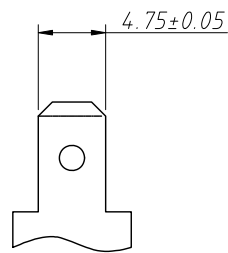
1. Material: Brass C2680, Tin Plated
2. Applicable Wires: 16-22AWG
3. Packing: 5000PCS/Reel
4. The surface of the product must not have oxidation, rust, crushing, deformation, rupture, or other phenomena
5. The burrs on the product shall not exceed 0.05mm, and the height of the product's wire feet shall not exceed 0.1mm
6. The insertion force of the material is 1.5-2.5kg, and the extraction force is greater than or equal to 3.0kg.
7. The insertion force of electroplating is 2.0-3.5kg, and the extraction force is greater than or equal to 3.0kg.



SECTION A-A



SECTION B-B



ANGLE TOLERANCE	PROJECTION	Description:	Cold-pressed Terminal	
±3°				
GENERAL TOLERANCE	UNITS	mm	KLS P/N:	L-KLS8-BFR05-1870501
.x ±0.30	SHEET SIZE	A4		
.xx ±0.20	Draw:	Song	2025-03-14	NingBo KLS ELECTRONIC CO.,L TD.
.xxx ±0.10	Check:	Daniel	2025-03-14	