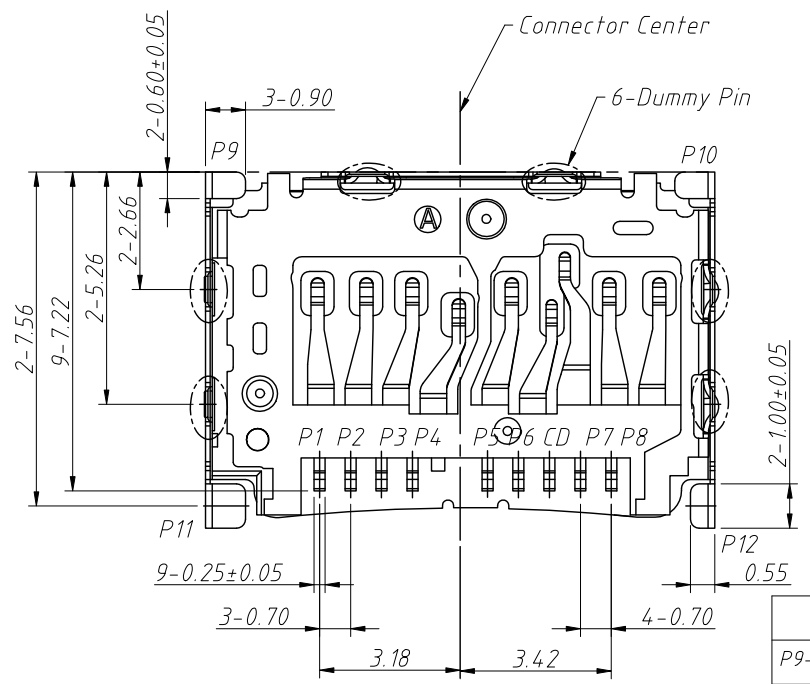
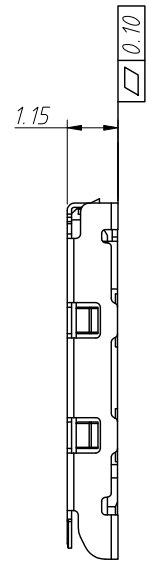
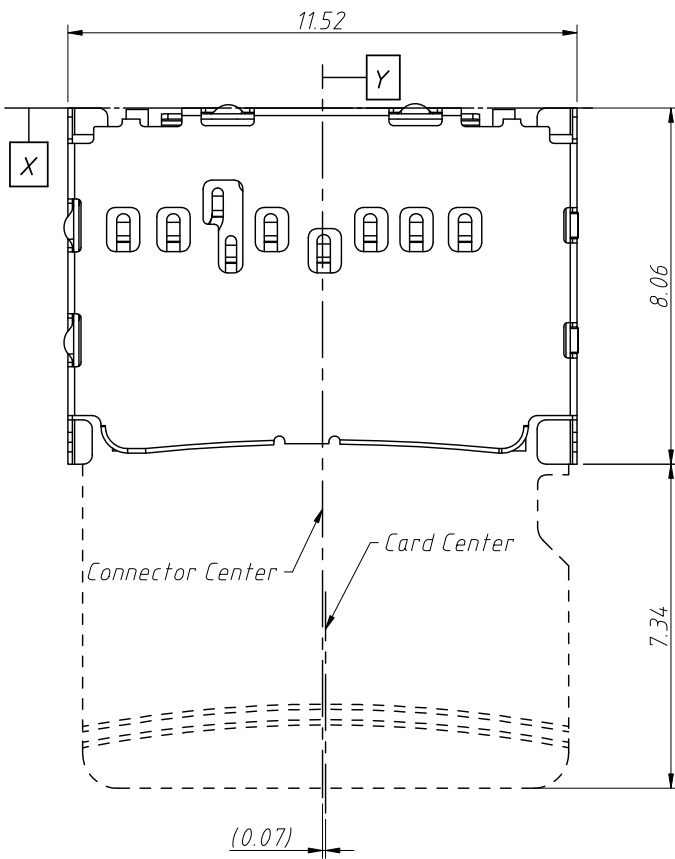
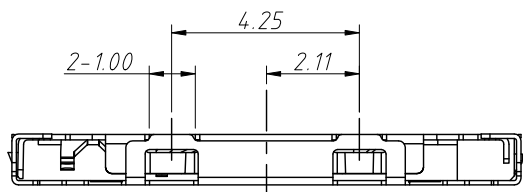


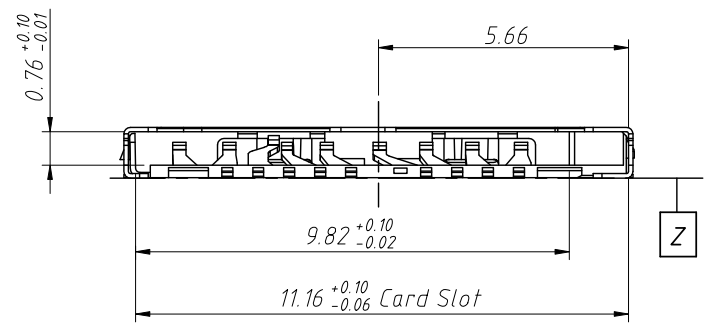
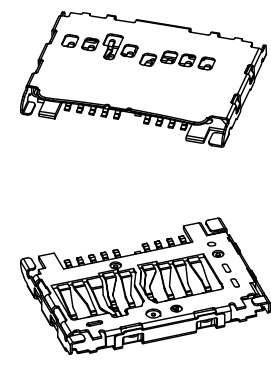
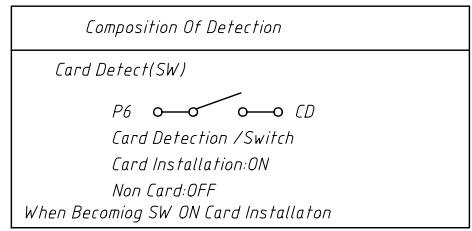
1  
RoHS Compliance

REV	SYM	Revision Record	Appr.	Date
V0	KLS01612	New Version Release	Song	2025-01-09



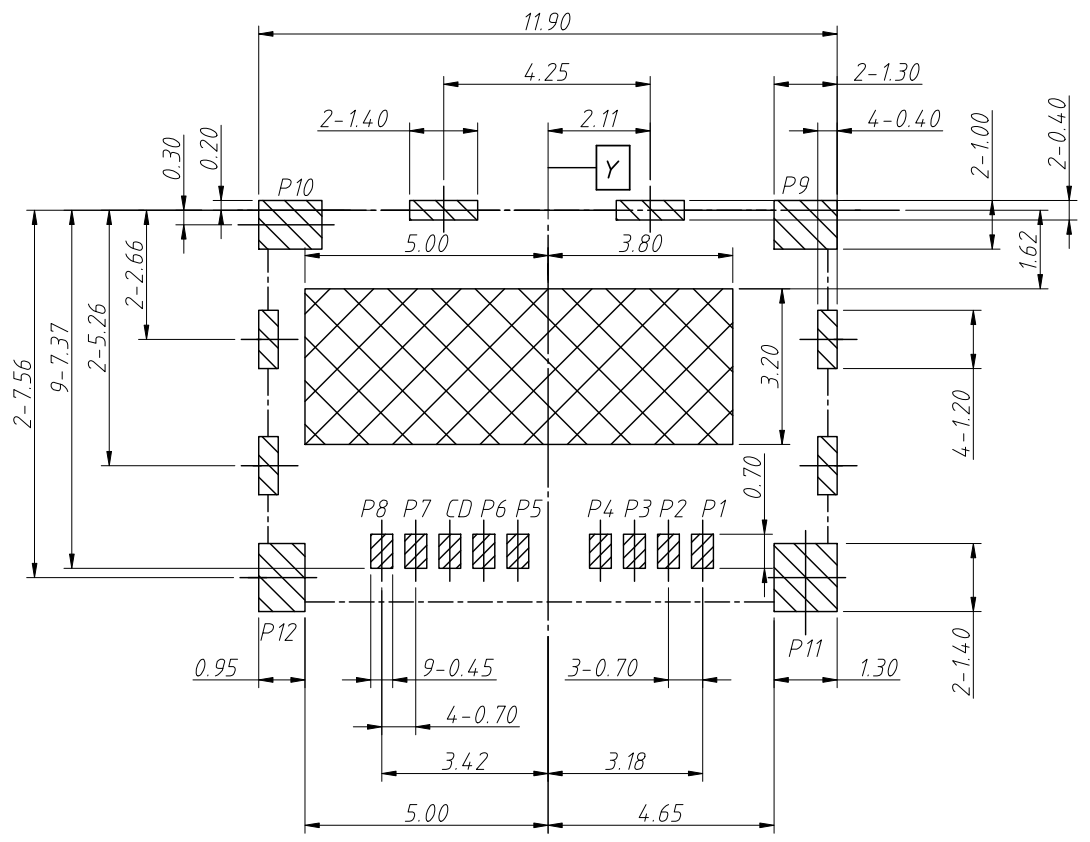
Recommended PCB Layout  
Tolerance: ±0.05mm

Pin Define	
P9-P12	GND
P8	DAT1
P7	DAT0
CD	Card Detect
P6	VSS
P5	CLK
P4	VDD
P3	CMD
P2	CD/Dat3
P1	Dat2



ANGLE TOLERANCE	PROJECTION	Description:	Micro SD Card Connectors	
±2°			L-KLS1-SD116-H1.15-R	
GENERAL TOLERANCE	UNITS	mm	KLS P/N:	
.x ±0.35	SHEET SIZE	A4	1 Of 4	
.xx ±0.20	Draw:	Song	2025-01-09	
.xxx ±0.10	Check:	Daniel	2025-01-09	

NingBo KLS ELECTRONIC CO.,L.TD.



Recommended PCB Layout  
Tolerance: ±0.05mm

- PAD AREA
- KEEP OUT AREA
- NO COPPER AREA
- GND PATTERN AREA

Notes:

1.Material:  
 Insulator: High Temperature Thermoplastic (LCP, 475), UL 94 V-0, Black  
 Contact: Phosphor Bronze (C5210R-SH, T=0.12)  
 Cover: SUS304-H, T=0.10

2.Plating  
 Contact: Contact Area: Gold 2u" Min. Middle Pd-Ni 8u" min.  
 Solder Area: Gold 1u" Min  
 Underplating: Ni Overall 80u" Min.  
 Cover: Underplating: Ni Overall 30u" Min.  
 Solder Area: Gold 1u" Min.

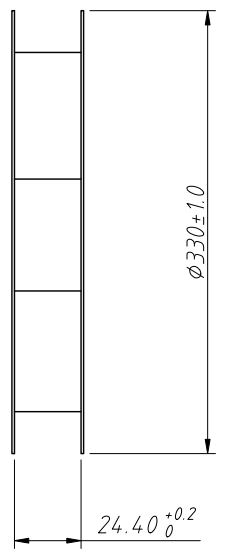
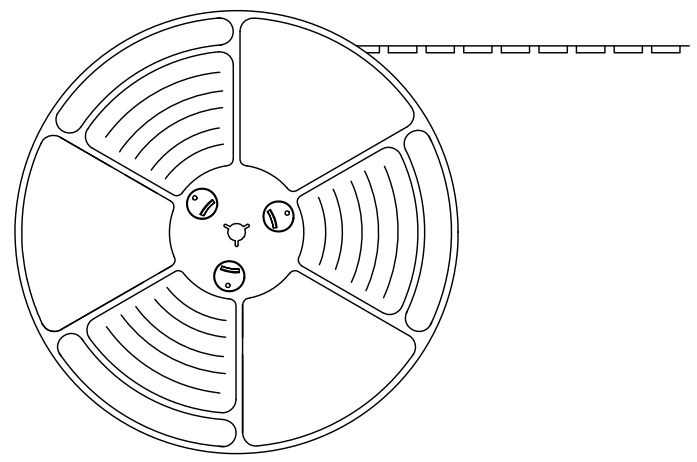
3.Electric:  
 Contact Current Rating: 0.5 Amperes  
 Dielectric Withstanding Voltage: AC 500V r.m.s.  
 Insulation Resistance: 1000 Megohms Minimum At DC 500V  
 Contact Resistance: 100 mΩ Maximum  
 Mating Cycles: 5000 Cycles  
 Operating Temperature: -25°C ~ +85°C

4.Recommending A Metal More Than 0.15mm Thick,  
 Please Confirm Solderability, If Use A Metal Mask  
 Less Than 0.15mm Thick

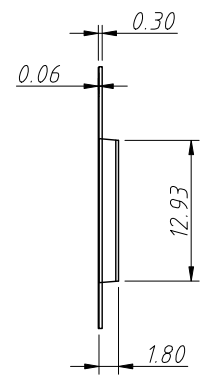
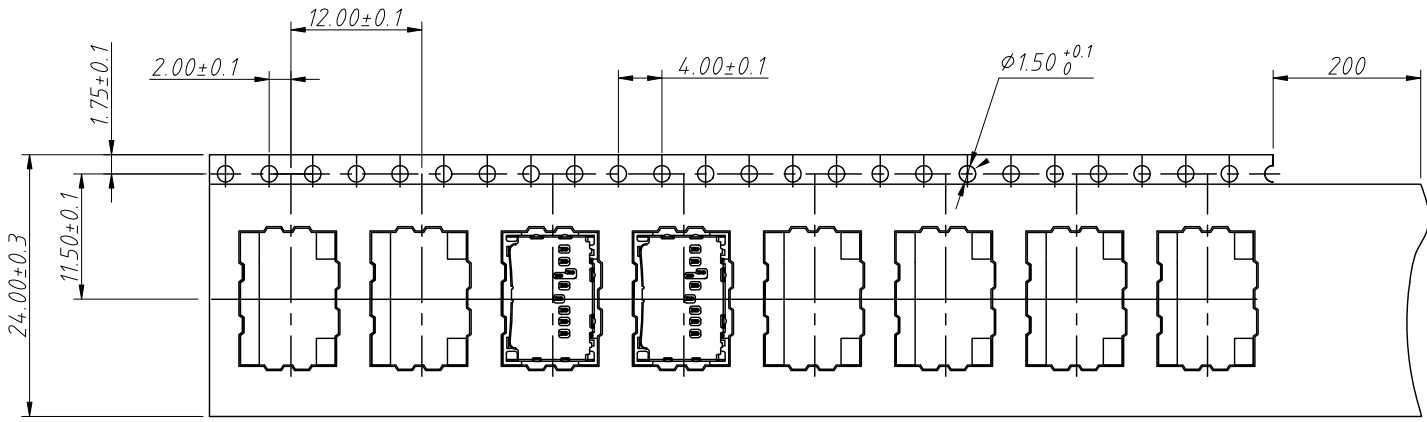
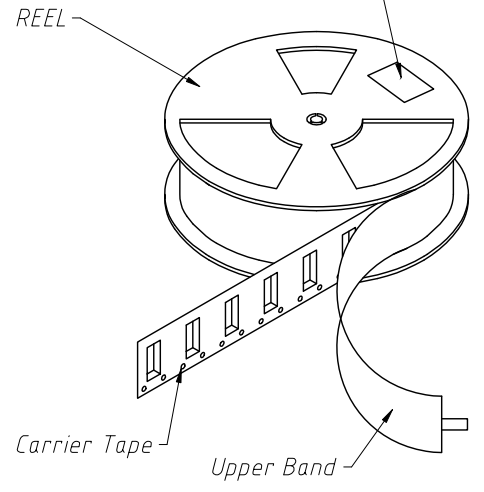
ANGLE TOLERANCE	PROJECTION	Description:	Micro SD Card Connectors	
±2°				
GENERAL TOLERANCE	UNITS	mm	KLS P/N:	L-KLS1-SD116-H1.15-R
.x ±0.35	SHEET SIZE	A4	2 Of 4	
.xx ±0.20	Draw:	Song	2025-01-09	NingBo KLS ELECTRONIC CO.,LTD.
.xxx ±0.10	Check:	Daniel	2025-01-09	

1  
RoHS Compliance

6	7	8
REV	SYM	Revision Record
V0	KLS01612	New Version Release
Appr.	Song	Date
		2025-01-09



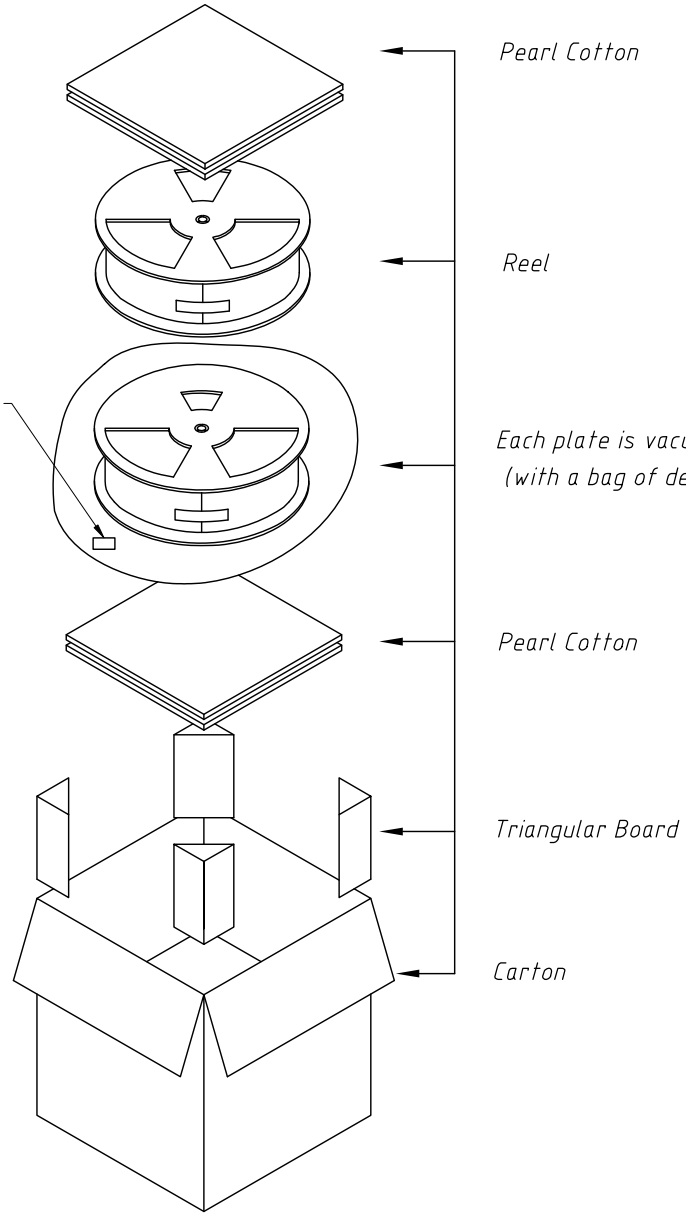
Label pasting location (facing the non perforated side of the roll packaging material)



ANGLE TOLERANCE	PROJECTION	Description:
$\pm 2^\circ$		Micro SD Card Connectors
GENERAL TOLERANCE	UNITS	KLS P/N:
.x $\pm 0.35$	mm	L-KLS1-SD116-H1.15-R
.xx $\pm 0.20$	SHEET SIZE	3 Of 4
.xxx $\pm 0.10$	Draw:	Song 2025-01-09
	Check:	Daniel 2025-01-09



NingBo KLS ELECTRONIC CO.,LTD.



Pearl Cotton

Reel

Each plate is vacuum packed with a vacuum bag (with a bag of desiccant inside) (6 plates)

Pearl Cotton

Triangular Board

Carton

Desiccantn

Notes:

1. Leave 30 empty spaces before and after each roll of tape
2. Each roll carries 2500PCS of products for packaging
3. Cover the cold sealed packaging with self-adhesive tape using a packaging machine
4. Cover the outer ring with protective tape, fix it with adhesive tape, and paste the roll label.
5. Place the packaged product in a vacuum bag, put a bag of desiccant inside the bag, and vacuum pack it.
6. Place the packaged 6 rolls of product in a cardboard box, and fix them around with triangular pressure lines, Place 2PCS pearl cotton on top and bottom respectively, and seal the outer box with adhesive tape in a "I" shape.
7. Please refer to the customer's information for the labeling method of the outer box

ANGLE TOLERANCE		PROJECTION		Description:	
±2°				Micro SD Card Connectors	
GENERAL TOLERANCE		UNITS	mm	KLS P/N:	
.x	±0.35	SHEET SIZE	A4	L-KLS1-SD116-H1.15-R	
.xx	±0.20	Draw:	Song	2025-01-09	
.xxx	±0.10	Check:	Daniel	2025-01-09	