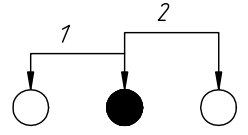
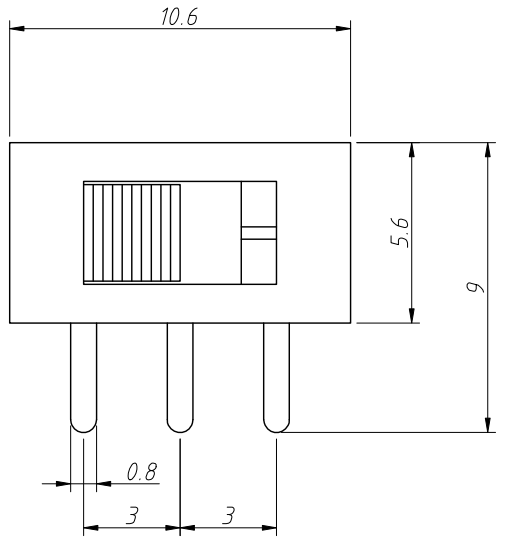


1  
RoHS Compliance

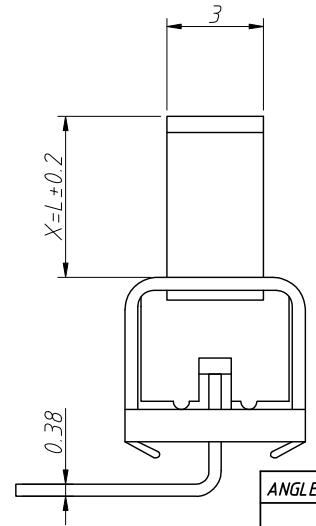
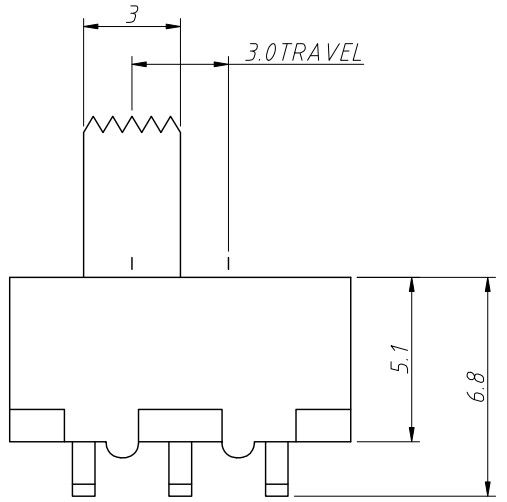
6		7		8	
REV	SYM	Revision Record		Appr.	Date
V0	KLS07088	New Version Release		Song	2025-03-10



SCHMATIC

Material:  
 Knob: POM Black  
 Terminal: Brass Strip, Ag Plated  
 Shell: Cold Rolled Steel Strip, Ni Plated  
 Code Chip: Brass Strip, Ag Plated  
 Base: Insulation Board, Natural  
 Spring: Carbon Steel Wire, Natural

Electric:  
 Rated: DC50V 0.5A  
 Contact Resistance: 100 mΩ Max  
 Insulator Resistance: 100 MΩ Min  
 Withstand Voltage: AC 500V  
 Force: 250±100gf  
 Life: 5000 Times  
 Hand Welding: 350 ± 10°C



Order Information:  
 L-KLS7-SS- 1 2 F 19-G 5

- L: RoHS
- Slide Switch
- Pole
- Throw
- Travelling
- Sequential No
- Knob Type
- Knobe Height(L=2~15)

ANGLE TOLERANCE	PROJECTION	Description:			
±3°		Slide Switch			
GENERAL TOLERANCE	UNITS	mm	KLS P/N:		
.x ±0.30	SHEET SIZE	A4	L-KLS7-SS-12F19-GX		
.xx ±0.20	Draw:	Song	2025-03-10	NingBo KLS ELECTRONIC CO.,L TD.	
.xxx ±0.10	Check:	Daniel	2025-03-10		