

1 RoHS Compliance

REV	SYM	Revision Record	Appr.	Date
V0	KLS07069	New Version Release	WuHao	2024-02-17

Description:

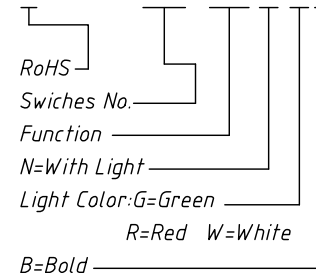
General Tolerance: 10 ± 0.4 Min
 10 ± 0.25 Max

Electrical Rating:

16A 125VAC/250VAC VDE:10(4)A250VAC
Contact Resistance: $20m\Omega$ Max
Insulation resistance:
 $1000M\Omega$ Min (500DC Between Open Contacts)
Dielectric Strength: 1500V Min 1 minute
Mechanical Life: 30000 Cycles Min
Electrical Life: 10000 Cycles Min
Temperature Rise At The Terminal: Max. $30^\circ C$
Solder Ability Of Terminal: Max $350^\circ C, 3S$
Ambient Temperature: T105/55
Ambient Humidity: 85% Max
Applicability For Appliance Of Class: Class II
Proof Tracking Resistance Index: 175
Degree Of Pollution: Normal
Any Cd Pb Hg Etc And It's Compounds Is Not Include In This Product

Order Information

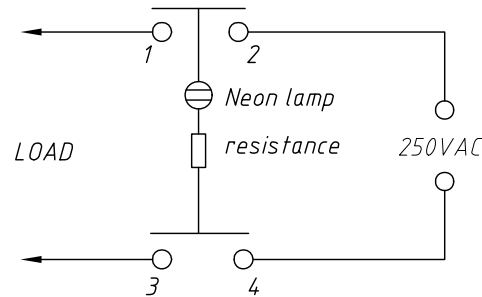
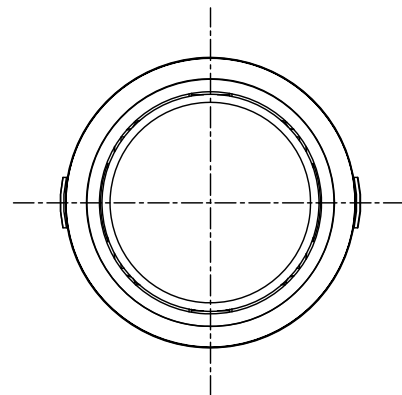
L-KLS7-527-201 N X B



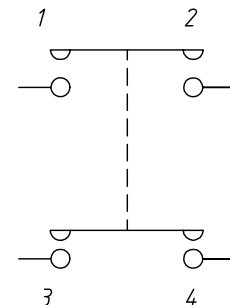
ANGLE TOLERANCE	PROJECTION	Description:	Button Switch With Light
$\pm 3^\circ$			
GENERAL TOLERANCE	UNITS	mm	KLS P/N:
x.x ± 0.30	SHEET SIZE	A4	L-KLS7-527-201NXB
x.xx ± 0.20	Draw:	WuHao	2025-02-17
x.xxx ± 0.10	Check:	Daniel	2025-02-17



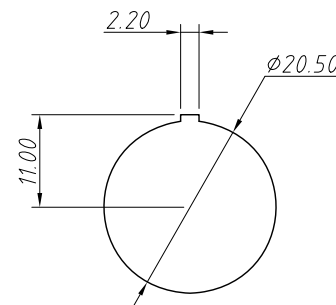
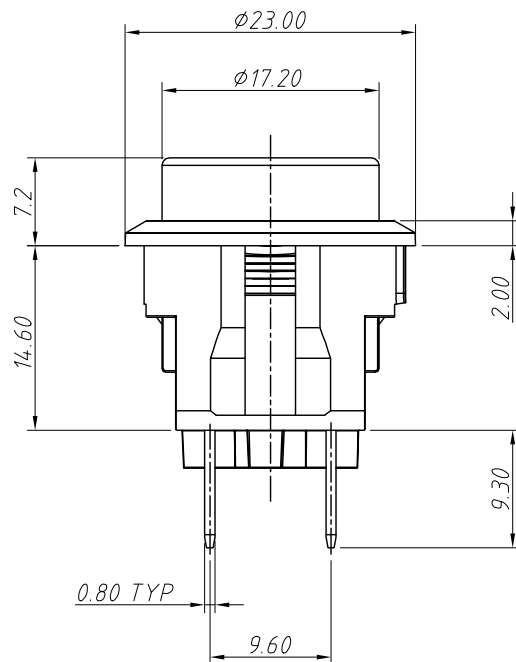
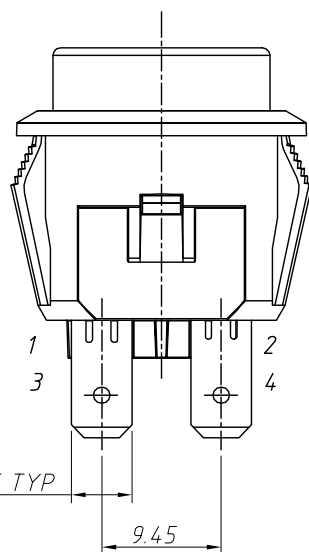
NingBo KLS ELECTRONIC CO.,L TD.



Circuit Of Switch



Circuit Dpst



Panel Cut Out
Thickness: 0.8-3mm