

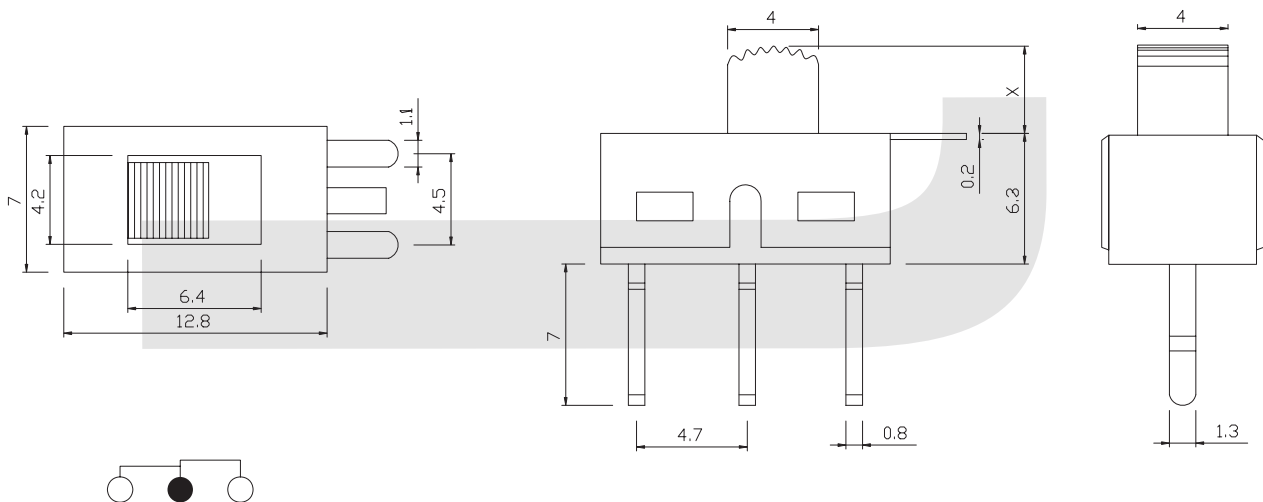
# Switch

## Slide Switch Series

KLS7-SS01-12E10 (1P2T) Slide Switch Series

### SPECIFICATIONS

- Rating: 3A 50VDC
- Contact Resistance: 50MΩ max
- Insulation Resistance: 500VDC 100MΩ Min
- Dielectric Strength: 100V AC 1 Minute
- Operating Force: 100gf~800gf
- Electrical Life : 10,000 cycles



## ORDER INFORMATION

KLS7-SS01 - 1 2 E 10 - X X - X

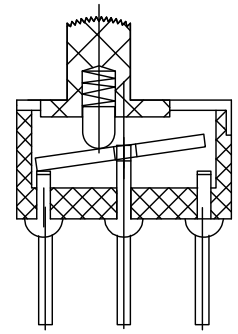
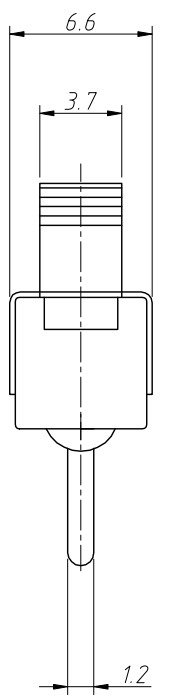
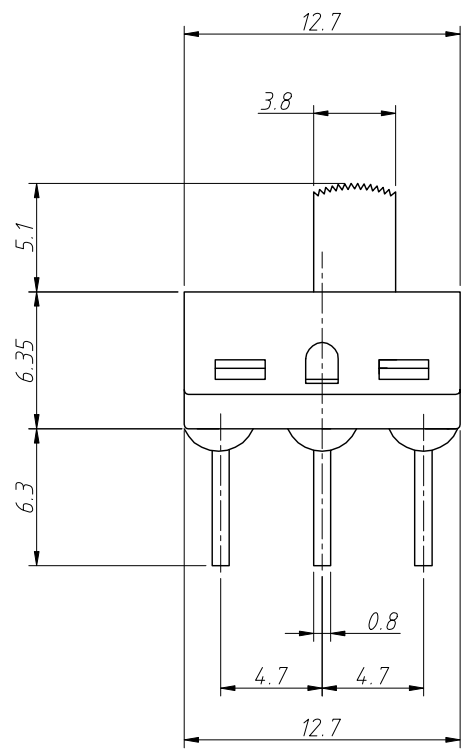
- Part Number
- Slide Switch Type
- Pole
- Throw
- Operating Force
- Knobe Height
- Sequential No.

Travelling					
C	D	E	F	G	H
1.5	2.0	2.5	3.0	3.5	4.0
I	J	K	L	N	P
4.5	5.0	5.5	6.0	7.0	8.0

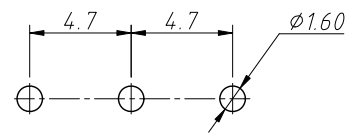
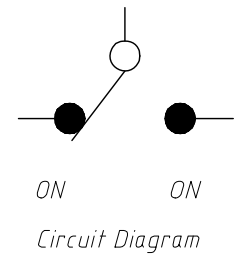
Knob Type					
RG	G	TG	VG	EG	CG

1  
RoHS Compliance

7		8		
REV	SYM	Revision Record	Appr.	Date
V0	KLS07031	New Version Release	Song	2025-02-15



Electric:  
 Rating: 2A 250V AC/5A 125V AC  
 Contact Resistance: 20mΩ Max  
 Insulation Resistance: DC500V 1000MΩ Min  
 Dielectric strength: 1500V AC, 1minute  
 Electrical Life: 10000 Cycles



PCB Layout

ANGLE TOLERANCE	PROJECTION	Description:		
±3°		Miniature Slide Switch		
GENERAL TOLERANCE	UNITS	mm	KLS P/N:	L-KLS7-SS01-12E10A-G5.1
.x ±0.30	SHEET SIZE	A4	NingBo KLS ELECTRONIC CO.,L TD.	
.xx ±0.20	Draw:	Song		2025-02-15
.xxx ±0.10	Check:	Daniel		2025-02-15