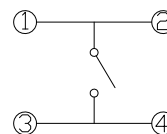
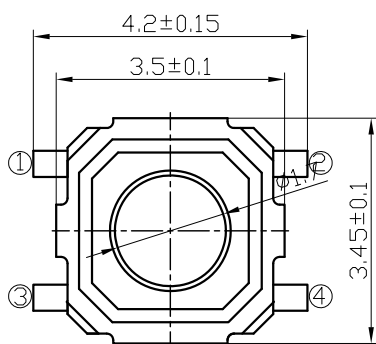
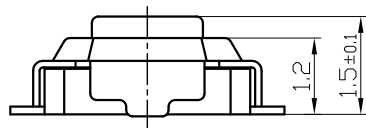
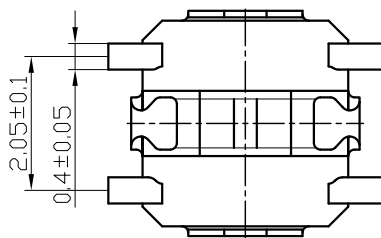


## Tactile Switches

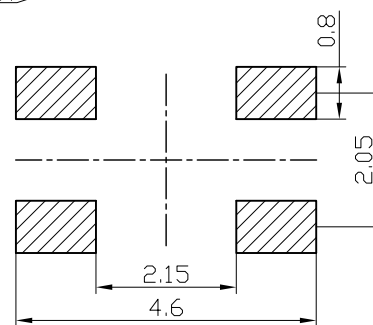
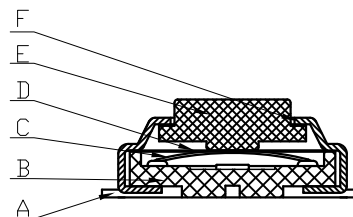
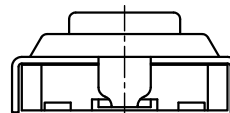
L-KLS7-TS3303A-1.5-250-B

### Specifications:

1. Rated Current: 50mA, 12V DC
2. Insulation resistance: 100MΩ Min. 100V DC  
After 260° high temperature, decay value within
3. Contact resistance: 200mΩ Max. 100V DC
3. Dielectric strength: 250V AC for 1min  
20% of the initial value



Circuit Diagram



P.C.B LAYOUT

## ORDER INFORMATION

**KLS7-TS3303A-1.5-250-B**

Part Number

Series No.

Packing: T=Tape B=Bulk

Hight: 1.5mm