

**Rocker Switch Series**

**KLS7-001 Rocker Switch Series**

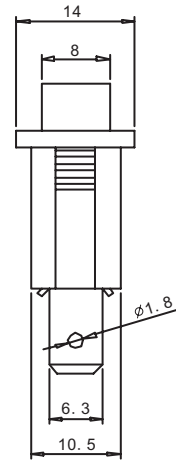
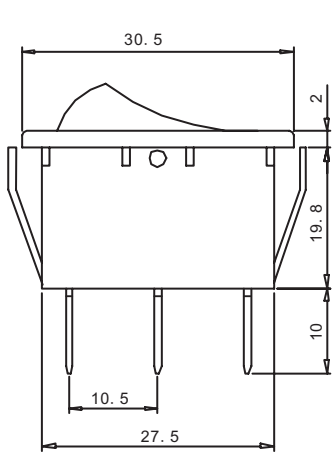
**MATERIAL**

1. Housing: Nylon 66
2. Rocker: PC & PA66
3. Contacts: Silver Alloy
4. Terminal: Brass Silver Plated
5. Lamp: Neon Lamp, Tungsten Lamp
6. Spring: SWP, SUS
7. Movable Arm: Brass Silver Plated

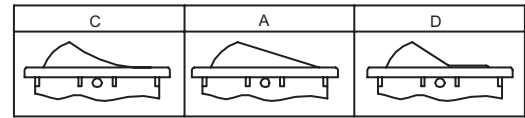


**ELECTRICAL**

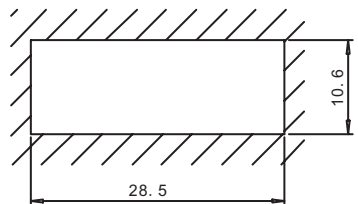
1. Electrical Rating: 10(4)A 250VAC T85  
16(4)A 250VAC T125/55 1E4  
15A 125V/7.5A 250AC
2. Mechanical life: Over 30000 Cycles
3. Electrical life: Over 10000 Cycles
4. Contact Resistance: <20mΩ
5. Insulation Resistance: >1000MΩ
6. High Voltage Resistance: >1500V 1 min
7. Ambient Temperature: Terminal Side -20°C~+85°C; Actuating Side -20°C~+55°C
8. Storage Temperature: -30°C~+80°C Max
9. Atmospheric Humidity: Max 85%
10. Actuating force: 4~8N(depends on different switch function)
11. Flammability: UL94 V-2
12. Temperature rise at the terminal: Max 30°C (UI1054)
13. Solder ability of terminal: Max 350°C 3S



**Cap Type**



**Panel hole size**



**ORDER INFORMATION**

**KLS7-001-11/N-C-2 RE/BK -P1.....(2)**

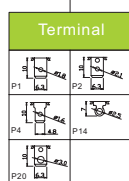
Series No.

Function
11/N: ON-OFF 3P w/lamp
11: ON-OFF 2P
12: ON-ON 3P

Cap Type
A: Flast
C: SoftLine
D: W/Round Len

Cap Printing
0: None
1: <input type="checkbox"/>
2: <input type="checkbox"/>
3: <input type="checkbox"/>
4: <input type="checkbox"/>
5: <input type="checkbox"/>
8: <input type="checkbox"/>

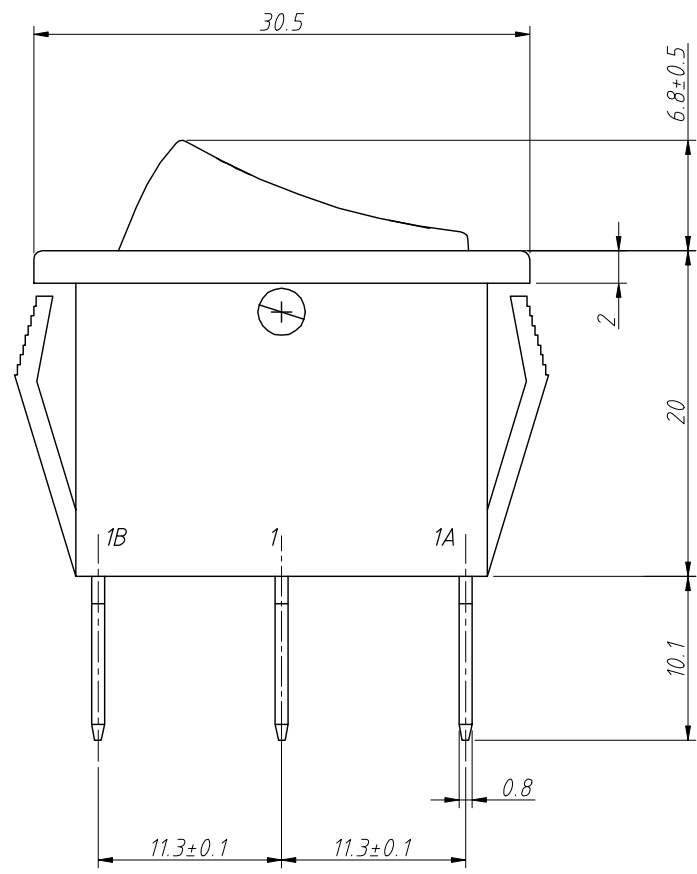
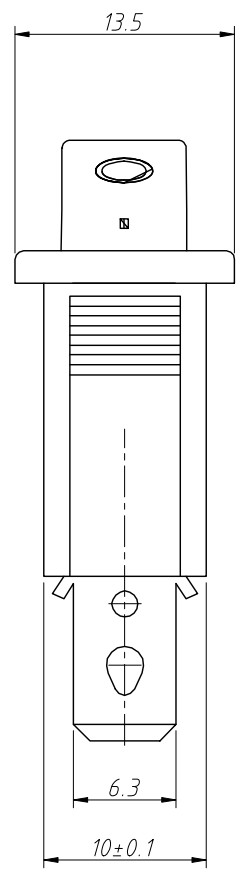
Color Cap/Housing
BK: Black
WT: White
RE: Red
OR: Orange
GR: Green
BL: Blue
GE: Grey



Votage
1: 110VAC
2: 220VAC
3: 12VDC
4: 24VDC

1  
RoHS Compliance

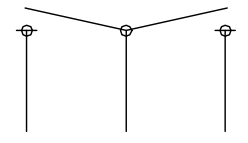
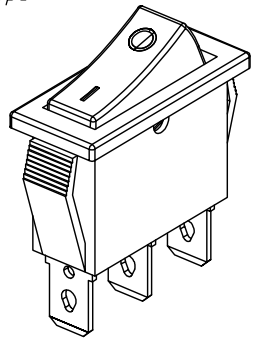
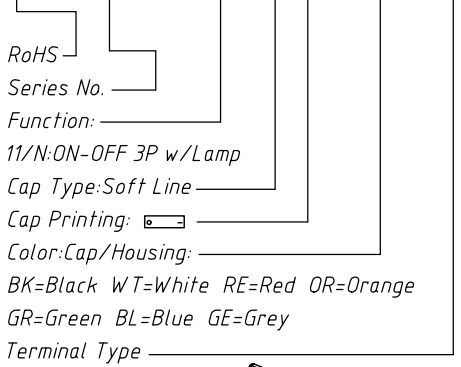
7		8	
REV	SYM	Revision Record	Appr.
V0	KLS07023	New Version Release	Song
			Date
			2025-01-21



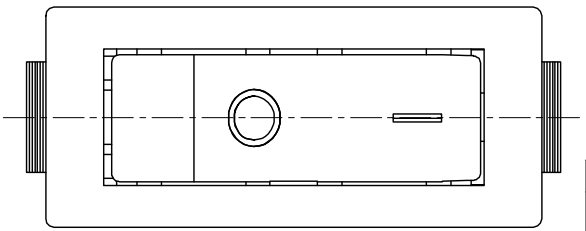
Notes:  
 Electric:  
 Rated :15/30A 250V AC  
 Contact Resistance:30 mΩ Max  
 Insulator Resistance:100 MΩ Min  
 Withstand Voltage:1500V AC  
 Force:4N Max  
 Durability:10000 Cycles

Order Information

L-KLS7-001-11/N-C-2-RE/BK-P2



Schematic Diagram



ANGLE TOLERANCE	PROJECTION	Description:		
±3°		Rocker Switch		
GENERAL TOLERANCE	UNITS	mm	KLS P/N:	L-KLS7-001-11/N-C-2-XX/XX-P2
.x ±0.30	SHEET SIZE	A4		
.xx ±0.20	Draw:	Song	2025-01-21	
.xxx ±0.10	Check:	Daniel	2025-01-21	

**KLS** NingBo KLS ELECTRONIC CO.,L TD.