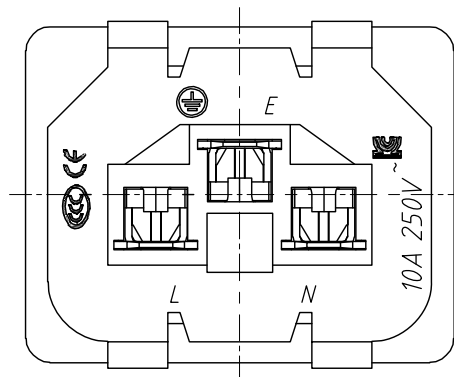
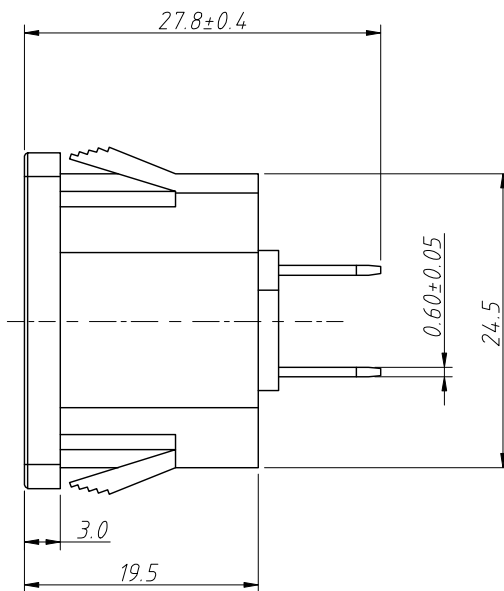
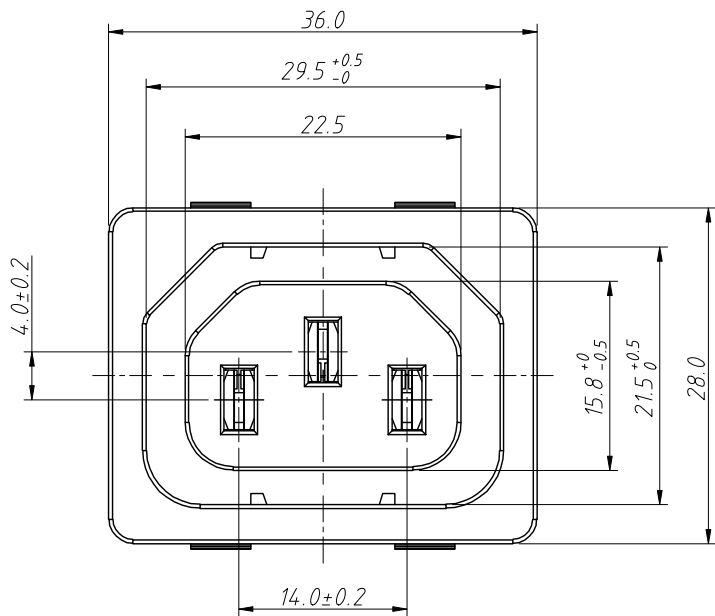


1 RoHS Compliance

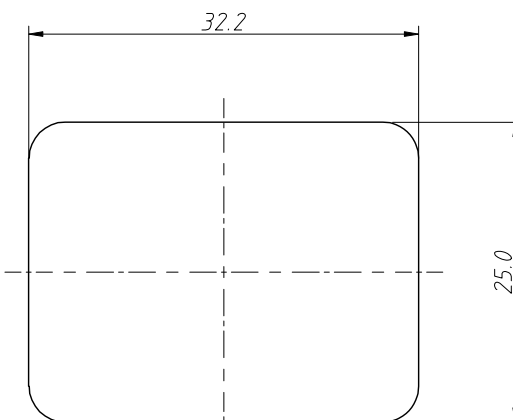
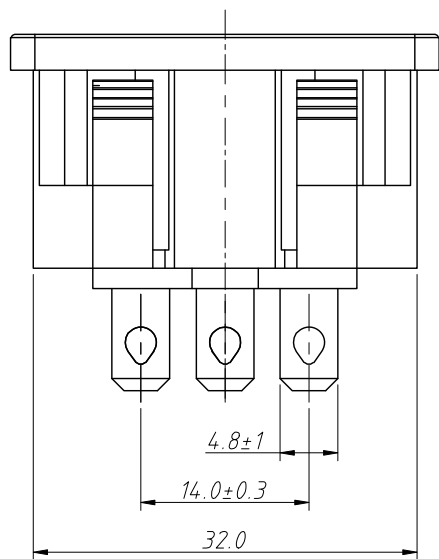
6	7	8		
REV	SYM	Revision Record	Appr.	Date
V0	KLS01149	New Version Release	Song	2025-03-04



Material:
Base:PA66
Terminal:Brass,T=0.6

Standard:1.IEC 60320-1
2.GB/T 17465.1

Electrical:
Ratng:10A 250V AC 3C KC TUV CE
Insert And Extract Force:1.36kgf ~ 6.8kgf
Operating Life:≥5000 cycles
Withstand Voltage:
Between all terminals: 2500VAC (50-60Hz)1min
Terminals to Base:3750V AC(50-60Hz)1min
Leakage Current:1mA
Insulation Resistance:≥100MΩ 500V DC
Glow-wire tep:750℃



PANEL CUT-OUT(T=1.0/1.5/2.0)

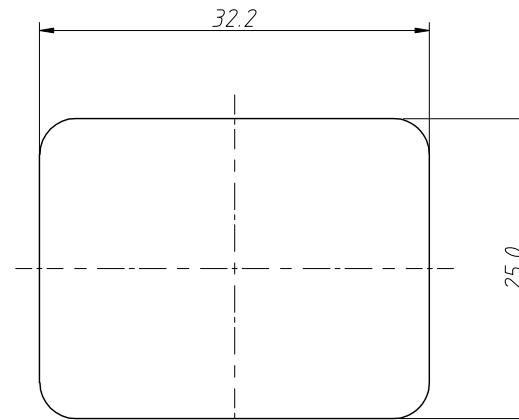
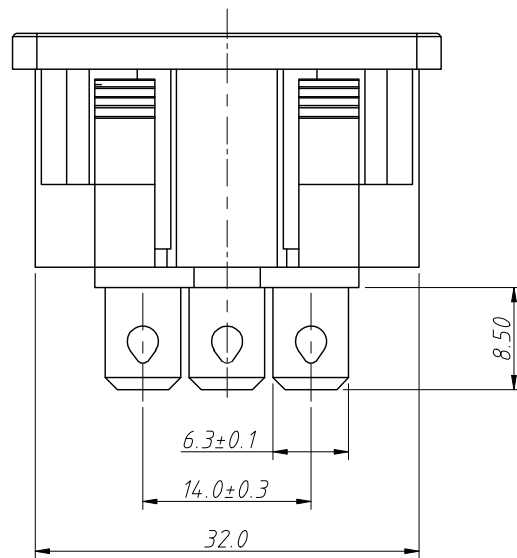
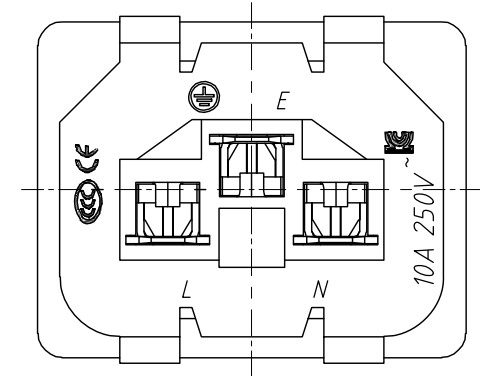
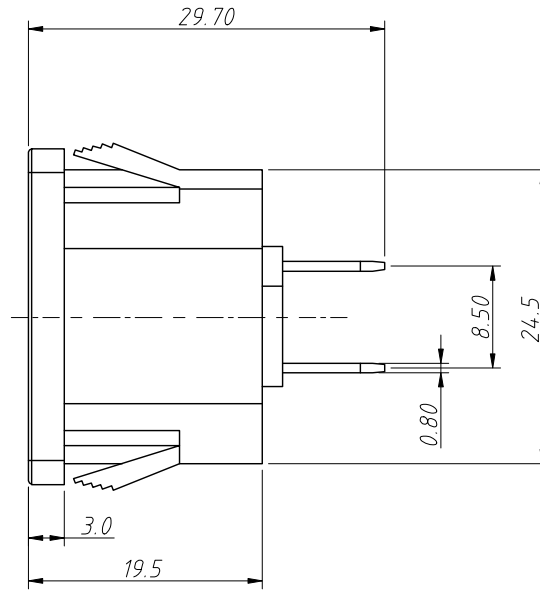
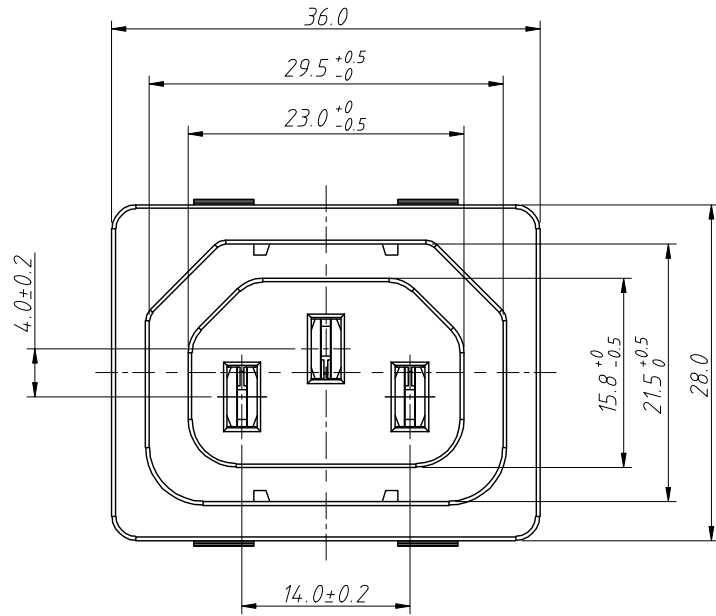
ANGLE TOLERANCE	PROJECTION	Description:
±3°		AC Inlet Socket
GENERAL TOLERANCE	UNITS	mm
0~5	±0.20	SHEET SIZE
5~30	±0.30	A4
30~	±0.50	Draw: Song
	Check: Daniel	2025-03-04
		KLS NingBo KLS ELECTRONIC CO.,L TD.



NingBo KLS ELECTRONIC CO.,L TD.

1 RoHS Compliance

6	7	8		
REV	SYM	Revision Record	Appr.	Date
V0	KLS01149	New Version Release	Song	2025-03-04



PANEL CUT-OUT

Material:
Base:PA66
Terminal:Brass,T=0.8

Electrical:
Ratng:10A 250V AC 3C KC TUV CE
Insert And Extract Force:1.36kgf~ 6.8kgf
Terminal Strength:≥80N
Operating Life:≥5000 cycles
Withstand Voltage:
Between all terminals: 2500VAC (50-60Hz)1min
Terminals to Base:3750V AC(50-60Hz)1min
Leakage Current:1mA
Insulation Resistance:≥100MΩ 500V DC

ANGLE TOLERANCE	PROJECTION	Description:	AC Inlet Socket	
±3°				
GENERAL TOLERANCE	UNITS	mm	KLS P/N:	L-KLS1-AS-302-2B
.x ±0.30	SHEET SIZE	A4		
.xx ±0.20	Draw:	Song	2025-03-04	NingBo KLS ELECTRONIC CO.,L TD.
.xxx ±0.10	Check:	Daniel	2025-03-04	