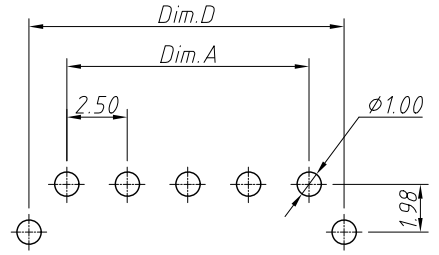
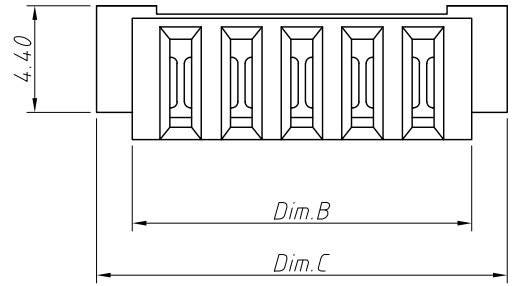


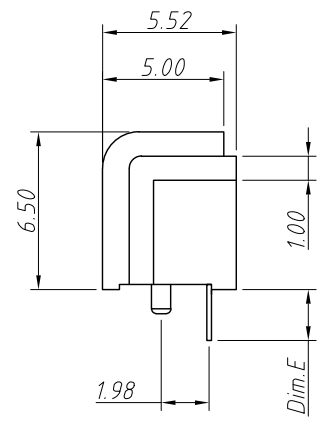
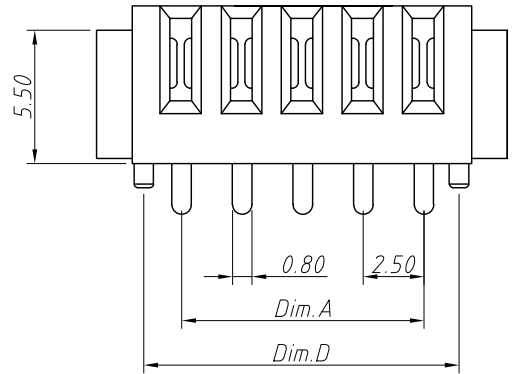
1
RoHS Compliance

2	3	4	5	6	7	8
REV	SYM	Revision Record		Appr.	Date	
V0	KLS05084	New Version Release		WuHao	2025-03-03	



Recommended PCB Layout
Tolerance: ±0.05mm

No. Of Pins	Dimension				
	Dim.A	Dim.B	Dim.C	Dim.D	Dim.E
03	5.00	9.00	11.95	8.00	2.1/3.0
04	7.50	11.50	14.45	10.50	2.1/3.0
05	10.00	14.00	16.95	13.00	2.1/3.0
06	12.50	16.50	19.45	15.50	2.1/3.0
07	15.00	19.00	21.95	18.00	2.1/3.0
08	17.50	21.50	24.45	20.50	2.1/3.0
09	20.00	24.00	26.95	23.00	2.1/3.0
10	22.50	26.50	29.45	25.50	2.1/3.0
11	25.00	29.00	31.95	28.00	2.1/3.0
12	27.50	31.50	34.45	30.50	2.1/3.0



Material:
 Insulator: Nylon 9T, UL94V-0
 Contact: Phosphor Bronze, Gold Plated

Electric:
 Current Rating: 7A
 Instant Current: 10A
 Contact Resistance: 30mΩ
 Insulation Resistance: 100MΩ
 Dielectric Voltage: 500V
 Operating Temperature: -40°C ~ 105°C

Order Information
 L-KLS1-LBC05A-5P-S-W

RoHS
 No.: Of Pin(3~12)
 Pin Length
 S=2.1 S1=3.0
 W=With Post
 N=Without Post

ANGLE TOLERANCE	PROJECTION	Description:				
±3°		Battery Holder				
GENERAL TOLERANCE	UNITS	mm	KLS P/N:		L-KLS1-LBC05A-XXP-XX-X	
.x ±0.30	SHEET SIZE	A4			NingBo KLS ELECTRONIC CO.,L TD.	
.xx ±0.20	Draw:	WuHao	2025-03-03			
.xxx ±0.10	Check:	Daniel	2025-03-03			