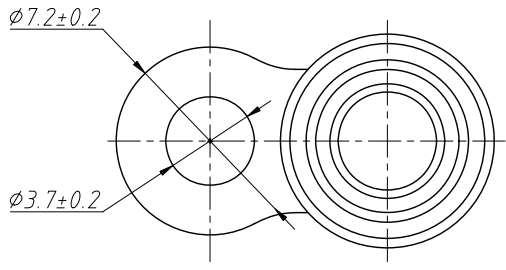
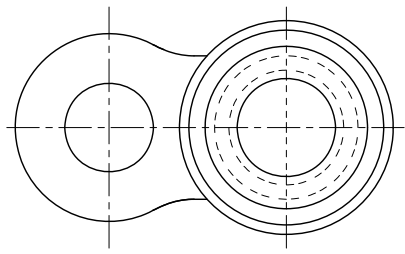
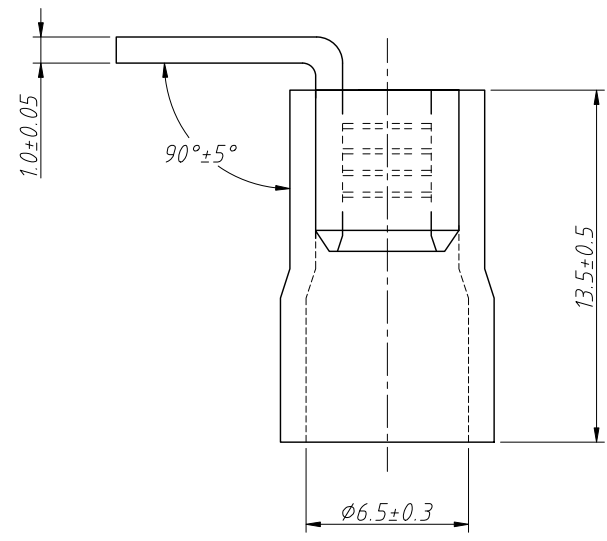


1
RoHS Compliance

6		7		8	
REV	SYM	Revision Record		Appr.	Date
V0	KLS08263	New Version Release		Song	2025-02-24



Notes:
 Terminal Material: Copper, T=1.0mm, Matte Tin Plated
 Casing Material: Yellow Plastic Sleeve
 Wire Range: AWG 12 ~ 10#
 Packing Qty: 0.5K/Bag



ANGLE TOLERANCE	PROJECTION		Description:		
±3°			Cold Pressed Terminal		
GENERAL TOLERANCE	UNITS	mm	KLS P/N:	L-KLS8-01103R-RV5.5-3.5	
.x ±0.20	SHEET SIZE	A4		NingBo KLS ELECTRONIC CO.,L TD.	
.xx ±0.15	Draw:	Song	2025-02-24		
.xxx ±0.10	Check:	Daniel	2025-02-24		