

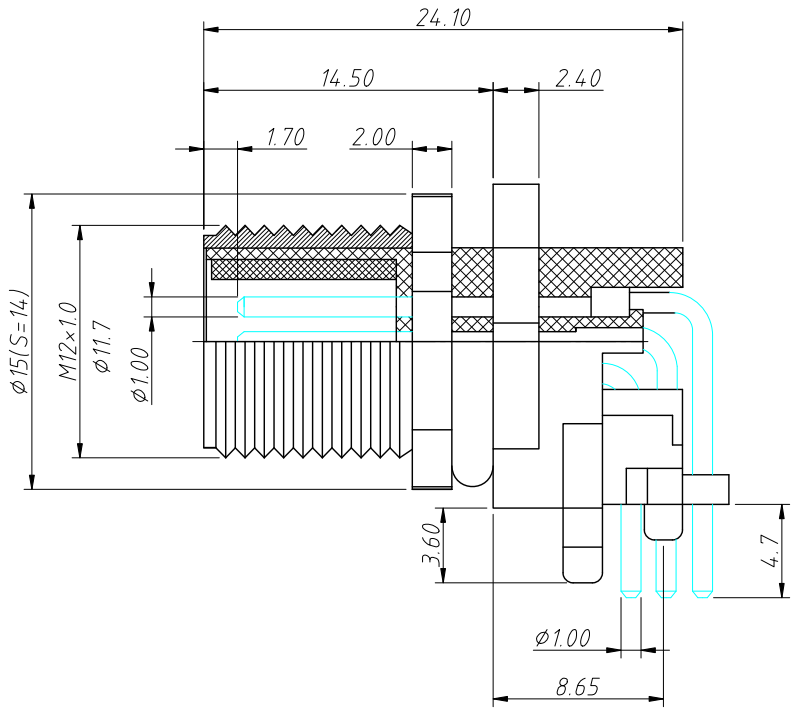
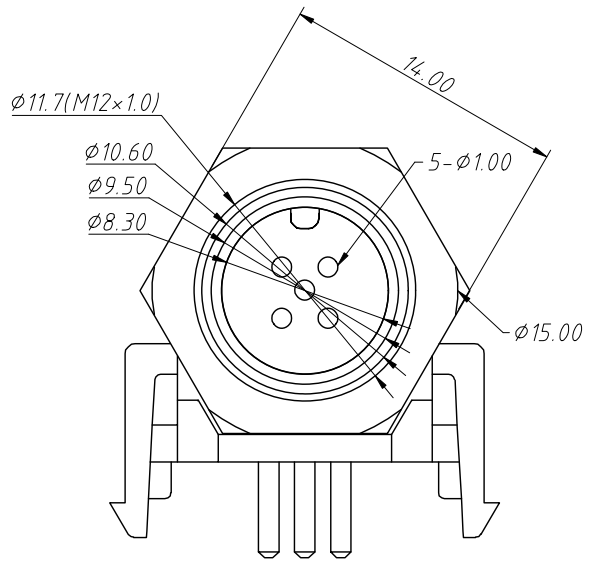
RoHS Compliance

REV	SYM	Revision Record	Appr.	Date
V0	KLS15024	New Version Release	Song	2025-02-24

PIN NO.	02	03	04	05	06	07	08
A							
B							
D							

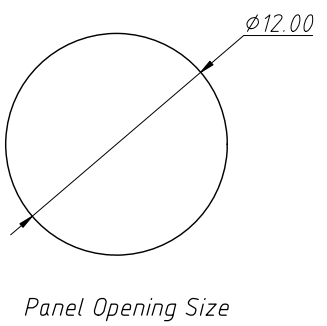
Material:  
 Housing:PA66+GF  
 Pin:Bronze,Gold-Plated  
 Nut:Brass,Nickel Plated  
 O-Ring:EPDM,Black

Electric:  
 Rated Current:2-5Pin:4A  
 6-8Pin:2A  
 Rated Voltage:2-5Pin:60V  
 6-8Pin:30V  
 Insulator Resistance:1000 MΩ Min  
 Contact Resistance:10 mΩ Max  
 Operation Temperature:-40°C ~ 105°C  
 Engagement Force:50N Max  
 Disengagement force:5N Min  
 Mechanical Life:500 Times Min  
 IP Rating:IP67/IP68  
 Flammability:UL94 V-0



Order Information  
**L-KLS15-M12 A-R2 04-D**

RoHS  
 M12:Screw Type  
 Type:A-Coding  
 B-Coding D-Coding  
 R2:  
 PCB 90° ,Panel mount,  
 Front lock,Male  
 Number of Contacts  
 D=With Shield

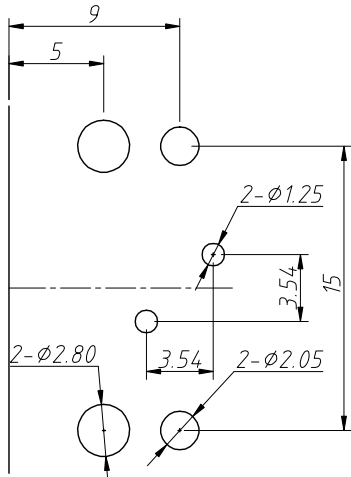


ANGLE TOLERANCE	PROJECTION	Description:	Metal Circular Connector, Right Angle Pin,With Shielding
±3°			
GENERAL TOLERANCE	UNITS	mm	KLS P/N:
.x ±0.30	SHEET SIZE	A4	L-KLS15-M12X-R2XX-D
.xx ±0.20	Draw:	Song	1 OF 2
.xxx ±0.10	Check:	Daniel	2025-02-24

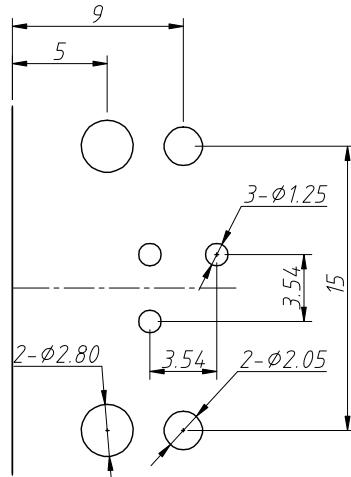
NingBo KLS ELECTRONIC CO.,L TD.

RoHS Compliance

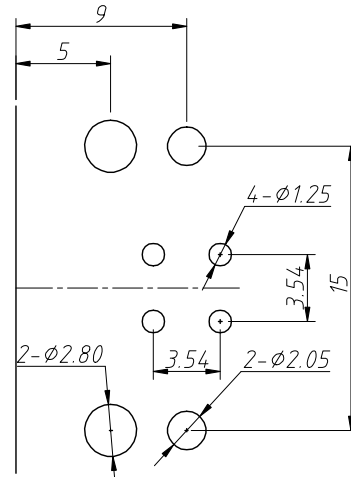
REV	SYM	Revision Record	Appr.	Date
V0	KLS15024	New Version Release	Song	2025-02-24



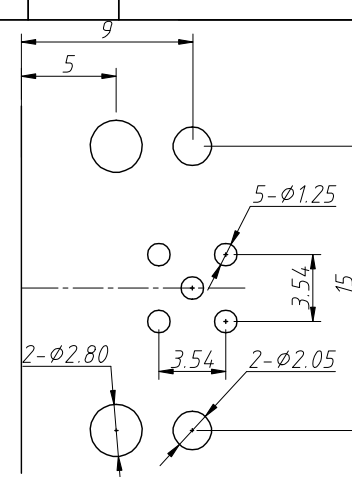
2Pin PCB Layout



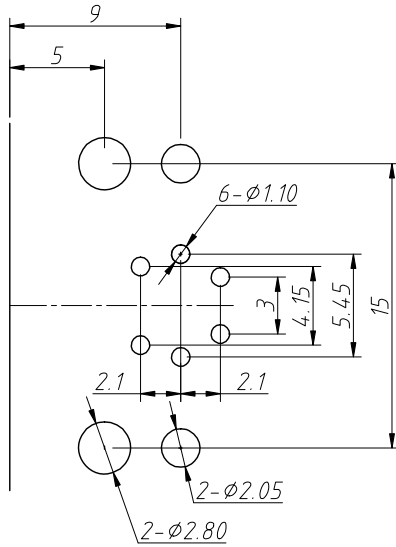
3Pin PCB Layout



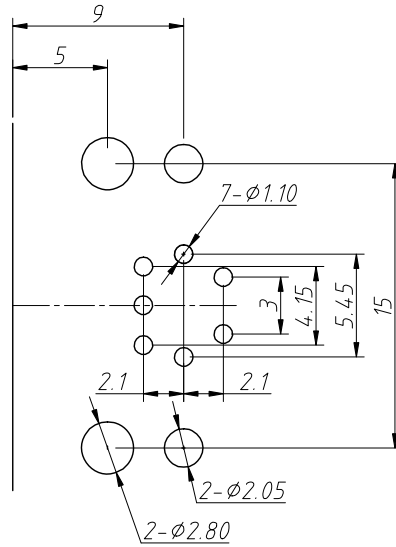
4Pin PCB Layout



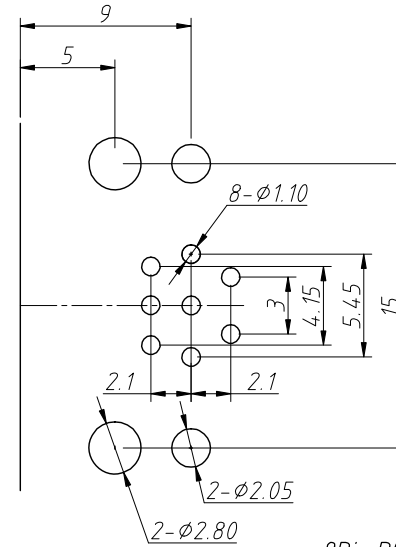
5Pin PCB Layout



6Pin PCB Layout



7Pin PCB Layout



8Pin PCB Layout

ANGLE TOLERANCE	PROJECTION	Description:		
±3°		Metal Circular Connector, Right Angle Pin,With Shielding		
GENERAL TOLERANCE	UNITS	mm	KLS P/N:	L-KLS15-M12X-R2XX-D
.x ±0.30	SHEET SIZE	A4	2 OF 2	NingBo KLS ELECTRONIC CO.,L TD.
.xx ±0.20	Draw:	Song	2025-02-24	
.xxx ±0.10	Check:	Daniel	2025-02-24	