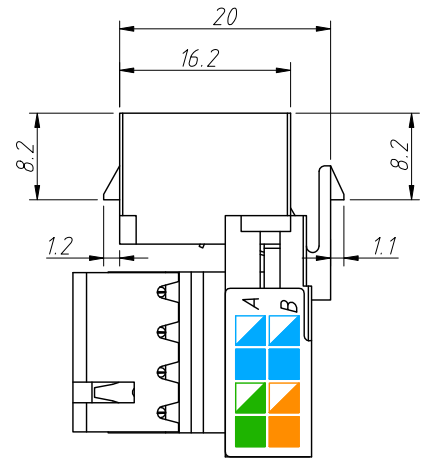
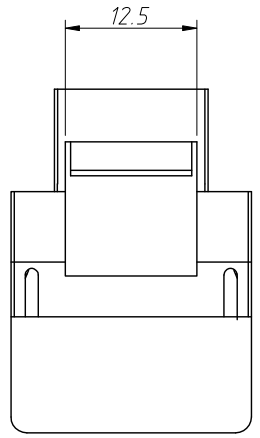


1
RoHS Compliance

6		7		8	
REV	SYM	Revision Record		Appr.	Date
V0	KLS12019	New Version Release		Song	2024-11-28

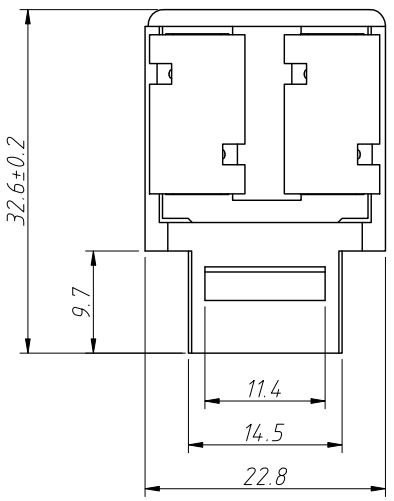
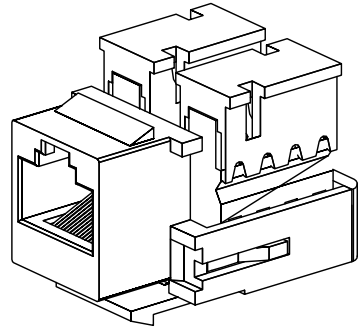
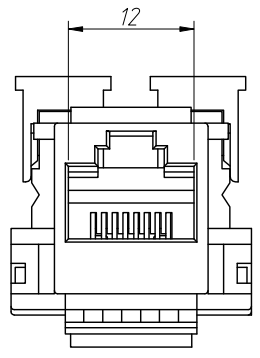


Material:
 Housing:PC, Transparent
 PCB : FR-4
 Contact: Phosphor Bronze, T=0.30mm, 3u"Gold-Plated

Electrical:
 Rated Voltage:125V AC RMS
 Current Rating:1.5AMP
 Contact Resistance:20mΩ Max
 Insulation Resistance:500MΩ Min 100V DC
 Voltage Resistance:DC 1000V/AC 700V RMS 60Hz, 1min
 Transmission Performance:

- (1) ANSI/TIA 568C CAT5E Prem. Link
- (2) ISO 11801 PL Class D 90m/20m

Temperature: -25°C to 70°C
 Humidity:10%~90% RH
 Insertion And Extraction Force: ≤ 20N
 Insertion And Extraction Life: ≥ 750 times
 Applicable Wire Diameter: 0.35mm-0.6mm
 Cable Outer Diameter: 5.0mm-7.5mm
 Salt Spray Test:24H Min (5% NaCl solution)



ANGLE TOLERANCE	PROJECTION	Description:				
±3°		CAT5E UTP 8P8C Keystone Jacks				
GENERAL TOLERANCE						
XX ±0.2	UNITS	mm	KLS P/N:	L-KLS12-DK8801-CAT5E		
x. ±0.16	SHEET SIZE	A4	NingBo KLS ELECTRONIC CO.,L TD.			
x.x ±0.12	Draw:	Song				2024-11-28
x.xx ±0.08	Check:	Daniel				2024-11-28