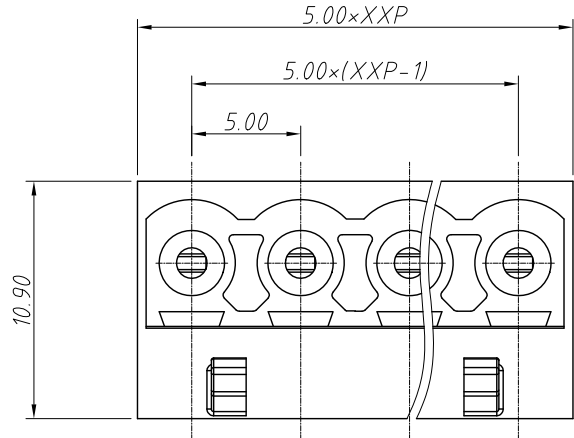


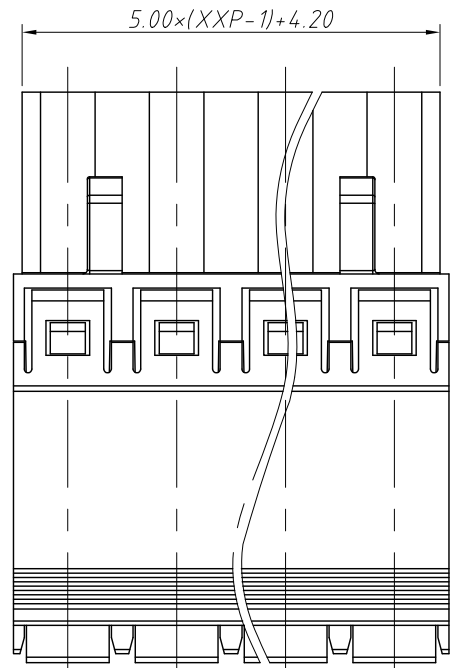
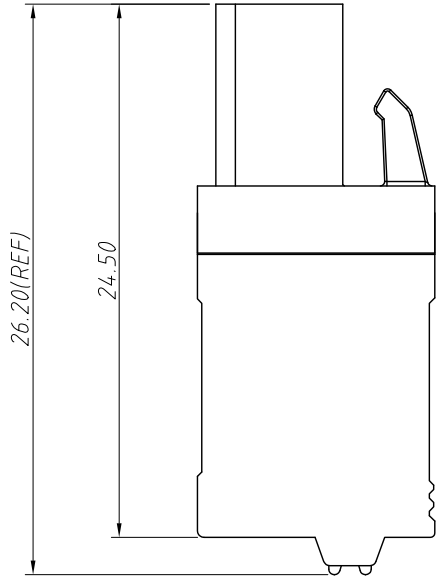
1
RoHS Compliance

6		7		8	
REV	SYM	Revision Record		Appr.	Date
V0	KLS02006	New Version Release		Jenny	2024-08-29



Electrical Characteristics	UL	IEC
Rated Voltage	300V	320V
Rated Current	12A	12A
Withstand Voltage	1600V / 1 min	4.0
Wire Range	16~24 AWG	0.2-2.5mm ²

Material and other:
 Housing:PA66, UL94V-0
 Contactor:Copper alloy,Sn Plated
 Steip Length:11-12mm
 Operating temperature:-40°C ~ +105°C



Order Information
 L-KLS2-EFKK-5.00-XXP-4

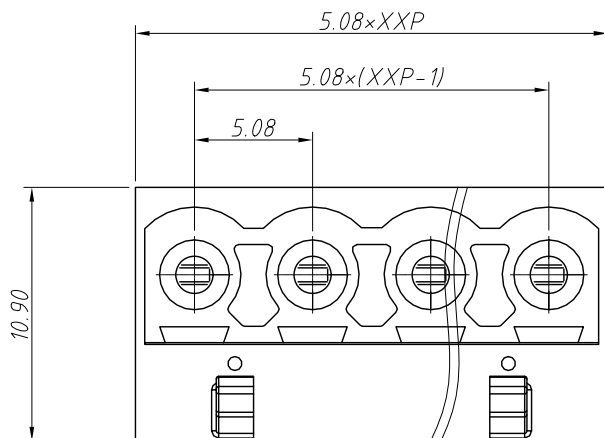
RoHS
 Terminal Block
 Pitch:5.00mm
 No.:Of (02~24) Pin
 Color:
 1=Gray 2=Blue 3=Black
 4=Green 5=Orange 6=Red
 7=Transp 8=Yellow 9=White

ANGLE TOLERANCE	PROJECTION	Description:			
±3°		Pitch 5.00mm Pluggable Terminal Block,Plug			
GENERAL TOLERANCE	UNITS	mm	KLS P/N:	L-KLS2-EFKK-5.00-XXP-4	
0~30	±0.50	SHEET SIZE	A4		
30~60	±0.75	Draw:	Jenny	2024-09-05	
60~90	±1.00	Check:	Daniel	2024-09-05	

NingBo KLS ELECTRONIC CO.,L TD.

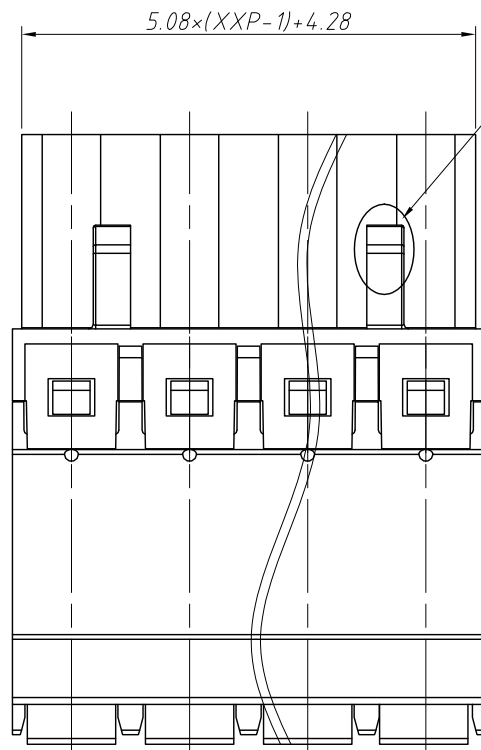
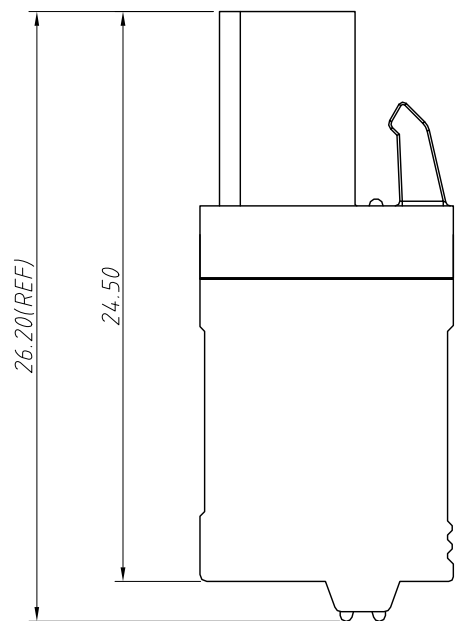
1 RoHS Compliance

6	7	8		
REV	SYM	Revision Record	Appr.	Date
V0	KLS02006	New Version Release	Jenny	2024-08-29



Electrical Characteristics	UL	IEC
Rated Voltage	300V	320V
Rated Current	12A	12A
Withstand Voltage	1600V / 1 min	4.0
Wire Range	16~24 AWG	0.2-2.5mm ²

Material and other:
 Housing:PA66, UL 94 V-0
 Cover:PA66, UL 94 V-0
 Button:Pom,UL 94-HB
 Clamp:Copper alloy,Sn Plated
 Spring:Stainless steel
 Stripping Length:11-12mm
 Operating temperature:-40°C ~ +105°C



Order Information
 L-KLS2-EFKK-5.08-XXP-4

RoHS
Terminal Block
Pitch:5.08mm
No.:Of (02~24) Pin
Color:
1=Gray 2=Blue 3=Black
4=Green 5=Orange 6=Red
7=Transp 8=Yellow 9=White

ANGLE TOLERANCE	PROJECTION	Description:
±3°		Pitch 5.08mm Pluggable Terminal Block,Plug
GENERAL TOLERANCE	UNITS	mm
0~30 ±0.50	SHEET SIZE	A4
30~60 ±0.75	Draw:	Jenny
60~90 ±1.00	Check:	Daniel
KLS P/N:		L-KLS2-EFKK-5.08-XXP-4
KLS ELECTRONIC		NingBo KLS ELECTRONIC CO.,L TD.