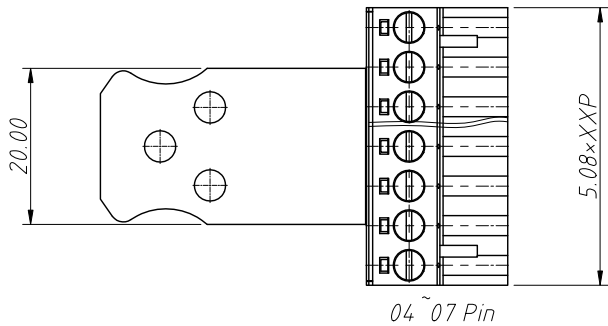
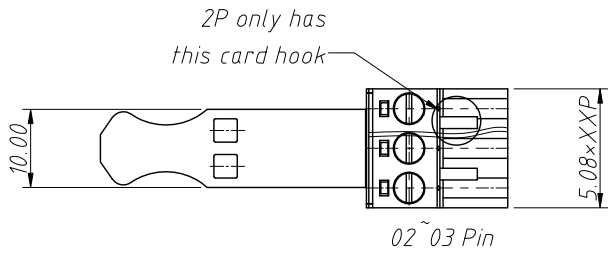
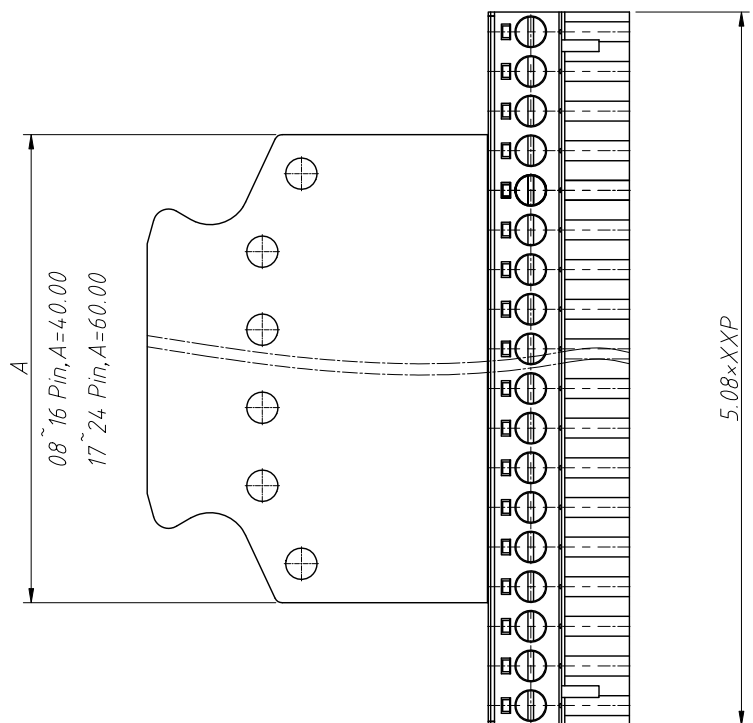


RoHS Compliance

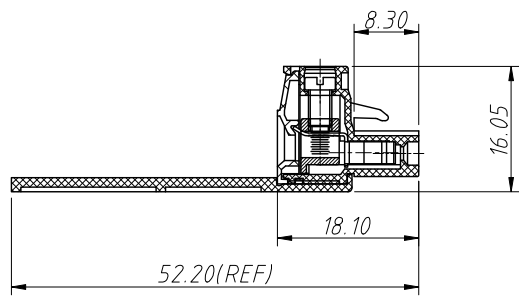
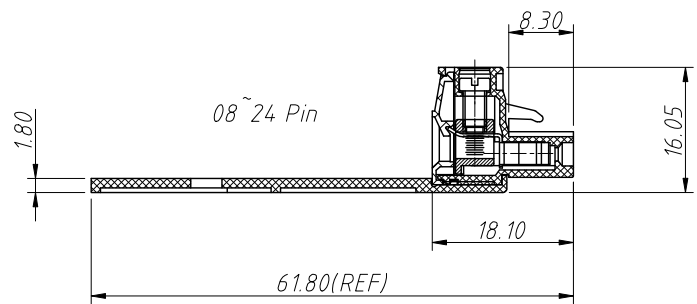
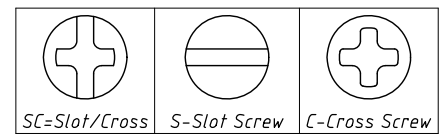
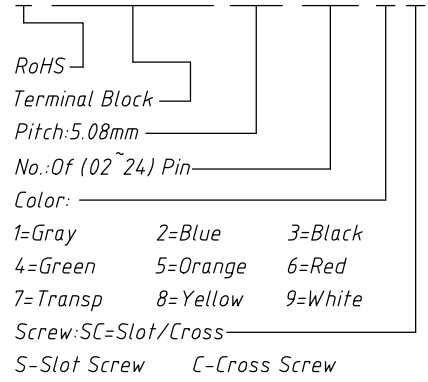
REV	SYM	Revision Record	Appr.	Date
V0	KLS02006	New Version Release	Jenny	2024-09-04



Electrical Characteristics	UL	IEC
Rated Voltage	300V	320V
Rated Current	15A	10A
Withstand Voltage	2000V / 1min	---
Wire Range	14~26 AWG	2.5mm ²

Order Information

L-KLS2-EDKS-5.08-XXP-4 X



Material and other:
 Housing: PA66, UL 94 V-0
 Clamp: Copper alloy, Ni Plated
 Cage: Copper alloy, Ni Plated
 Screws: M3, Steel, Zn Plated
 Screw Torque: 0.5Nm (4.5Lb.in)
 Stripping Length: 7-8mm
 Temp. Range: -40°C ~ +105°C

ANGLE TOLERANCE	PROJECTION	Description:
±3°		Pitch 5.08mm Pluggable Terminal Block, Plug
GENERAL TOLERANCE	UNITS	mm
0~30 ±0.50	SHEET SIZE	A4
30~60 ±0.75	Draw:	Jenny 2024-09-04
60~90 ±1.00	Check:	Daniel 2024-09-04
		KLS NingBo KLS ELECTRONIC CO.,L TD.