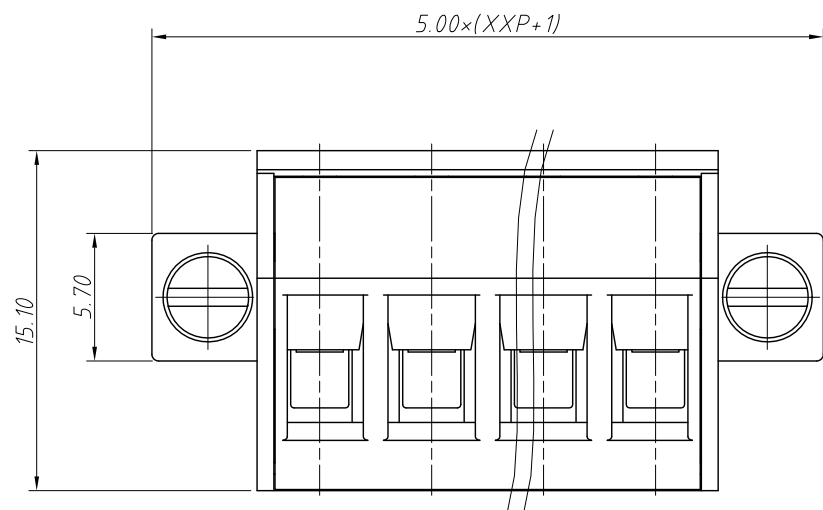
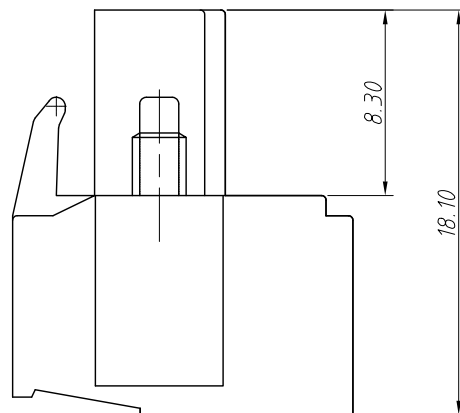
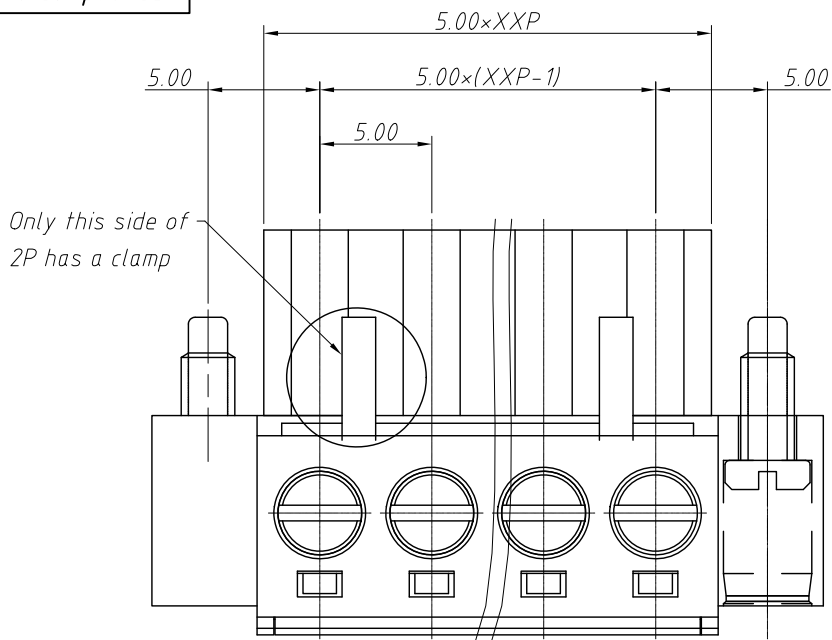


RoHS Compliance



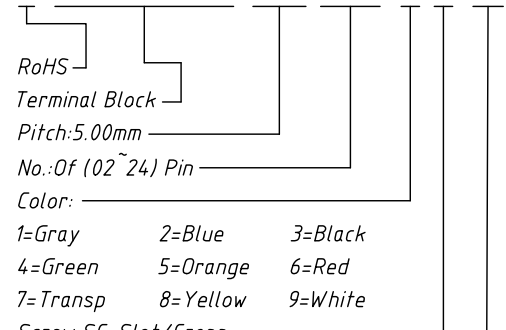
REV	SYM	Revision Record	Appr.	Date
V0	KLS02006	New Version Release	WuHao	2024-10-30

Electrical Characteristics	UL	IEC
Rated Voltage	300V	250V
Rated Current	15A	12A
Withstand Voltage	1600V/1 min	4.0 KV
Wire Range	28 ~ 12 AWG	0.2 ~ 2.5mm ²

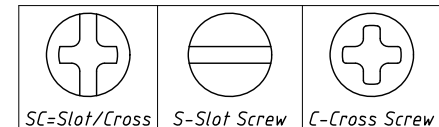
Material and other:
 Housing: PA66, UL94V-0
 Pin Header: Copper Alloy, Ni Plated
 Screw/Torque: M3/0.5N.m
 Stripping Length: 7 ~ 8mm
 Operating temperature: -40°C ~ +105°C

Order Information

L-KLS2-EDDKN-5.00-XXP-4 C 09



Screw: SC=Slot/Cross
 S-Slot Screw C-Cross Screw



Product Code: 00 ~ 99

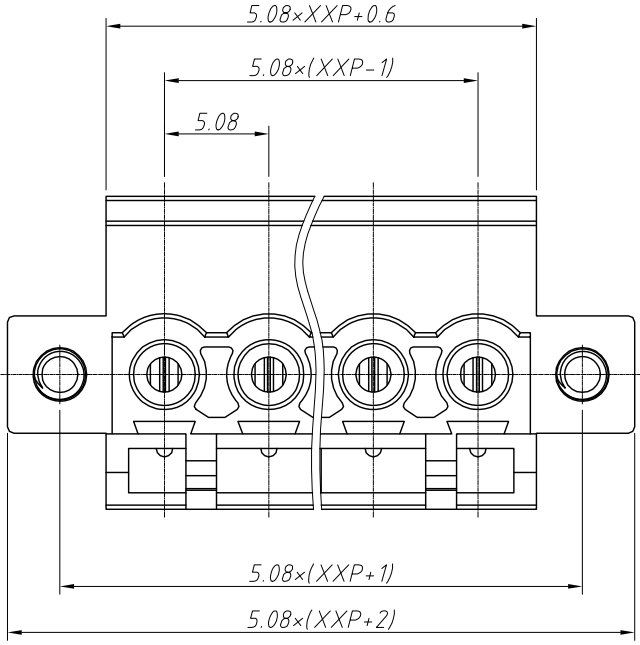
ANGLE TOLERANCE	PROJECTION	Description:
±3°		Pitch 5.00mm Terminal Block
GENERAL TOLERANCE	UNITS	mm
0 ~ 30	±0.50	SHEET SIZE
30 ~ 60	±0.75	A4
60 ~ 90	±1.00	Draw:
		WuHao
		2024-10-30
		Check:
		Daniel
		2024-10-30



NingBo KLS ELECTRONIC CO.,LTD.

1
RoHS Compliance

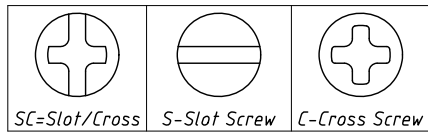
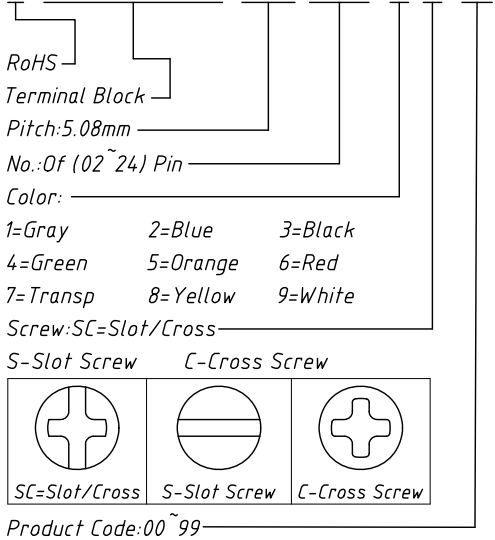
6	7	8
REV	SYM	Revision Record
V0	KLS02006	New Version Release
Appr.	Appr.	Date
WuHao	WuHao	2024-10-30



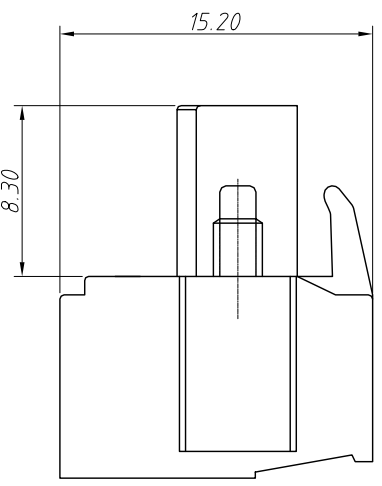
Electrical Characteristics	UL	IEC
Rated Voltage	300V	250V
Rated Current	15A	20A
Withstand Voltage	1600V/1 min	4.0 KV
Wire Range	28~12 AWG	0.2~2.5mm ²

Material and other:
Housing:PA66, UL94V-0
Pin Header:Copper Alloy,Sn Plated
Screw/Torque:M3/0.5N.m
Stripping Length:7~8mm
Operating temperature:-40°C ~ +105°C

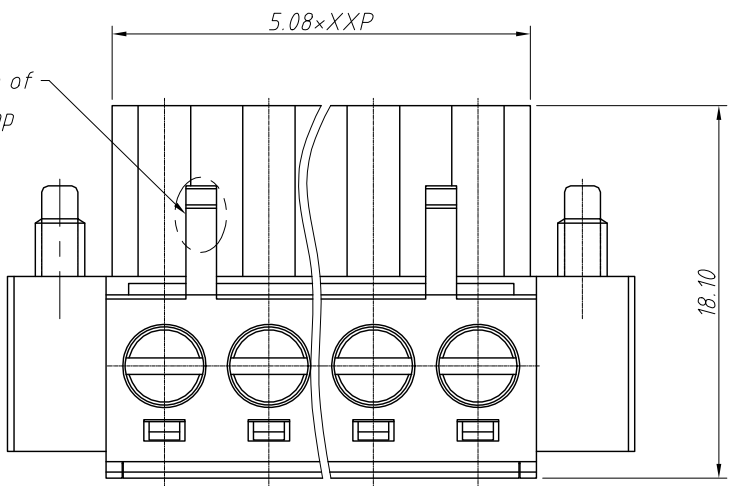
Order Information
L-KLS2-EDDKN-5.08-XXP-4 C 09



Product Code:00~99



Only this side of 2P has a clamp



ANGLE TOLERANCE	PROJECTION	Description:
±3°		Pitch 5.08mm Terminal Block
GENERAL TOLERANCE	UNITS	KLS P/N:
0~30 ±0.50	mm	L-KLS2-EDDKN-5.08-XXP-4C09
30~60 ±0.75	SHEET SIZE	
60~90 ±1.00	A4	
	Draw:	WuHao 2024-10-30
	Check:	Daniel 2024-10-30

