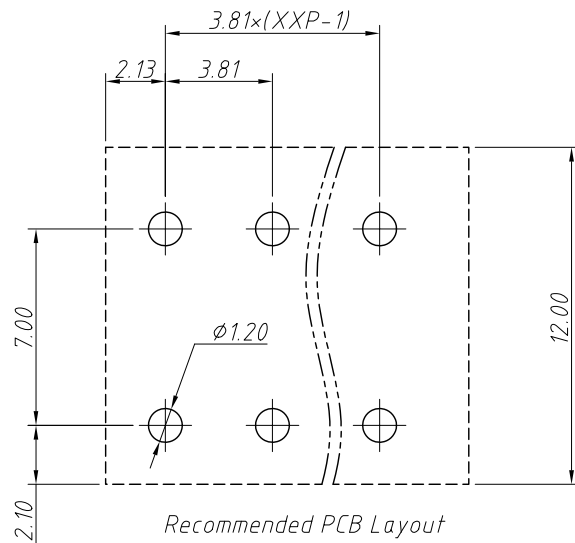
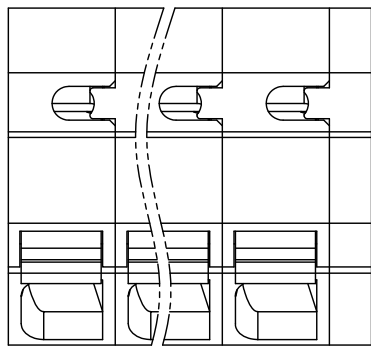


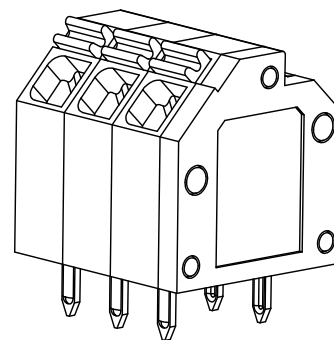
1 RoHS Compliance

REV	SYM	Revision Record	Appr.	Date
V0	KLS02006	New Version Release	Song	2024-09-02

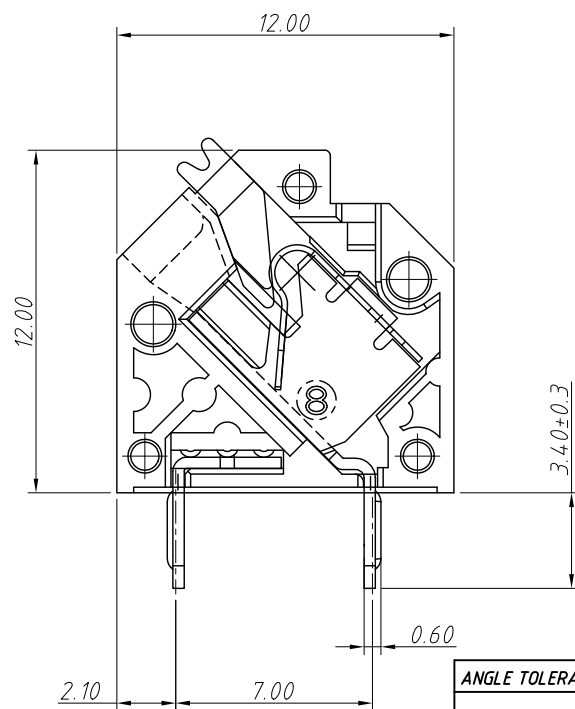
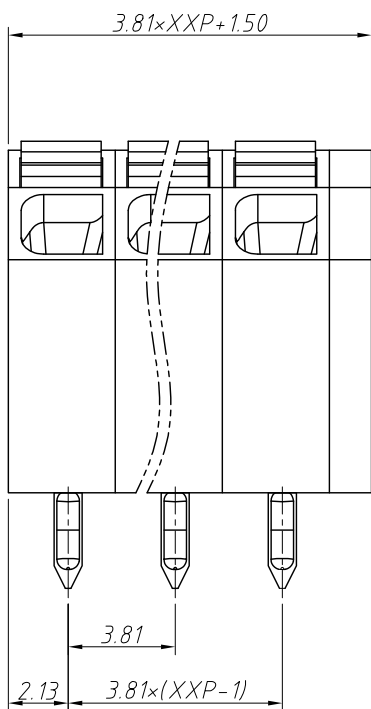
Electrical Characteristics	UL	IEC
Rated Voltage	300V	160V
Rated Current	10A	9A
Withstand Voltage	1600V/1min	2.5KV
Wire Range	26~16AWG	0.2~1.5mm <sup>2</sup>



Recommended PCB Layout



Material and other:  
 Housing: PA, UL 94 V-0  
 Pin Header: Cobby Alloy, Sn Plated  
 Stripping Length: 10mm  
 Operating Temperature: -40°C ~ +105°C



Order Information  
 L-KLS2-249-3.81-XXP-X

RoHS  
 Terminal Block  
 Pitch: 3.81mm  
 No.: Of (02~24) Pins  
 Color: 1=Gray 2=Blue 3=Black  
 4=Green 5=Orange 6=Red  
 7=Transp 8=Yellow 9=White

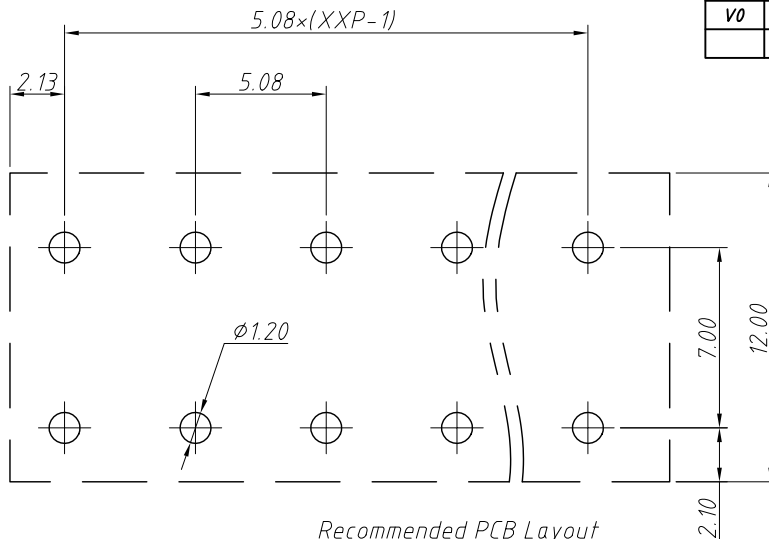
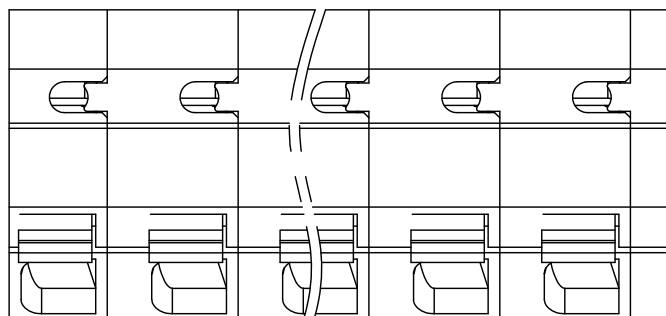
ANGLE TOLERANCE	PROJECTION	Description:	3.81mm Spring Terminal Blocks	
±3°				
GENERAL TOLERANCE	UNITS	mm	KLS P/N:	L-KLS2-249-3.81-XXP-X
0~30	±0.50	SHEET SIZE	A4	
30~60	±0.75	Draw:	Song	2024-09-02
60~90	±1.00	Check:	Daniel	2024-09-02



NingBo KLS ELECTRONIC CO.,LTD.

RoHS Compliance

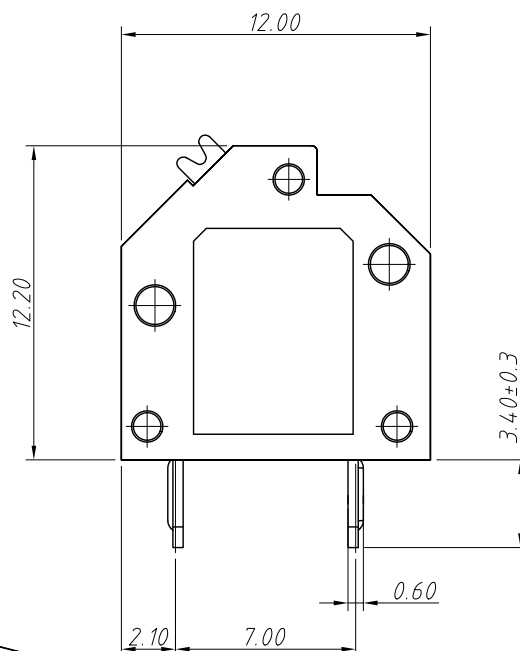
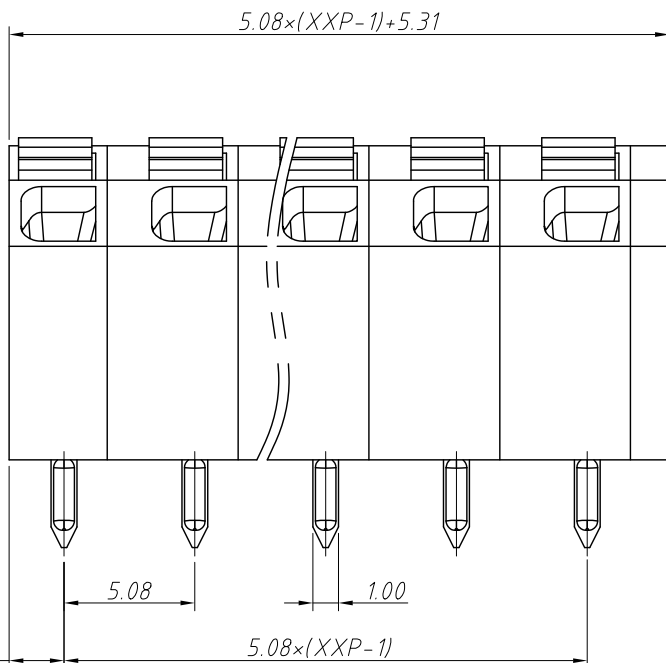
REV	SYM	Revision Record	Appr.	Date
V0	KLS02006	New Version Release	Song	2024-09-02



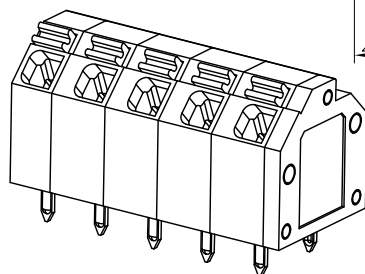
Recommended PCB Layout

Electrical Characteristics	UL	IEC
Rated Voltage	300V	160V
Rated Current	10A	9A
Withstand Voltage	1600V/1 min	2.5KV
Wire Range	26~16AWG	0.2~1.5mm <sup>2</sup>

**Material and other:**  
 Housing: PA66, UL 94 V-0  
 Pin Header: Cobby Alloy, Sn Plated  
 Stripping Length: 10mm  
 Operating Temperature: -40°C ~ +105°C



**Order Information**  
 L-KLS2-249-5.08-XXP-X  
 RoHS  
 Terminal Block  
 Pitch: 5.08mm  
 No.: Of (02~24) Pins  
 Color: 1=Gray 2=Blue 3=Black  
 4=Green 5=Orange 6=Red  
 7=Transp 8=Yellow 9=White



ANGLE TOLERANCE	PROJECTION	Description:		
±3°		5.08mm Spring Terminal Blocks		
GENERAL TOLERANCE	UNITS	mm	KLS P/N:	L-KLS2-249-5.08-XXP-X
0~30	±0.50	SHEET SIZE	A4	
30~60	±0.75	Draw:	Song	2024-09-02
60~90	±1.00	Check:	Daniel	2024-09-02



NingBo KLS ELECTRONIC CO.,L TD.