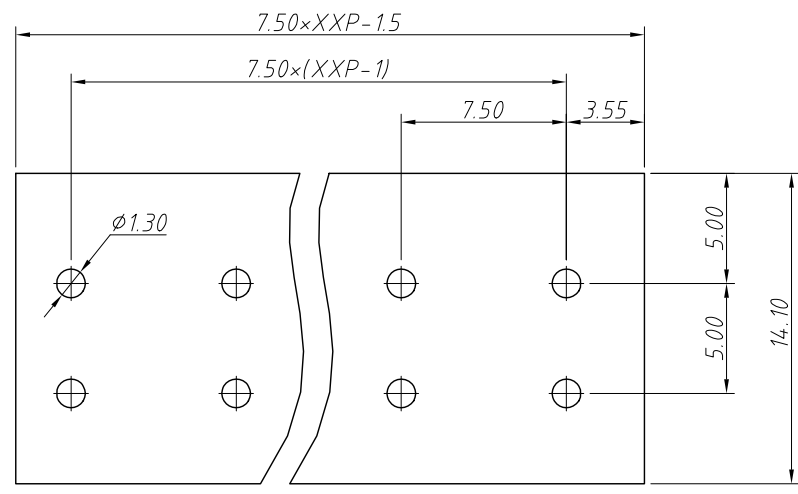


1  
RoHS Compliance

6	7	8
REV	SYM	Revision Record
V0	KLS02006	New Version Release
		Appr.
		Song
		Date
		2024-08-22



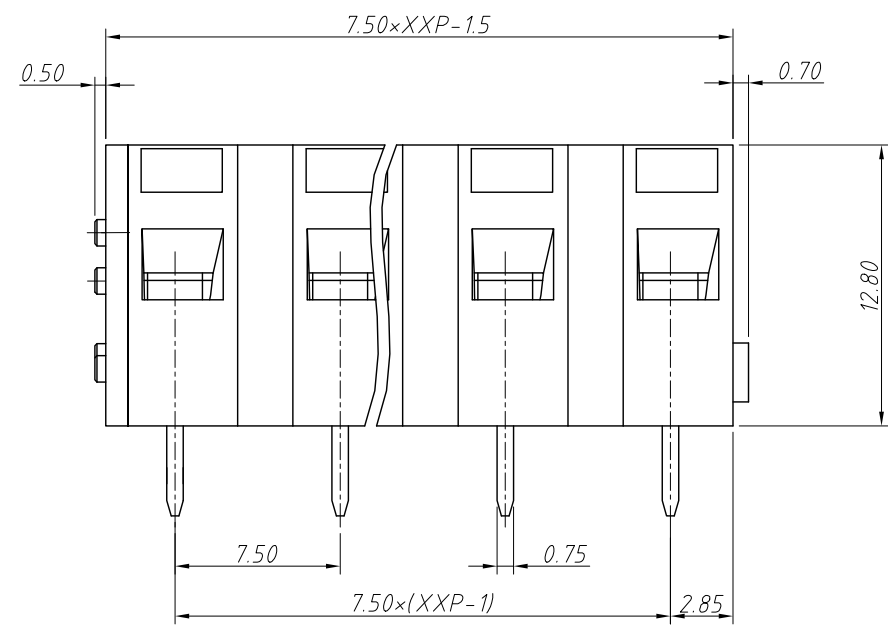
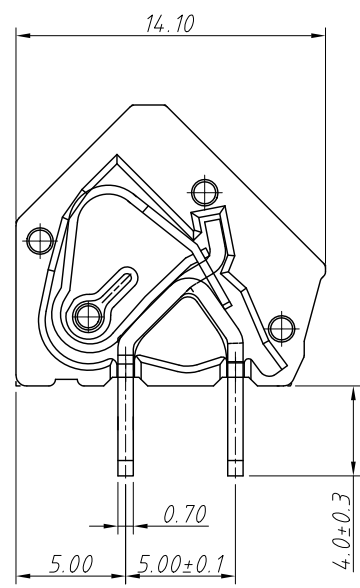
Recommended PCB Layout

Electrical Characteristics	UL	IEC
Rated Voltage	300V	450V
Rated Current	10A	15A
Withstand Voltage	AC2000V/1 min	---
Wire Range	26~14 AWG	1.5mm <sup>2</sup>

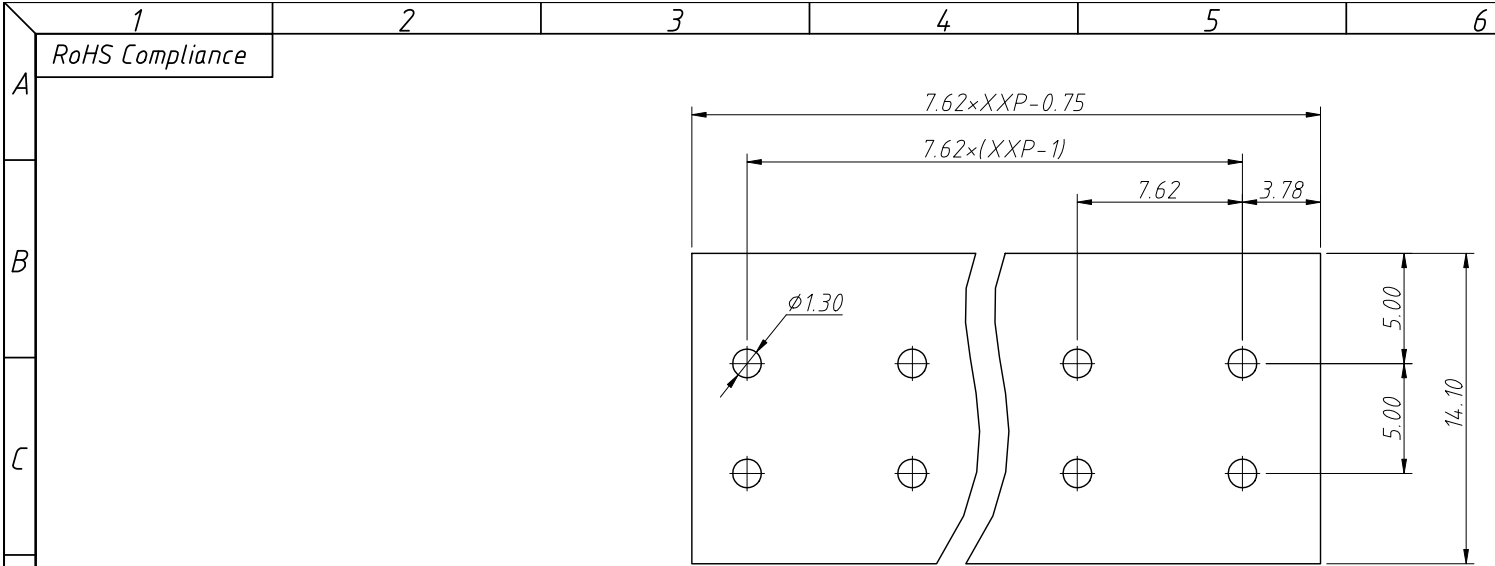
**Material and other:**  
Housing:PA66, UL94V-0  
Pin Header:Brass,Tin Plated  
Wire Guard:Stainless Steel  
Contact Resistance:20mΩ  
Insulation Resistance:500MΩ/DC500V  
Stripping Length:5~6mm  
Temp. Range:-40°C ~ +105°C  
MAX Soldering:250°C±5°C for 5S

**Order Information**  
L-KLS2-206-7.50-XXP-X

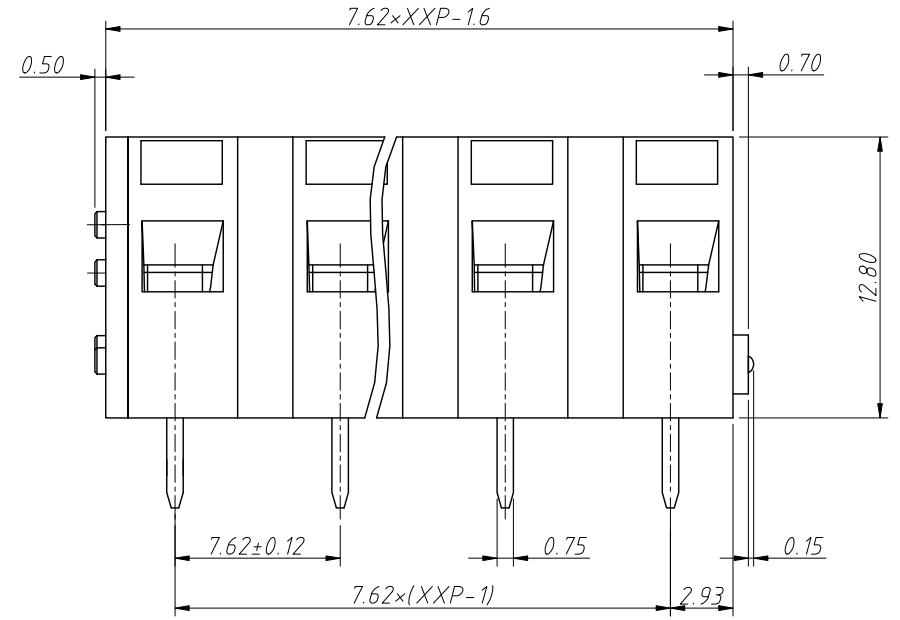
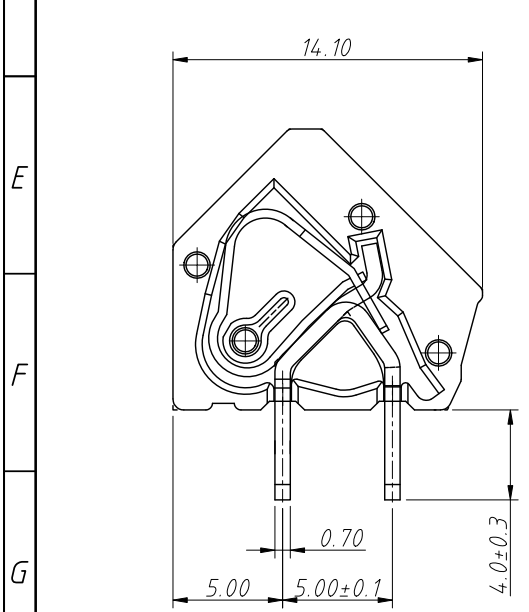
RoHS  
Terminal Block  
Pitch:7.50mm  
No.:Of (02~24) Pins  
Color:1=Gray 2=Blue 3=Black  
4=Green 5=Orange 6=Red  
7=Transp 8=Yellow 9=White



ANGLE TOLERANCE	PROJECTION	Description:
±3°		7.50mm Spring Terminal Blocks
GENERAL TOLERANCE	UNITS	mm
0~30 ±0.50	SHEET SIZE	A4
30~60 ±0.75	Draw:	Song
60~90 ±1.00	Check:	Daniel
		2024-08-22
		2024-08-22
		L-KLS2-206-7.50-XXP-X
		NingBo KLS ELECTRONIC CO.,LTD.



Recommended PCB Layout



REV	SYM	Revision Record	Appr.	Date
V0	KLS02006	New Version Release	Song	2024-08-22

Electrical Characteristics	UL	IEC
Rated Voltage	300V	450V
Rated Current	10A	15A
Withstand Voltage	AC2000V/1 min	---
Wire Range	26~14 AWG	1.5mm <sup>2</sup>

Material and other:  
 Housing:PA66, UL94V-0  
 Pin Header:Brass,Tin Plated  
 Wire Guard:Stainless Steel  
 Contact Resistance:20m $\Omega$   
 Insulation Resistance:500M $\Omega$ /DC500V  
 Stripping Length:5~6mm  
 Temp. Range:-40°C ~ +105°C  
 MAX Soldering:250°C $\pm$ 5°C For 5S

Order Information  
**L-KLS2-206-7.62-XXP-X**  
 L-KLS2-206-7.62-XXP-X  
 RoHS  
 Terminal Block  
 Pitch:7.62mm  
 No.:Of Pins(2~24P)  
 Color:1=Gray 2=Blue 3=Black  
 4=Green 5=Orange 6=Red  
 7=Transp 8=Yellow 9=White

ANGLE TOLERANCE		PROJECTION		Description:	
$\pm 3^\circ$				7.62mm Spring Terminal Blocks	
GENERAL TOLERANCE		UNITS	mm	KLS P/N:	
0~30	$\pm 0.50$	SHEET SIZE	A4	L-KLS2-206-7.62-XXP-X	
30~60	$\pm 0.75$	Draw:	Song	2024-08-22	
60~90	$\pm 1.00$	Check:	Daniel	2024-08-22	

**KLS** NingBo KLS ELECTRONIC CO.,L TD.