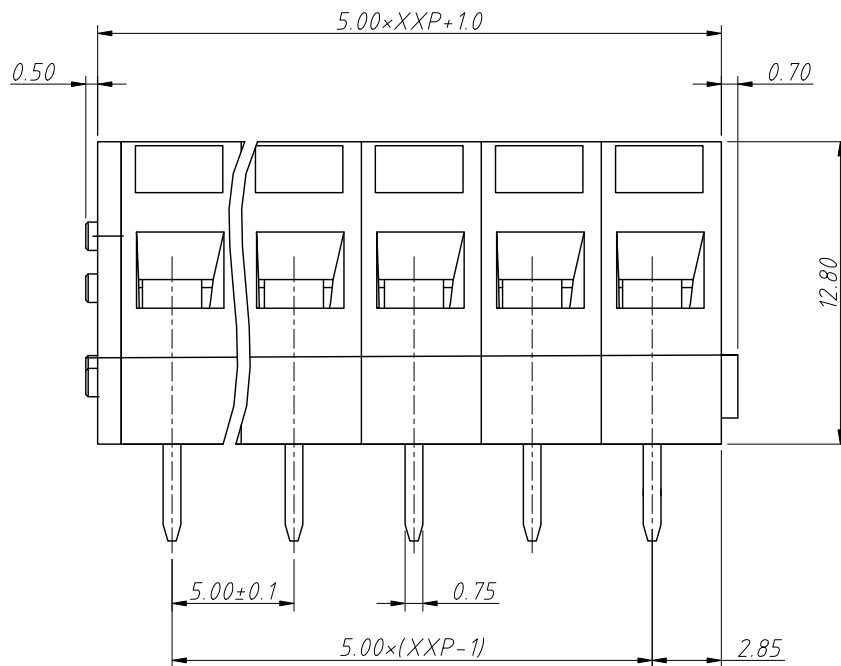
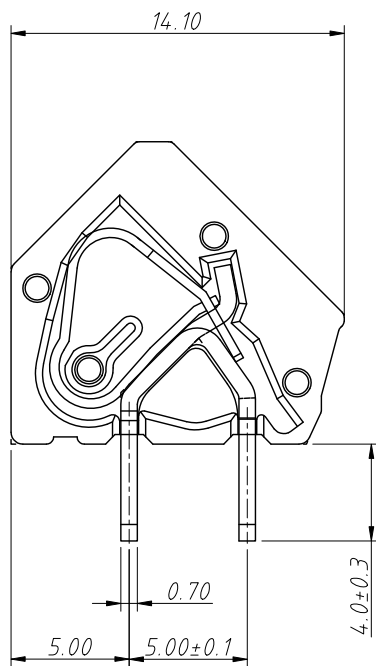
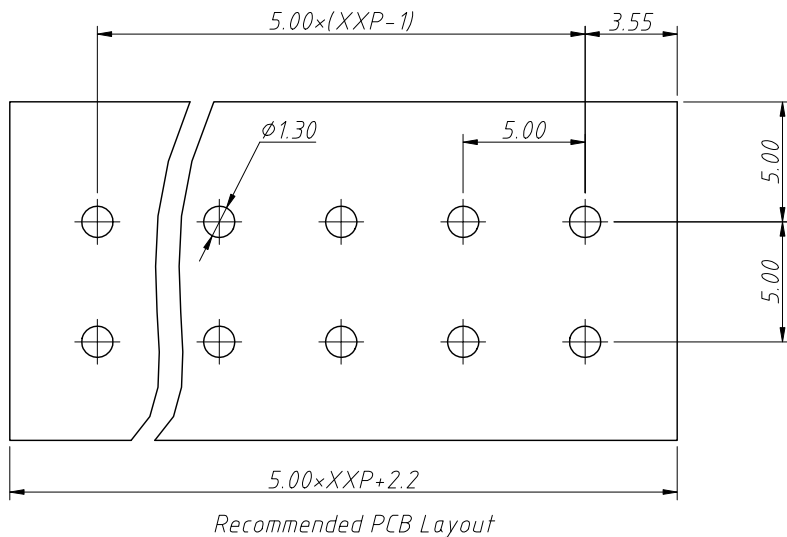


1 RoHS Compliance



6	7	8
REV	SYM	Revision Record
V0	KLS02006	New Version Release
		Appr. Date
		Song 2024-08-20

Electrical Characteristics	UL	IEC
Rated Voltage	300V	450V
Rated Current	10A	15A
Withstand Voltage	AC2000V/1min	---
Wire Range	26~14 AWG	1.5mm ²

Material and other:

Housing:PA66, UL94V-0

Pin Header:Brass,Tin Plated

Wire Guard:Stainless Steel

Contact Resistance:20m Ω

Insulation Resistance:500M Ω /DC500V

Stripping Length:5~6mm

Temp. Range:-40°C ~ +105°C

MAX Soldering:250°C±5°C for 5S

Order Information

L-KLS2-206-5.00-XXP-X

RoHS

Terminal Block

Pitch:5.00mm

No.:Of Pins(1~24P)

Color:1=Gray 2=Blue 3=Black

4=Green 5=Orange 6=Red

7=Transp 8=Yellow 9=White

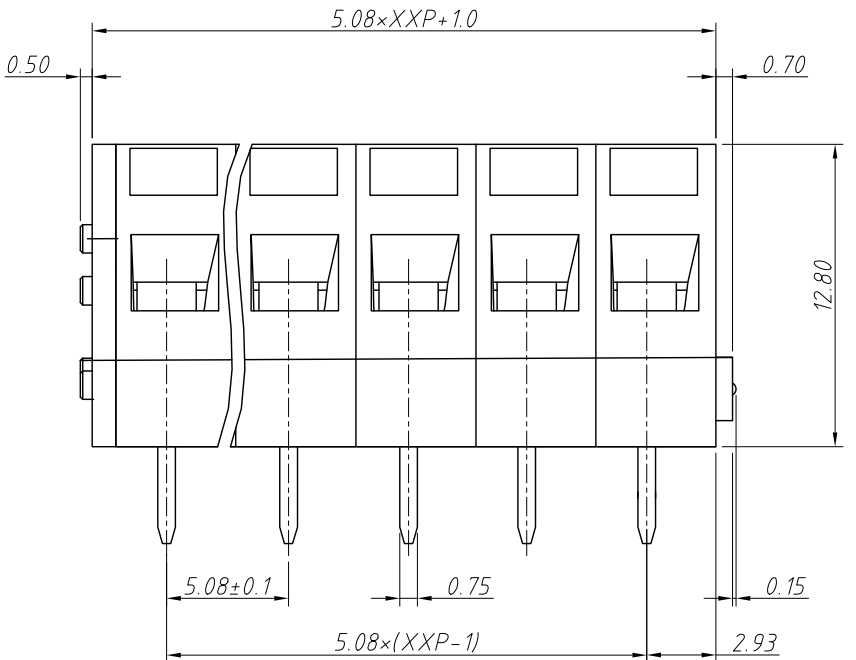
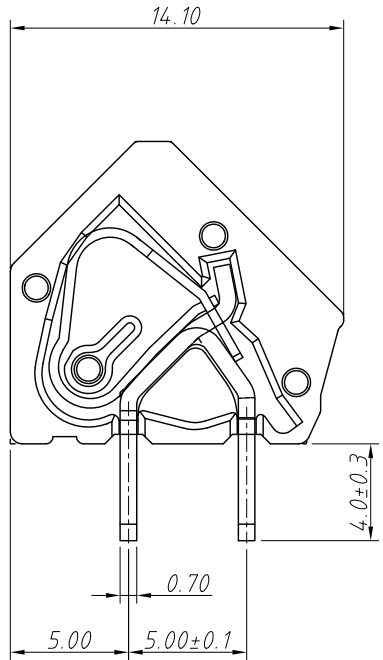
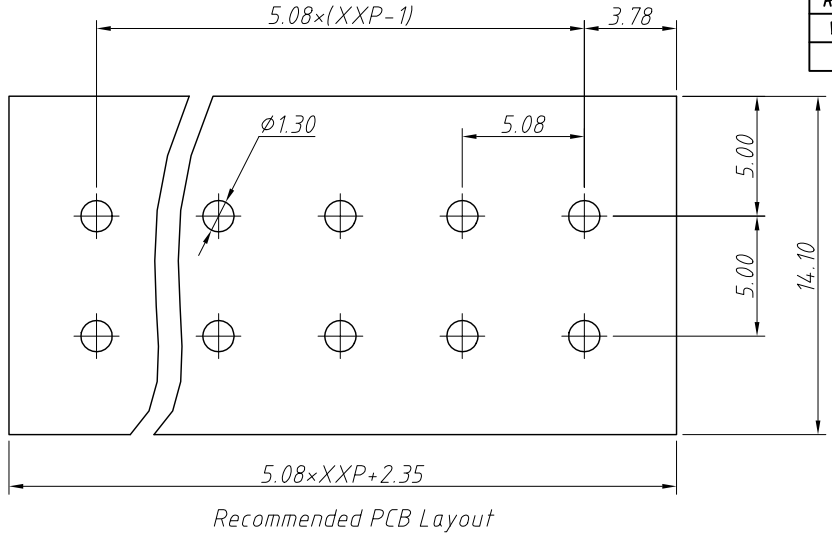
ANGLE TOLERANCE	PROJECTION	Description:
$\pm 3^\circ$		5.00mm Spring Terminal Blocks
GENERAL TOLERANCE	UNITS	mm
0~30	± 0.50	KLS P/N:
30~60	± 0.75	L-KLS2-206-5.00-XXP-X
60~90	± 1.00	Draw: Song
	Check: Daniel	2024-08-20



NingBo KLS ELECTRONIC CO.,LTD.

1
RoHS Compliance

A
B
C
D
E
F
G
H



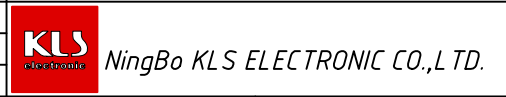
REV	SYM	Revision Record	Appr.	Date
V0	KLS02006	New Version Release	Song	2024-08-20

Electrical Characteristics	UL	IEC
Rated Voltage	300V	250V
Rated Current	10A	15A
Withstand Voltage	AC2000V/1min	---
Wire Range	26~14 AWG	1.5mm ²

Material and other:
 Housing:PA66, UL94V-0
 Pin Header:Brass,Tin Plated
 Wire Guard:Stainless Steel
 Contact Resistance:20m Ω
 Insulation Resistance:500M Ω /DC500V
 Stripping Length:5~6mm
 Temp. Range:-40°C ~ +105°C
 MAX Soldering:250°C±5°C for 5S

Order Information
 L-KLS2-206-5.08-XXP-X
 RoHS
 Terminal Block
 Pitch:5.08mm
 No.:Of (1~24) Pins
 Color:1=Gray 2=Blue 3=Black
 4=Green 5=Orange 6=Red
 7=Transp 8=Yellow 9=White

ANGLE TOLERANCE	PROJECTION	Description:
±3°		5.08mm Spring Terminal Blocks
GENERAL TOLERANCE	UNITS	mm
0~30	±0.50	KLS P/N:
30~60	±0.75	SHEET SIZE
60~90	±1.00	A4
	Draw:	Song
	Check:	Daniel
		2024-08-20
		2024-08-20



1 2 3 4 5 6 7 8