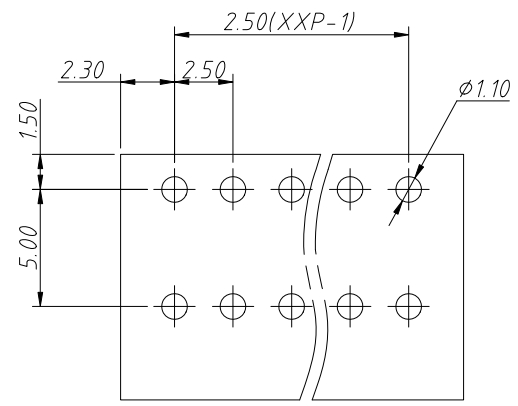
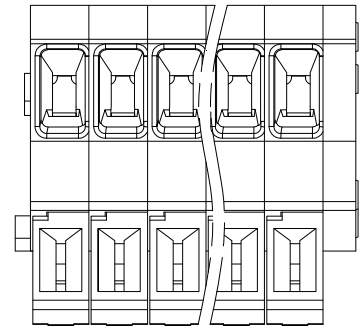


1
RoHS Compliance

6		7		8	
REV	SYM	Revision Record		Appr.	Date
V0	KLS02006	New Version Release		Song	2024-08-28

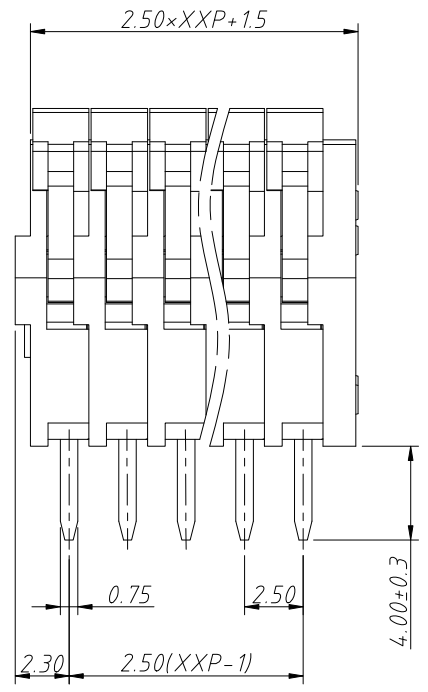
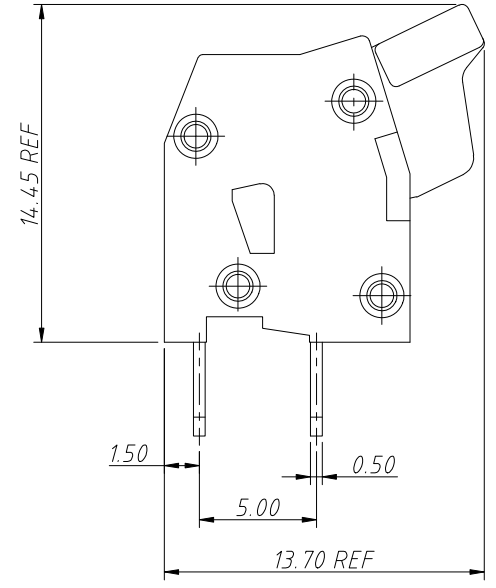


Recommended PCB Layout



Electrical Characteristics	UL	IEC
Rated Voltage	150V	63V
Rated Current	4A	6A
Withstand Voltage	1300V/1 min	2.5KV
Wire Range	28~20AWG	0.2~0.5mm ²

Material and other:
 Housing:PA66,UL 94V-0
 Pin Header:Coppo Alloy,Sn Plated
 Stripping Length:5~6mm
 Temp. Range:-40°C ~+105°C



Order Information
 L-KLS2-242V-2.50-XXP-1

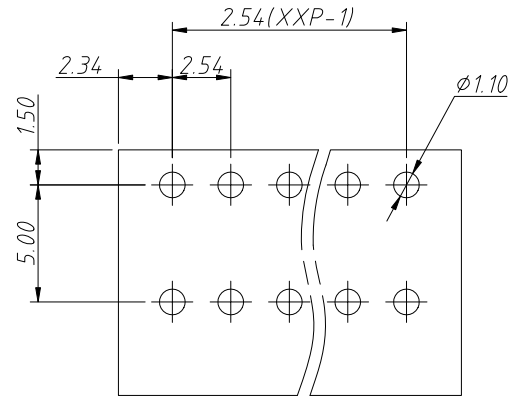
RoHS
 Terminal Block
 Pitch:2.50mm
 No.:Of Pins(01~30)
 Color:1=Gray 2=Blue 3=Black
 4=Green 5=Orange 6=Red
 7=Transp 8=Yellow 9=White

ANGLE TOLERANCE	PROJECTION	Description:			
±3°		2.50mm Spring Terminal Blocks			
GENERAL TOLERANCE	UNITS	mm	KLS P/N:	L-KLS2-242V-2.50-XXP-X	
0~30	±0.50	SHEET SIZE	A4		
30~60	±0.75	Draw:	Song	2024-08-28	
60~90	±1.00	Check:	Daniel	2024-08-28	

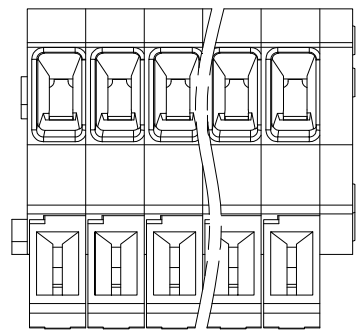
NingBo KLS ELECTRONIC CO.,LTD.

1
RoHS Compliance

6		7		8	
REV	SYM	Revision Record		Appr.	Date
V0	KLS02006	New Version Release		Song	2024-08-28

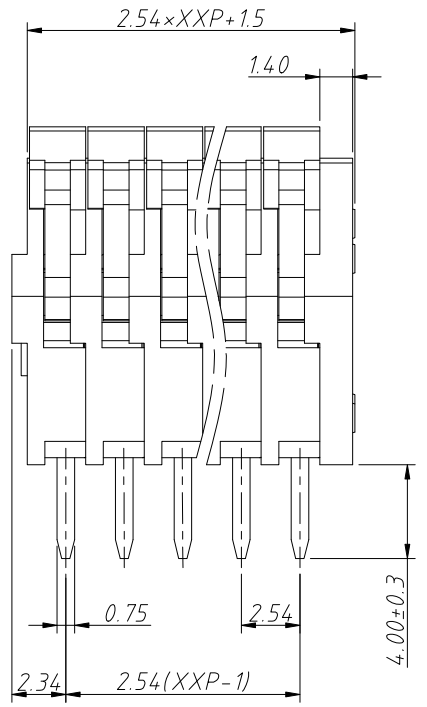
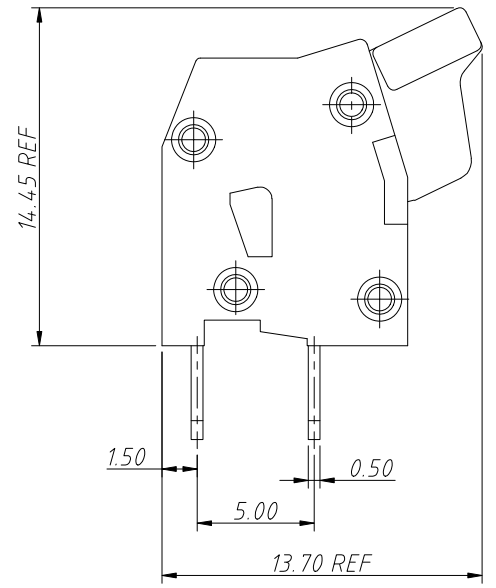


Recommended PCB Layout



Electrical Characteristics	UL	IEC
Rated Voltage	150V	63V
Rated Current	4A	6A
Withstand Voltage	1300V/1 min	2.5KV
Wire Range	28~20AWG	0.2~0.5mm ²

Material and other:
 Housing:PA66,UL 94V-0
 Pin Header:Coppo Alloy,Sn Plated
 Stripping Length:5~6mm
 Temp. Range:-40°C ~+105°C



Order Information
 L-KLS2-242V-2.54-XXP-4

RoHS
 Terminal Block
 Pitch:2.54mm
 No.:Of Pins(01~30)
 Color:1=Gray 2=Blue 3=Black
 4=Green 5=Orange 6=Red
 7=Transp 8=Yellow 9=White

ANGLE TOLERANCE	PROJECTION	Description:			
±3°		2.54mm Spring Terminal Blocks			
GENERAL TOLERANCE	UNITS	mm	KLS P/N:	L-KLS2-242V-2.54-XXP-X	
0~30	±0.50	SHEET SIZE	A4		
30~60	±0.75	Draw:	Song	2024-08-28	
60~90	±1.00	Check:	Daniel	2024-08-28	

NingBo KLS ELECTRONIC CO.,L TD.