

Material
Housing: LCP, UL 94V-0
Pin header: Copper Alloy, Sn plated

Electrical
Rated voltage: 300V
Rated current: 10A
Withstand voltage: AC1600V / 1 min

Mechanical :
Wire Range: 16-24 AWG
Stripping Length: 7-8mm
Temp. Range: -40°C ~ +130°C
Soldering temperature: 285°C/10s
Pin Dimensions: 0.8x0.4 mm
PCB Hole Dimensions: $\phi 1.2\text{mm}$

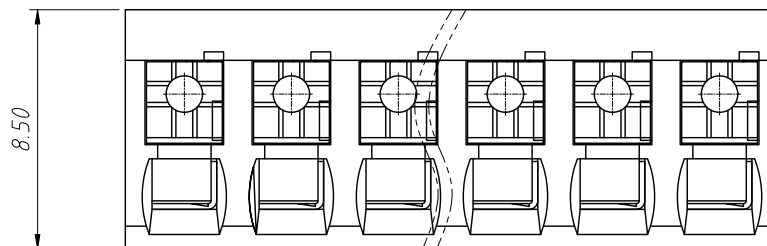
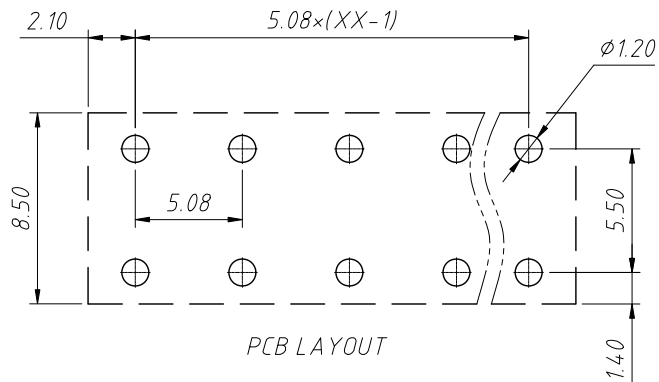
Order Information

L-KLS2-212V-5.00-XXP-3

RoHS
Terminal Block
Pitch: 5.00mm
No.: of 02 ~ 24 Pole
Color: 3-Black

GENERAL TOLERANCE		ANGLE TOLERANCE		Description:	
X. ± 0.60		X. $\pm 5^\circ$		Terminal Block 5.00 mm thermostability	
.X ± 0.38		.X $\pm 3^\circ$			
.XX ± 0.25		.XX $\pm 2^\circ$		KLS P/N:	L-KLS2-212V-5.00-XXP-3
Draw by	2023-02-24	PROJECTION			NingBo KLS ELECTRONIC CO.,L TD.
Check by	2023-02-24	UNITS	mm		
SCALE		SHEET SIZE	A4		

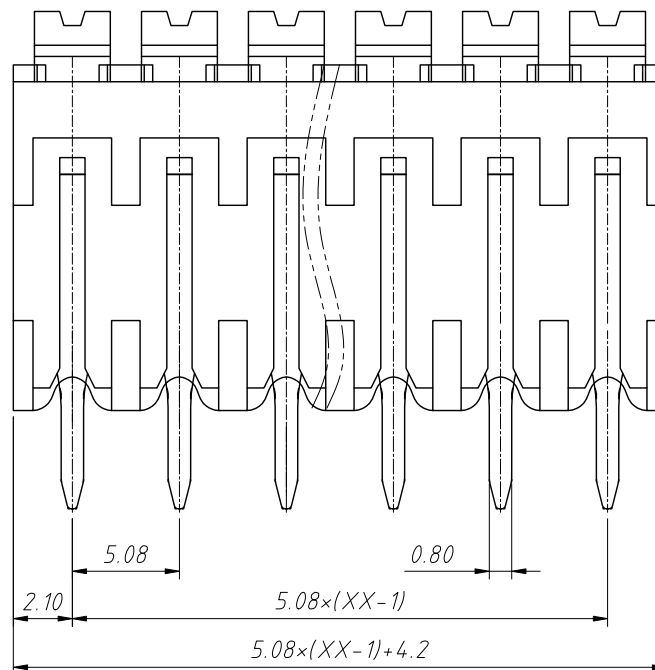
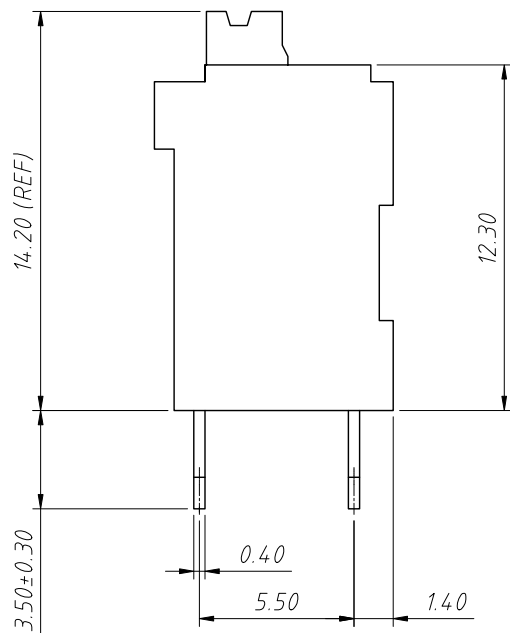
RoHS Compliance



Material:
 Insulation: LCP, UL94V-0
 Contactor: Copper alloy, Sn plated

Electrical:
 Rated Voltage: 300V
 Rated Current: 10A
 Withstanding Voltage: 1600VAC(1min)

Mechanical:
 Stripping Length: 7-8mm
 Pin Dimensions: 0.8x0.4mm
 PCB Hole Diameter: $\phi 1.2$ mm
 Soldering Temperature: 285°C/10S
 Operating temperature: -40°C to +130°C



Order Information:
 L-KLS2-212V-5.08-XXP-X

L: RoHS
 Terminal Block
 Pitch: 5.08mm
 No.: of 02 ~ 24 Pole
 Color:
 1=Gray 2=Blue 3=Black
 4=Green 5=Orange 6=Red
 7=Transp 8=Yellow 9=White

ANGLE TOLERANCE	PROJECTION	Description:
$\pm 3^\circ$		5.08mm PCB Spring Terminal Block
GENERAL TOLERANCE	UNITS	mm
x.x ± 0.30	SHEET SIZE	A4
x.xx ± 0.20	Draw:	Daniel 2023-05-05
x.xxx ± 0.10	Check:	Daniel 2023-05-05
		KLS P/N: L-KLS2-212V-5.08-XXP-X



NingBo KLS ELECTRONIC CO.,L TD.