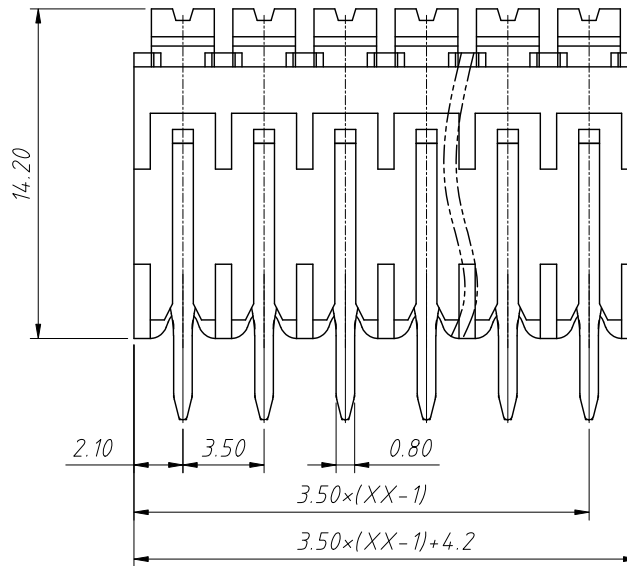
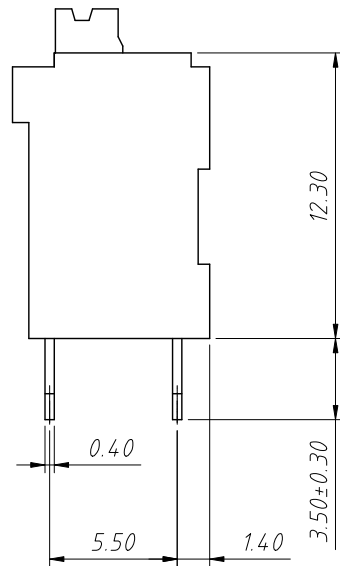


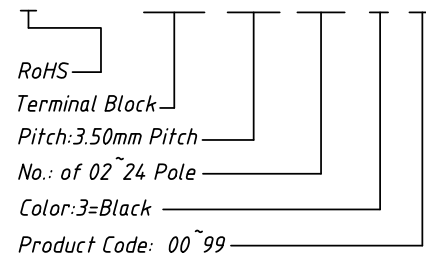
Material  
Housing: LCP, UL 94V-0  
Pin header: Copper alloy, Sn plated

Electrical  
Rated voltage: 300V  
Rated current: 10A  
Solid / Stranded: 16 ~ 24 AWG  
Withstanding Voltage: 1600V/Min

Mechanical :  
Stripping Length: 7 ~ 8mm  
Temp. Range: -40°C ~ + 130°C  
Soldering temperature: 285°C/10S  
Pin Dimensions: 0.8x0.4 mm  
PCB Hole Dimensions: phi 1.2mm

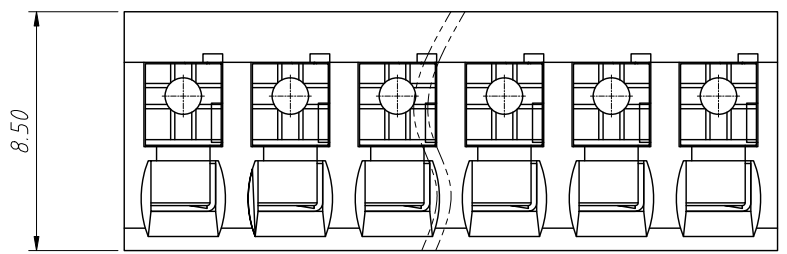
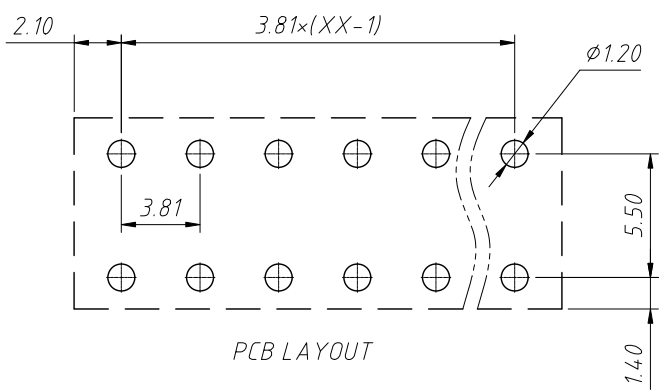


Order Information  
L-KLS2-212V-3.50-XXP-3 00



GENERAL TOLERANCE		ANGLE TOLERANCE		Description:	
X. ±0.60		X. ±5°		Pluggable Terminal Block 3.50 MM	
.X ±0.38		.X ±3°			
.XX ±0.25		.XX ±2°			
Draw by	2022-11-07	PROJECTION		KLS P/N:	L-KLS2-212V-3.50-XXP-3
Check by	2022-11-07	UNITS	mm		NingBo KLS ELECTRONIC CO.,L TD.
SCALE		SHEET SIZE	A4		

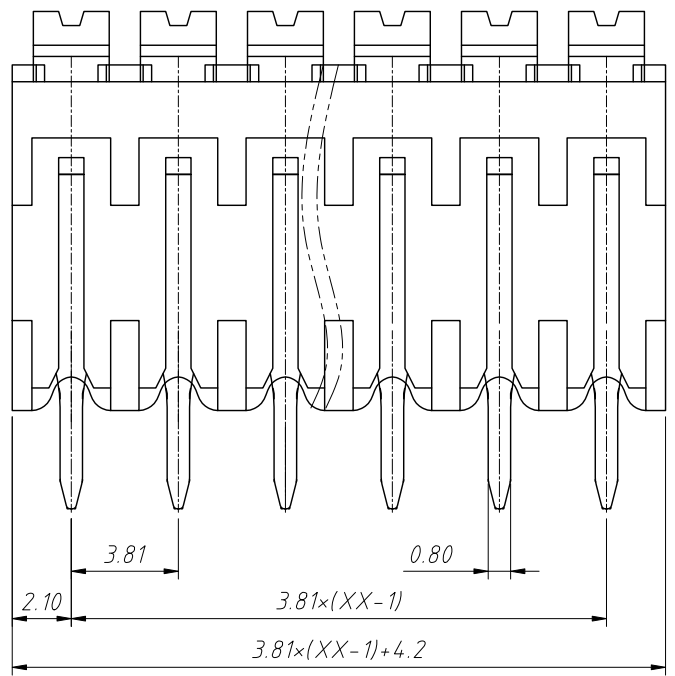
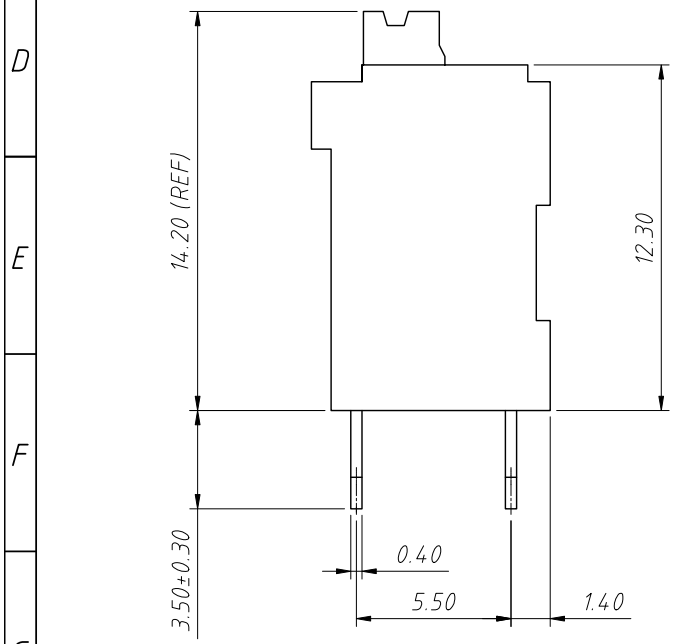
1  
RoHS Compliance



Material:  
Insulation:LCP,UL94V-0  
Contactor:Copper alloy,Sn plated

Electrical:  
Rated Voltage:300V  
Rated Current:10A  
Withstanding Voltage:1600VAC(1min)

Mechanical:  
Stripping Length:7-8mm  
Pin Dimensions:0.8x0.4mm  
PCB Hole Diameter:φ1.2mm  
Soldering Temperature:285°C/10S  
Operating temperature:-40°C to +130°C



Order Information:  
L-KLS2-212V-3.81-XXP-X  
L: RoHS  
Terminal Block  
Pitch:3.81mm  
No.: of 02 ~ 24 Pole  
Color:  
1=Gray 2=Blue 3=Black  
4=Green 5=Orange 6=Red  
7=Transp 8=Yellow 9=White

ANGLE TOLERANCE	PROJECTION	Description:	
±3°		3.81mm PCB Spring Terminal Block	
GENERAL TOLERANCE	UNITS	mm	KLS P/N:
x.x ±0.30	SHEET SIZE	A4	L-KLS2-212V-3.81-XXP-X
x.xx ±0.20	Draw:	Daniel	2023-05-05
x.xxx ±0.10	Check:	Daniel	2023-05-05

