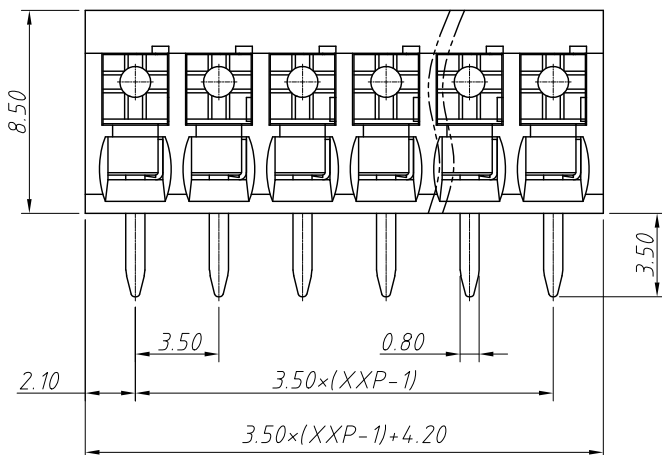
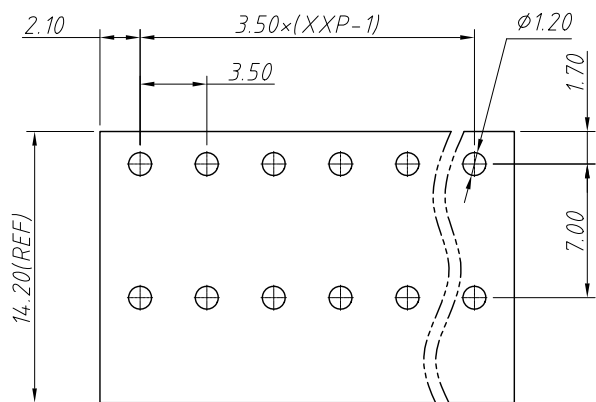


1 RoHS Compliance

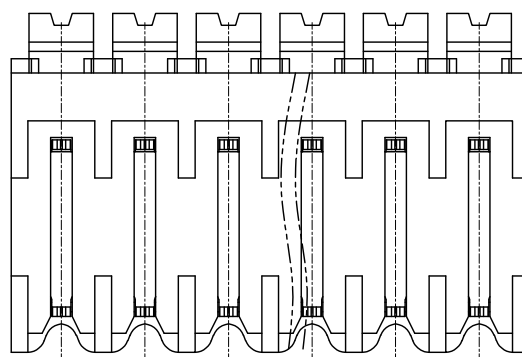
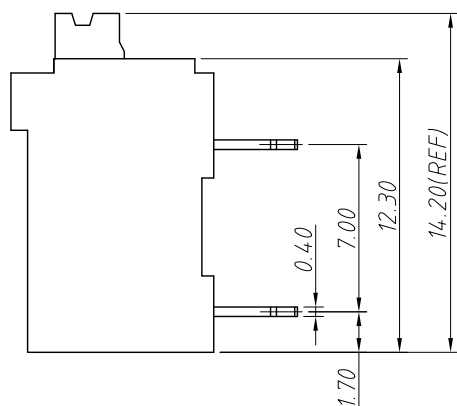
REV	SYM	Revision Record	Appr.	Date
V0	KLS02006	New Version Release	Yi	2024-05-21
V1	KLS02006	Technology Improvement	WuHao	2024-10-24

Electrical Characteristics	UL	IEC
Rated Voltage	300V	160V
Rated Current	10A	17.5A
Withstand Voltage	1600V/1 min	2.5 KV
Wire Range	16~24 AWG	0.2~1.5 mm <sup>2</sup>



Material  
 Housing:LCP, UL94 V-0  
 Contactor:Copper Alloy,Sn Plated

Electrical  
 Operation Temperature:-40 °C ~ + 130°C  
 Soldering Temperature:285°C /10S  
 Stripping Length:7~8 mm



Order Information

L-KLS2-212R-3.50-XXP-X

RoHS  
 Terminal Block  
 Pitch:3.50mm  
 No.: of (02~24) Pole  
 Color:  
 1=Gray 2=Blue 3=Black  
 4=Green 5=Orange 6=Red  
 7=Transp 8=Yellow 9=White

ANGLE TOLERANCE	PROJECTION	Description:
±3°		3.50mm Spring Terminal Blocks
GENERAL TOLERANCE	UNITS	mm
x.x ±0.30	SHEET SIZE	A4
x.xx ±0.20	Draw:	WuHao 2024-10-24
x.xxx ±0.10	Check:	Daniel 2024-10-24
KLS P/N:		L-KLS2-212R-3.50-XXP-X
KLS ELECTRONIC		NingBo KLS ELECTRONIC CO.,L TD.

RoHS Compliance

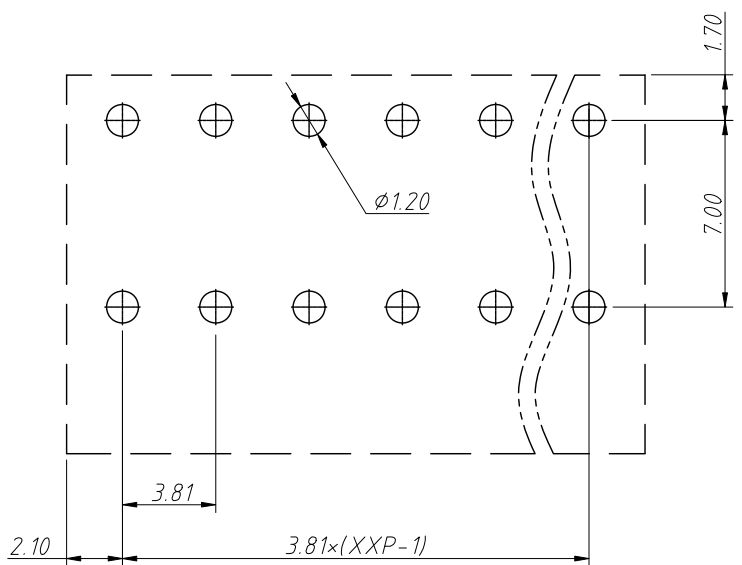
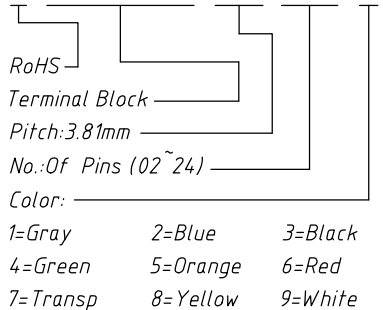
REV	SYM	Revision Record	Appr.	Date
V0	KLS02006	New Version Release	Song	2024-08-27

Electrical Characteristics	UL	IEC
Rated Voltage	300V	250V
Rated Current	10A	17.5A
Withstand Voltage	1600V / 1min	4.0KV
Wire Range	24 ~ 16 AWG	0.2 ~ 1.5mm <sup>2</sup>

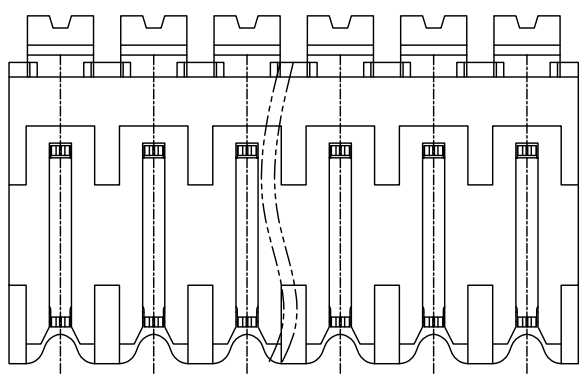
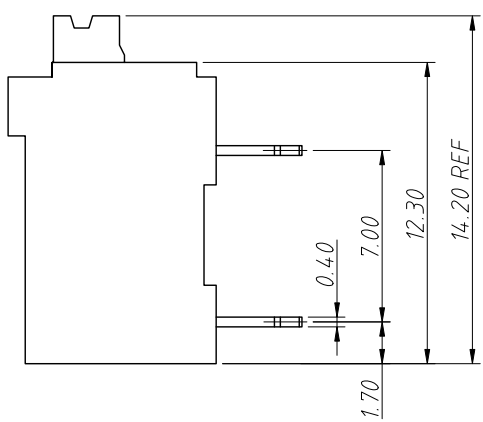
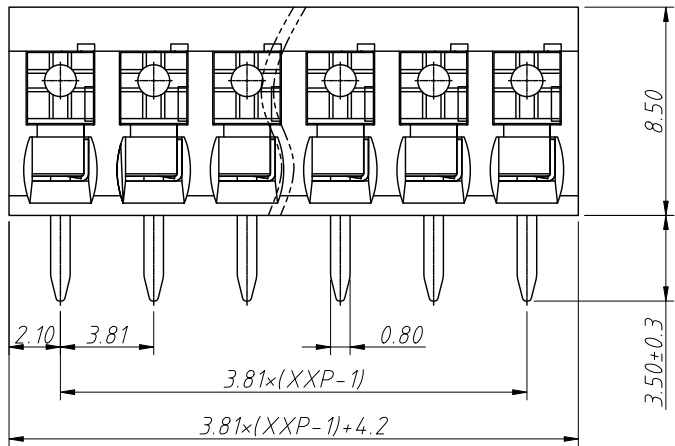
Material and other:  
 Housing: LCP, UL94V-0  
 Pin: Copper Alloy, Sn Plated  
 Stripping Length: 7 ~ 8mm  
 Operating Temperature: -40°C ~ +130°C  
 Soldering Temperature: 285°C / 10S

Order Information

L-KLS2-212R-3.81-XXP-X



Recommended PCB Layout



ANGLE TOLERANCE	PROJECTION	Description:		
±3°		3.81mm Spring Terminal Block		
GENERAL TOLERANCE	UNITS	mm	KLS P/N:	L-KLS2-212R-3.81-XXP-X
0 ~ 30	±0.50	SHEET SIZE	A4	
30 ~ 60	±0.75	Draw:	Song	2024-08-27
60 ~ 90	±1.00	Check:	Daniel	2024-08-27

