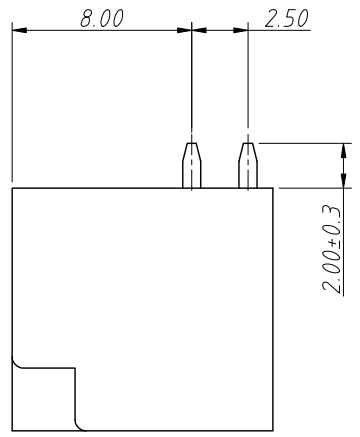
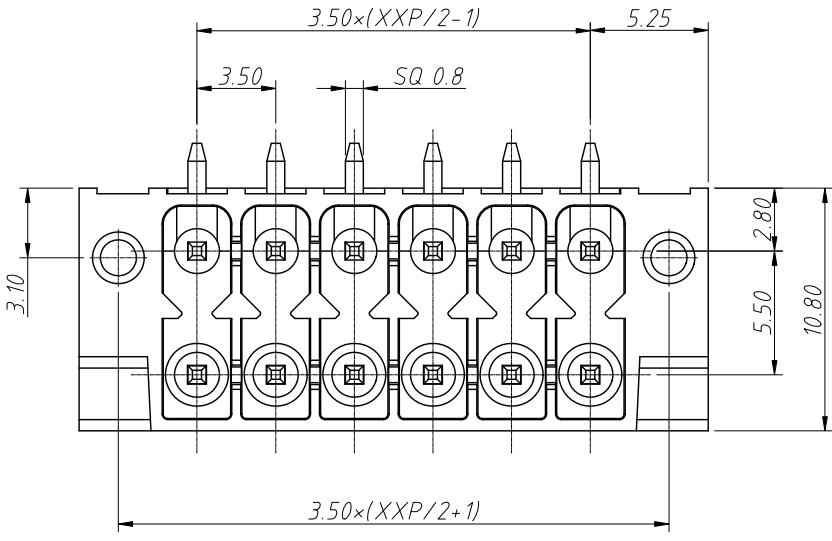


1 RoHS Compliance

6	7	8
REV	SYM	Revision Record
V0	KLS02006	New Version Release
		Appr. Song
		Date 2024-08-19

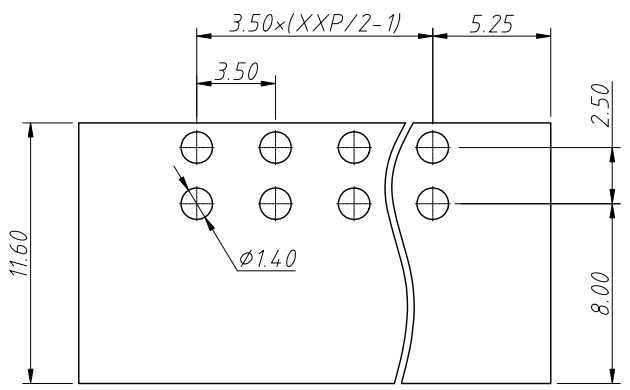
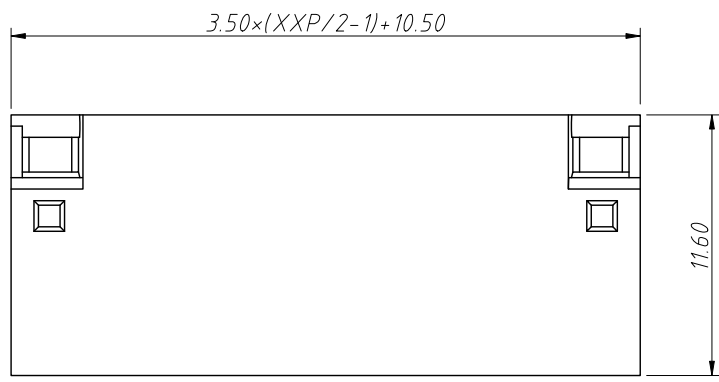


Electrical Characteristics	UL	IEC
Rated Voltage	150V	160V
Rated Current	8A	8A
Withstand Voltage	1300V / 1min	2.5KV

Material and other:  
 Housing: LCP, UL94V-0  
 Pin: Copper Alloy, Sn Plated  
 Operating Temperature: -40°C ~ +130°C

Order Information  
 L-KLS2-EDGRHCM-THR-3.50-16P-3

- RoHS
- Terminal Block
- Pitch: 3.50mm
- No.: Of (2x02 ~ 2x24) Pins
- Color:
  - 1=Gray
  - 2=Blue
  - 3=Black
  - 4=Green
  - 5=Orange
  - 6=Red
  - 7=Transp
  - 8=Yellow
  - 9=White



Recommended PCB Layout

ANGLE TOLERANCE	PROJECTION	Description:
±3°		Pitch 3.50mm Pluggable Terminal Block ,Socket
GENERAL TOLERANCE	UNITS	mm
.x ±0.30	SHEET SIZE	A4
.xx ±0.20	Draw:	Song
.xxx ±0.10	Check:	Daniel
KLS P/N:		L-KLS2-EDGRHCM-THR-3.50-16P-X
KLS ELECTRONIC		NingBo KLS ELECTRONIC CO.,L TD.

A  
B  
C  
D  
E  
F  
G  
H

A  
B  
C  
D  
E  
F  
G  
H

1 2 3 4 5 6 7 8