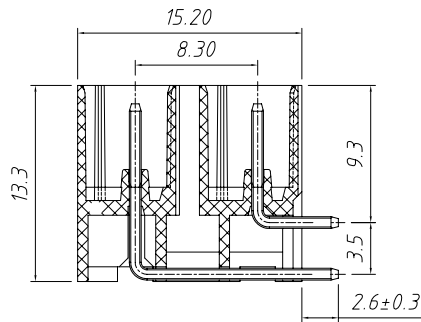


PCB LAYOUT



SECTION A-A

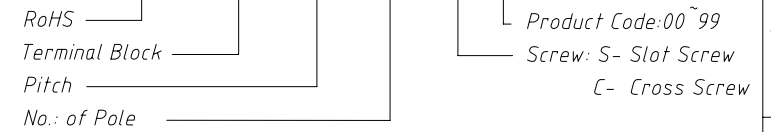
Material
 Pin header: Brass , Tin plated
 Housing: LCP , UL 94V-0,Black

Electrical
 Rated voltage: 300V
 Rated current: 8A
 Contact Resistance: 20 mΩ
 Insulation resistance: 500MΩ/DC500V
 Withstand voltage: AC2000V / 1 min

Mechanical
 Temp. Range: -40 °C ~ +130 °C
 Soldering: 285° C±5° C for 10S

Order Information

L-KLS2-THREDRN- 3.50-XXP-S XX



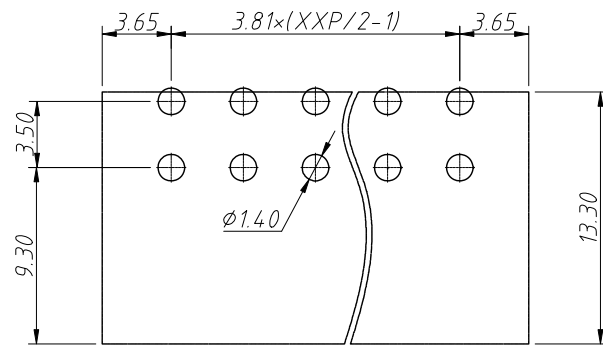
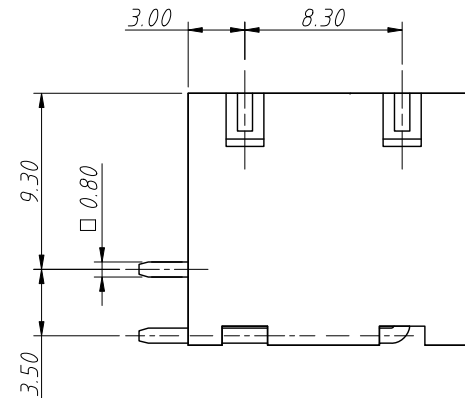
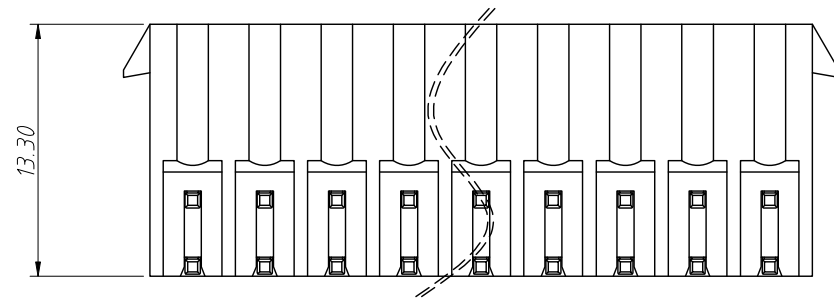
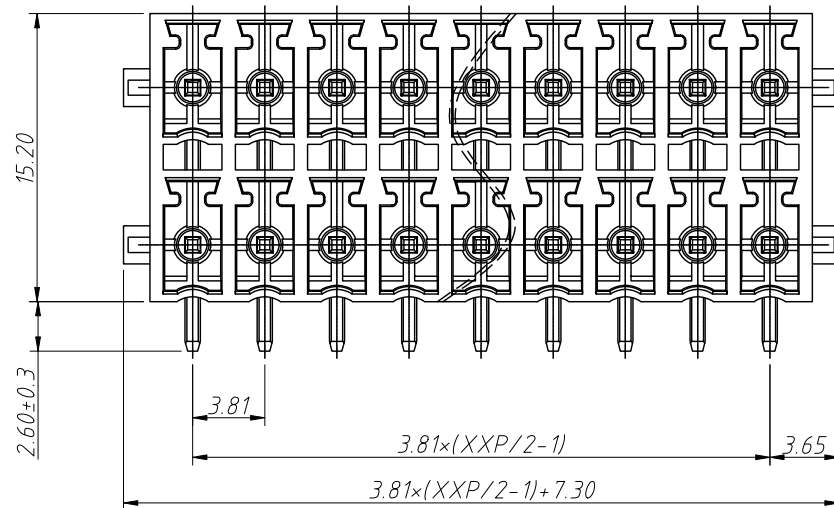
GENERAL TOLERANCE		ANGLE TOLERANCE		PROJECTION	Description:
X. ±0.60	X. ±5°	X. ±3°	X. ±2°	UNITS	Through hole reflow 3.50mm
.X ±0.38	.X ±3°	.XX ±2°	.XX ±2°	SHEET SIZE	
.XX ±0.25	.XX ±2°			KLS P/N:	KLS2-THREDRN-3.50-XXP-S

Draw by: Date	2015-09-01
Check by: Date	2015-09-15
SCALE	SHEET OF

KLS ELECTRONIC CO., LTD.

1 RoHS Compliance

REV	SYM	Revision Record	Appr.	Date
V0	KLS02006	New Version Release	Song	2024-10-23

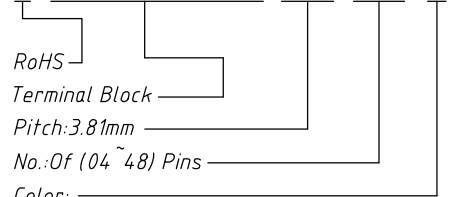


Recommended PCB Layout

Electrical Characteristics	UL	IEC
Rated Voltage	300V	160V
Rated Current	8A	8A
Withstand Voltage	1600V / 1min	2.5KV

Material and other:
 Housing:LCP, UL94V-0
 Pin:Copper Alloy,Sn Plated
 Operating Temperature:-40°C ~ +130°C
 Soldering Temperature:285°C /10S

Order Information
 L-KLS2-THREDRN-3.81-XXP-3



- Color:
- 1=Gray 2=Blue 3=Black
 - 4=Green 5=Orange 6=Red
 - 7=Transp 8=Yellow 9=White

ANGLE TOLERANCE	PROJECTION	Description:
±3°		Pitch 3.81mm Pluggable Terminal Block ,Socket
GENERAL TOLERANCE	UNITS	mm
0~30	±0.50	SHEET SIZE
30~60	±0.75	Draw:
60~90	±1.00	Check:
KLS P/N:		L-KLS2-THREDRN-3.81-XXP-X
KLS ELECTRONIC		NingBo KLS ELECTRONIC CO.,L TD.