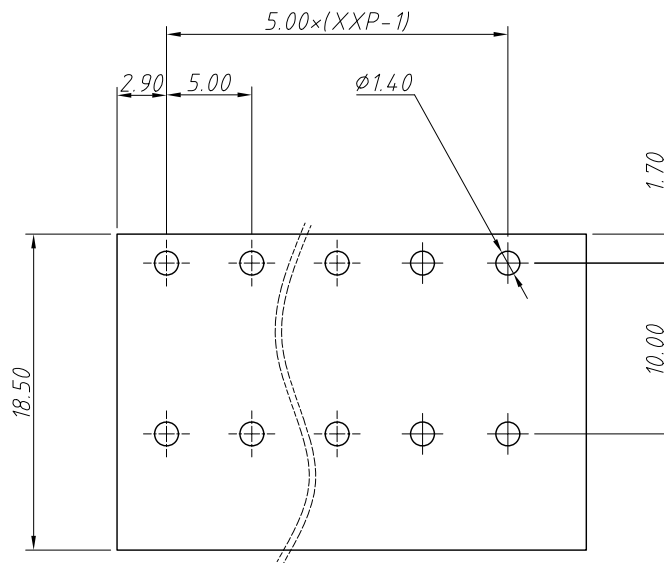
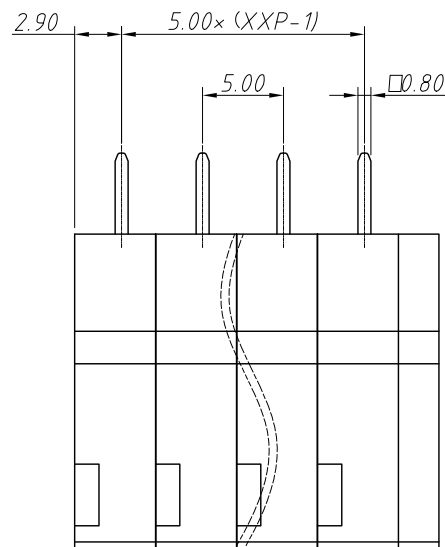
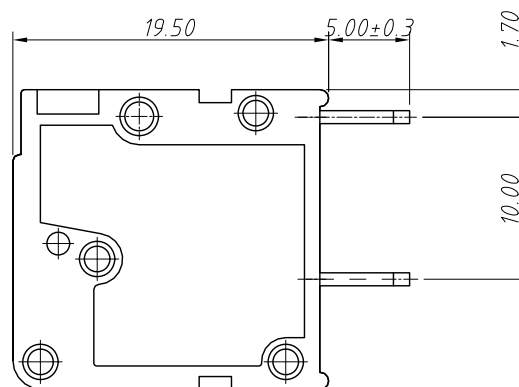
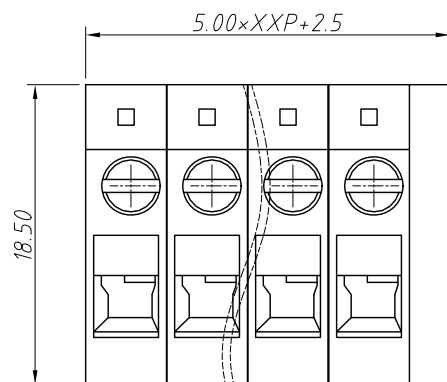


1 RoHS Compliance

REV	SYM	Revision Record	Appr.	Date
V0	KLS02006	New Version Release	WuHao	2024-09-19



Recommended PCB Layout



Electrical Characteristics	UL	IEC
Rated Voltage	300V	250V
Rated Current	20A	24A
Withstand Voltage	1600V/1 min	4.0KV
Wire Range	12~26 AWG	0.5-2.5mm ²

Material and other:

Housing: PA66, UL 94V-0

Pin header: Copper Alloy, Sn Plated

Screw/Torque: M2.5/0.4N.m Max.

Max Soldering: +260°C, for 5 Sec

Operating temperature: -40°C ~ +105°C

Order Information

L-KLS2-146VA-5.00-XXP-XX

RoHS

Terminal Block

Pitch: 5.00mm

No.: Of (01~30) Pin

Color:

1=Gray

2=Blue

3=Black

4=Green

5=Orange

6=Red

7=Transp

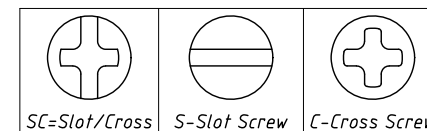
8=Yellow

9=White

Screw: SC=Slot/Cross

S-Slot Screw

C-Cross Screw



ANGLE TOLERANCE	PROJECTION	Description:
±3°		Pitch 5.00mm Screw fixation Terminal Block
GENERAL TOLERANCE	UNITS	mm
0~30	±0.50	
30~60	±0.75	
60~90	±1.00	
SHEET SIZE	A4	
Draw:	WuHao	2024-09-19
Check:	Daniel	2024-09-19
KLS ELECTRONIC		NingBo KLS ELECTRONIC CO.,LTD.