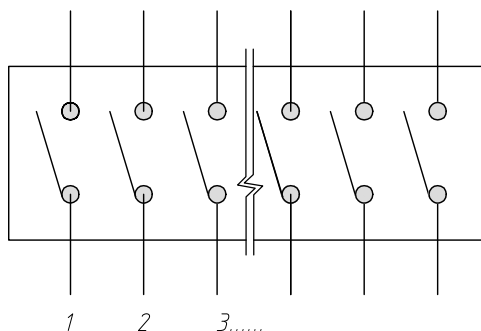
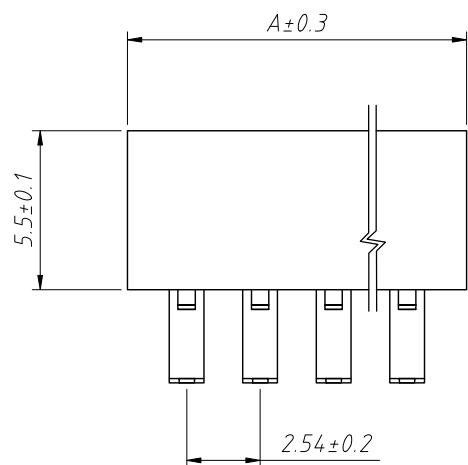
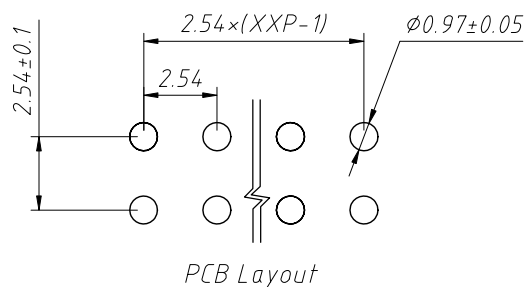
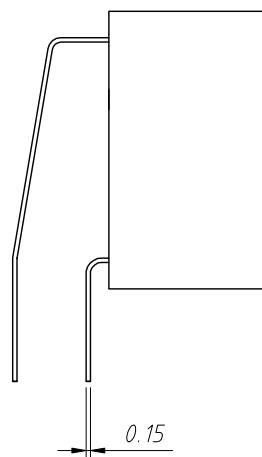
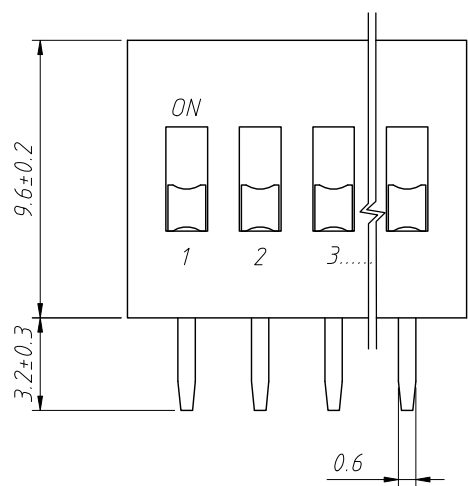


RoHS Compliance



Schematic



PCB Layout

**Material:**

- 1.Cover:PBT,UL94-V0 (red or blue or black)
- 2.Operator:PBT,UL94-V0 (black)
- 3.Static reed:Phosphor Copper,Gold plated or Half tin gold
- 4.Moving reed:Phosphor Copper,Gold plated or Half tin gold
- 5.Toggle lever:PBT,UL94-V0 (white)
- 6.Potting adhesive:Epoxy Resin

**Electrical Characteristics:**

- Switch Capacity:When switching 25mA at 24VDC  
When not switching 100mA at 50VDC
- Insulation Resistance:100M $\Omega$  at 500VDC
- Contact Resistance:Initial 50m $\Omega$  max.End-of-life value 100m $\Omega$  max.
- Insulation strength:500VAC 50Hz/1min
- Interpole capacitance:<5pf, 1MHz $\pm$ 10kHz
- Operation Force:1000gf max.
- Electrical life: 2000 times < 100m $\Omega$ @20times/min,25mA 24VDC
- Operation Temp:-20 $^{\circ}$ C ~ +85 $^{\circ}$ C

**Welding requirements:**

- Manual welding:320 degrees C no more than 2 seconds. (30 watt iron max.)
- Wave soldering:260 degrees C no more than 5 seconds, in the welding and cleaning process switch is open state.

Model No.	A
DART-01	4.10
DART-02	6.64
DART-03	9.18
DART-04	11.72
DART-05	14.26
DART-06	16.80
DART-07	19.34
DART-08	21.88
DART-09	24.42
DART-10	26.96
DART-12	32.04

ANGLE TOLERANCE		PROJECTION		Description:	
$\pm 3^{\circ}$				DIP Switch	
GENERAL TOLERANCE		UNITS	mm	KLS P/N:	
x.x $\pm 0.30$		SHEET SIZE	A4	L-KLS7-DART-XX	
x.xx $\pm 0.20$		Draw:	Daniel	2023-05-05	
x.xxx $\pm 0.10$		Check:	Daniel	2023-05-05	

NingBo KLS ELECTRONIC CO.,LTD.