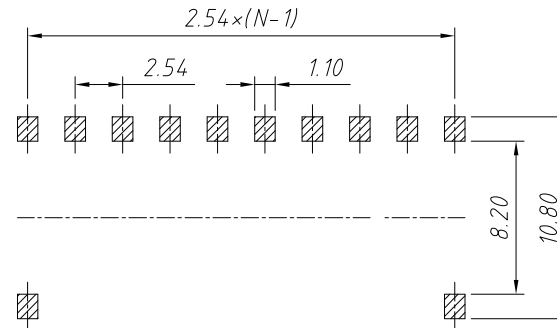
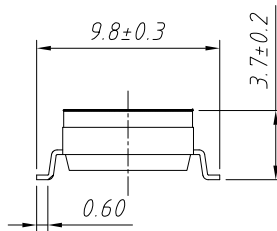
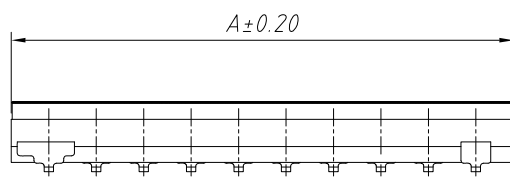


Specifications

Contact Rating: 25 mA at 24VDC (switching)
 100 mA at 50VDC (steady state)
 Life: 2,000 cycles
 Contact Resistance: 100mΩ Max.
 Insulation Resistance: 100MΩ at 100VDC Min
 Dielectric Strength: 300VAC Min

Materials

Base & Cover: PPS (UL 94V-0)
 Actuator: PA46 (UL 94V-0)
 Contacts: Brass, Gold / Tin Plate
 Terminals: Brass, Gold / Tin Plate
 Mylar: 0.05mm UL 94V-0 Mylar



POS.	Dimensions	
	A	B
4P	11.64	7.62
5P	14.18	10.16
8P	21.80	17.78
9P	24.34	20.32
10P	26.88	22.86

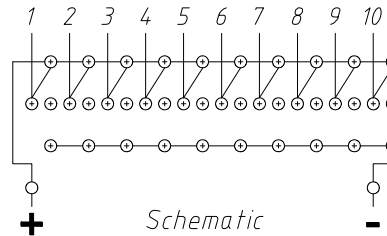
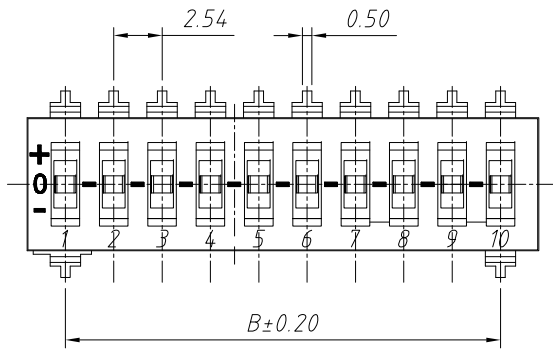
Order Information

L-KLS7-KM-XX-N-1-X

- Packaging: 0- Tube 1- Tape & Reel
- 1: With sealed 0: Non-sealed
- Color Code: N-Black
- Number of Pos.: 04 ~ 10 Pos
- EM: 2.54mm Tri-state DIP Switch SMD type
- EMR: 2.54mm Tri-state DIP Switch SMD type Recessed
- RoHS

Recommended PCB Layout (Top View)

GENERAL TOLERANCE	PROJECTION		Description:
X. ±0.50	UNITS	mm	2.54mm Tri-state DIP Switch SMD type
.X ±0.25	SCALE	1:1	
.XX ±0.10	Draw by:	Jenny	
ANGLE TOLERANCE	Check by:		KLS P/N: L-KLS7-EM
X. ±5°	Date	2018-03-01	NingBo KLS ELECTRONIC CO.,L TD.
.X ±3°	SHEET	1 OF 2	
.XX ±2°			

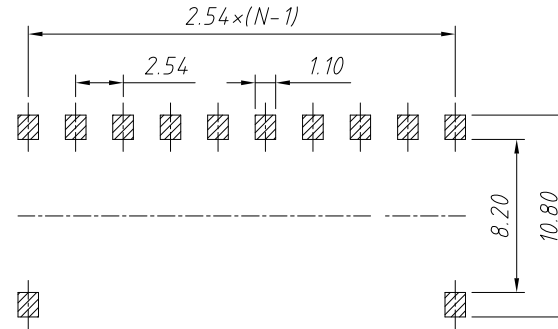
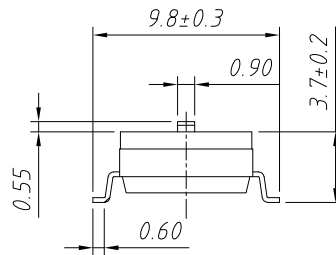
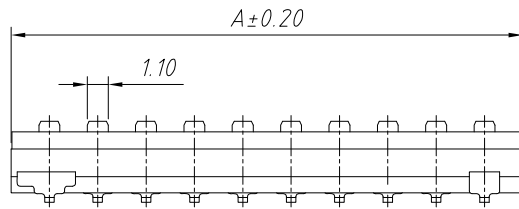


Specifications

Contact Rating: 25 mA at 24VDC (switching)
 100 mA at 50VDC (steady state)
 Life: 2,000 cycles
 Contact Resistance: 100mΩ Max.
 Insulation Resistance: 100MΩ at 100VDC Min
 Dielectric Strength: 300VAC Min

Materials

Base & Cover: PPS (UL 94V-0)
 Actuator: PA46 (UL 94V-0).
 Contacts: Brass, Gold / Tin Plate
 Terminals: Brass, Gold / Tin Plate
 Mylar: 0.05mm UL 94V-0 Mylar



POS.	Dimensions	
	A	B
4P	11.64	7.62
5P	14.18	10.16
8P	21.80	17.78
9P	24.34	20.32
10P	26.88	22.86

Order Information

L-KLS7-KM-XX-N-0-X

Packaging: 0- Tube 1- Tape & Reel

1: With sealed 0: Non-sealed

Color Code: N-Black

Number of Pos.: 04 ~ 10 Pos

EM: 2.54mm Tri-state DIP Switch SMD type

EMR: 2.54mm Tri-state DIP Switch SMD type Recessed

RoHS

GENERAL TOLERANCE	PROJECTION		Description:
X. ±0.50	UNITS	mm	2.54mm Tri-state DIP Switch SMD type
.X ±0.25	SCALE	1:1	
.XX ±0.10	Draw by:	Jenny	
ANGLE TOLERANCE	Check by:		KLS P/N: L-KLS7-EM
X. ±5°	Date	2018-03-01	NingBo KLS ELECTRONIC CO.,L TD.
.X ±3°	SHEET	1 OF 2	
.XX ±2°			