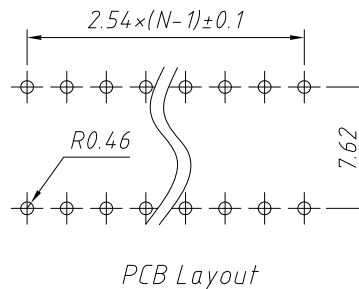
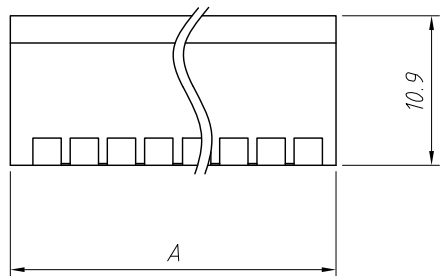


Switching Characteristics:
Mechanical life: 2000 operations per switch
Operation Force : 1000gf max.
Stroke: 2.0mm
Operation Temp: -20°C ~ +70°C
Electrical life: 2000 operations per switch-24 VDC 25mA
Contact Resistance: 50m max. at initial
Non-Switching Rating: 100mA, 50VDC
Switching Rating: 25mA, 24VDC
Circuit: Single pole single throw
Contact: Half Gold/Sn



Model No.	No.Pos.	A
DPTR-01	1	4.10
DPTR-02	2	6.64
DPTR-03	3	9.18
DPTR-04	4	11.72
DPTR-05	5	14.26
DPTR-06	6	16.80
DPTR-07	7	19.34
DPTR-08	8	21.88
DPTR-09	9	24.42
DPTR-10	10	26.96
DPTR-12	12	32.04

Order Information

L-KLS7-DPTR-XX-X-X-X

- Packaging: 0=Tube 1=Tape
- 0:Non-sealed 1:With sealed
- Color:R=Red,B=Blue,N=Black
- Number of Pos.: 01~12 Pos.
- Dip Switch
- RoHS

Soldering and Cleaning Processes

Keep all switch contacts in their "OFF" position for all operations

GENERAL TOLERANCE	PROJECTION		Description:
X. ±0.50	UNITS	mm	SPST Standard Piano Type Recessed
.X ±0.25	SCALE	1:1	
.XX ±0.10	Draw by:	Jenny	
ANGLE TOLERANCE	Check by:		KLS P/N: L-KLS7-DPTR
X. ±5°	Date	2018-03-01	NingBo KLS ELECTRONIC CO.,L TD.
.X ±3°	SHEET	1 OF 1	
.XX ±2°			