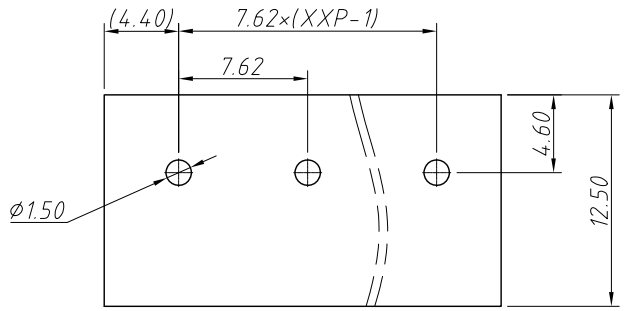
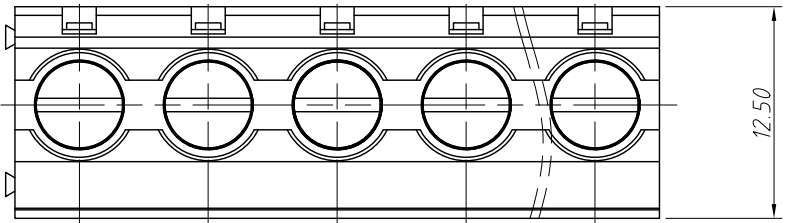


1
RoHS Compliance

6		7		8	
REV	SYM	Revision Record		Appr.	Date
V0	KLS02006	New Version Release		WuHao	2024-09-19



Recommended PCB Layout

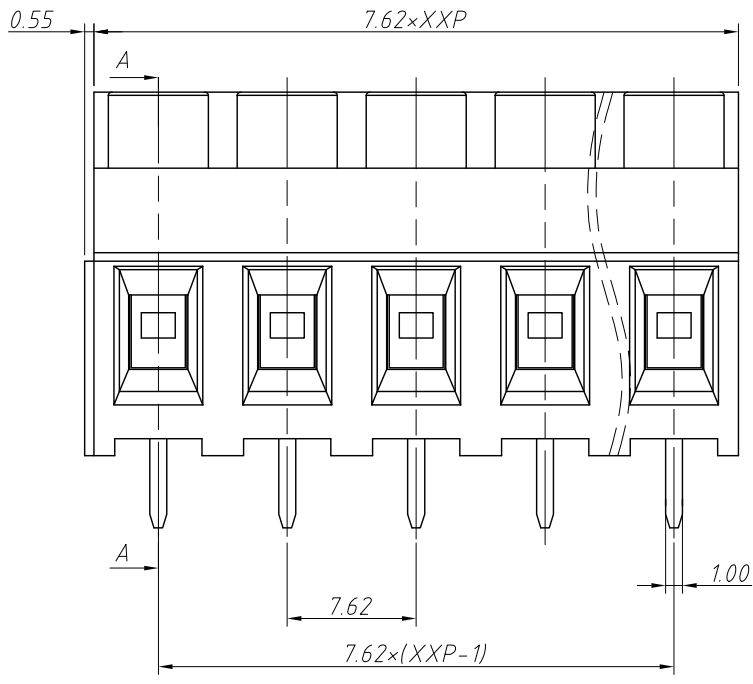
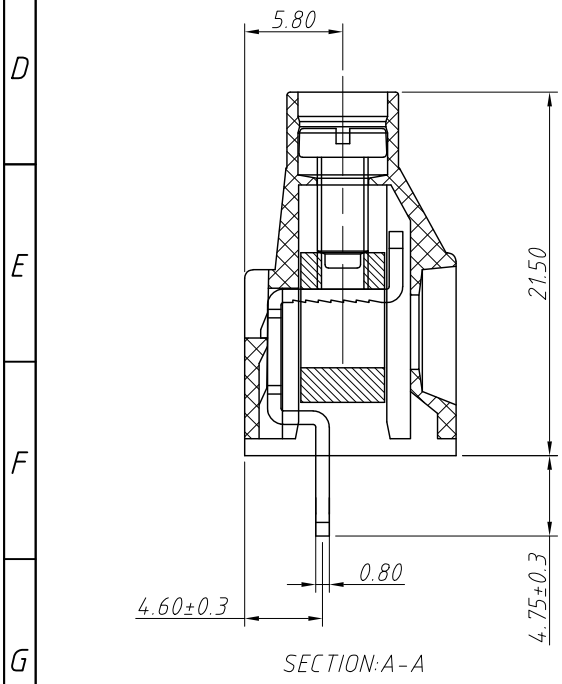
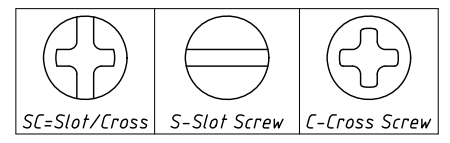


Electrical Characteristics	UL	IEC
Rated Voltage	300V	500V
Rated Current	30A	32A
Withstand Voltage	1600V / 1 min	6.0KV
Wire Range	10~26 AWG	0.5-4.0mm ²

Material and other:
Housing: PA66, UL94V-0
Pin header: Copper Alloy, Sn Plated
Screw/Torque: Steel, M3/0.5N.m Max.
Steip Length: 6-7mm
Operating temperatur: -40°C ~ +105°C

Order Information
L-KLS2-135-7.62-XXP-XX

RoHS
Terminal Block
Pitch: 7.62mm
No.: Of (02~24) Pin
Color:
1=Gray 2=Blue 3=Black
4=Green 5=Orange 6=Red
7=Transp 8=Yellow 9=White
Screw: SC=Slot/Cross
S-Slot Screw C-Cross Screw



ANGLE TOLERANCE	PROJECTION	Description:			
±3°		Pitch 7.62mm Screw fixation Terminal Block			
GENERAL TOLERANCE	UNITS	mm	KLS P/N:	L-KLS2-135-7.62-XXP-XX	
0~30	±0.50	SHEET SIZE	A4		
30~60	±0.75	Draw:	WuHao	2024-09-19	
60~90	±1.00	Check:	Daniel	2024-09-19	

NingBo KLS ELECTRONIC CO.,L TD.