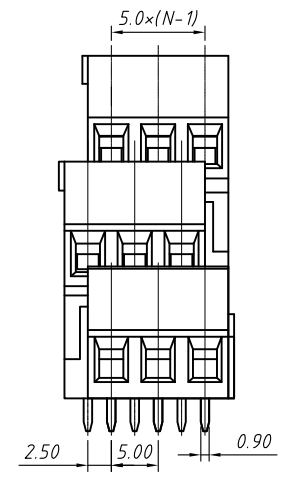
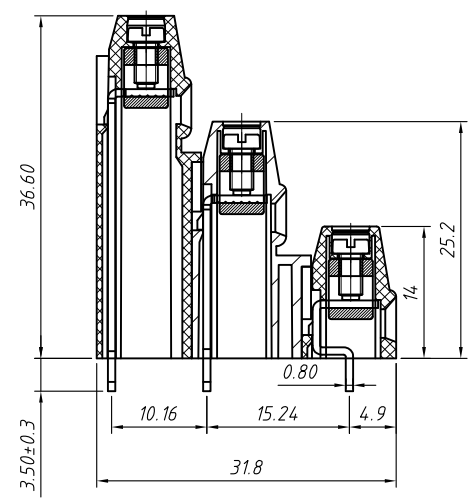
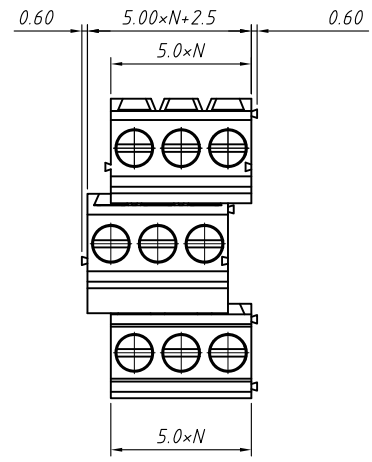


PCB LAYOUT

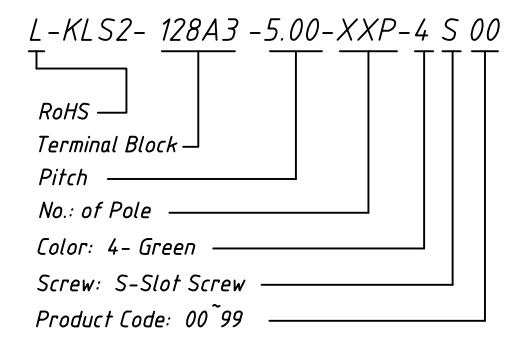


**Material**  
**Housing:** PA66, UL94V-0  
**Pin header:** Brass, Tin plated  
**Clamp:** Brass, Ni plated  
**Screw:** M2.5, steel Zinc plated

**Electrical**  
**Rated voltage:** 300V  
**Rated current:** 15A  
**Contact Resistance:** 20 mΩ  
**Insulation resistance:** 500MΩ/DC500V  
**Withstand voltage:** AC2000V / 1 min  
**Wire Range:** 30~14AWG 2.5mm<sup>2</sup>

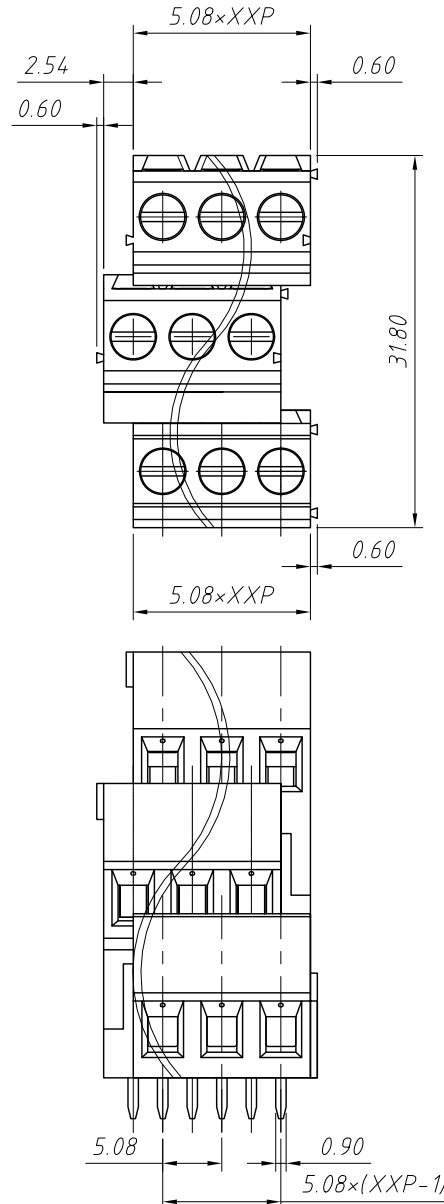
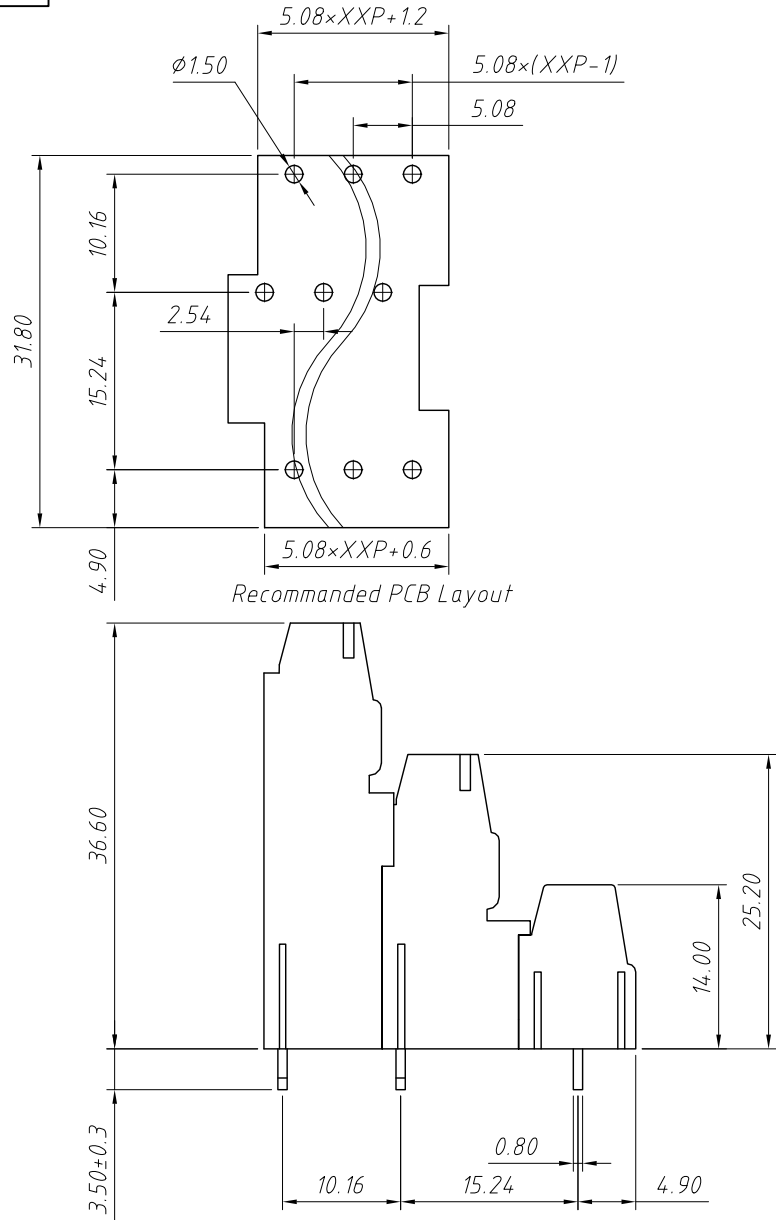
**Mechanical**  
**Temp. Range:** -40 °C ~ +105 °C  
**Strip length:** 6~7mm  
**Torque:** 0.4Nm (3.5Lb.in)

**Order Information**



GENERAL TOLERANCE		ANGLE TOLERANCE		Description:	
X. ±0.60		X. ±5°		Screw CONN TERM Block 5.00mm	
.X ±0.38		.X ±3°		KLS P/N:	KLS2-128A3-5.00-XXP-4S
.XX ±0.25		.XX ±2°			
Draw by	2015-09-01	PROJECTION		NingBo KLS ELECTRONIC CO.,L TD.	
Check by	2015-09-15	UNITS	mm		
SCALE		SHEET SIZE	A4		

1 RoHS Compliance



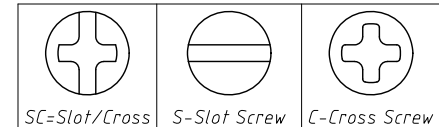
REV	SYM	Revision Record	Appr.	Date
V0	KLS02006	New Version Release	WuHao	2024-11-12

Electrical Characteristics	UL	IEC
Rated Voltage	300V	250V
Rated Current	15A	18A
Withstand Voltage	1600V/1 min	4.0 KV
Wire Range	30 ~ 14 AWG	0.5 ~ 2.5mm <sup>2</sup>

Material  
 Housing: PA66, UL 94V-0  
 Pin Header: Copper Alloy, Sn plated  
 Strip Length: 6 ~ 7 mm  
 Screw/Torque: M2.5/0.4N.m Max  
 Operating Temperature: -40°C ~ +105°C  
 Soldering Temperature: +260°C, For 5 Sec

Order Information  
 L-KLS2-128A3-5.08-XXP-X X

RoHS  
 Terminal Block  
 Pitch: 5.08mm  
 No.: of (3x02 ~ 3x24) Pole  
 Color:  
 1=Gray 2=Blue 3=Black  
 4=Green 5=Orange 6=Red  
 7=Transp 8=Yellow 9=White  
 Screw: SC=Slot/Cross  
 S-Slot Screw C-Cross Screw



ANGLE TOLERANCE	PROJECTION	Description:
$\pm 3^\circ$		Pitch 5.08mm Terminal Blocks
GENERAL TOLERANCE	UNITS	mm
x.x $\pm 0.30$	SHEET SIZE	A4
x.xx $\pm 0.20$	Draw:	WuHao 2024-11-12
x.xxx $\pm 0.10$	Check:	Daniel 2024-11-12
		KLS NingBo KLS ELECTRONIC CO.,LTD.