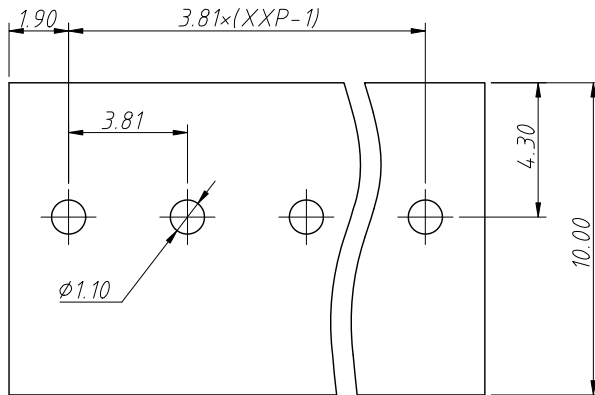
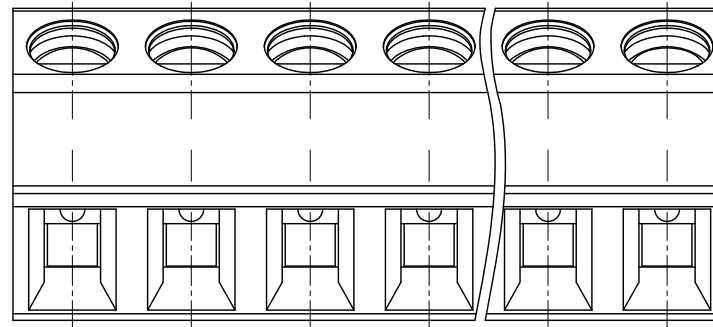


1 RoHS Compliance

REV	SYM	Revision Record	Appr.	Date
V0	KLS02006	New Version Release	Song	2024-09-10



Recommended PCB Layout



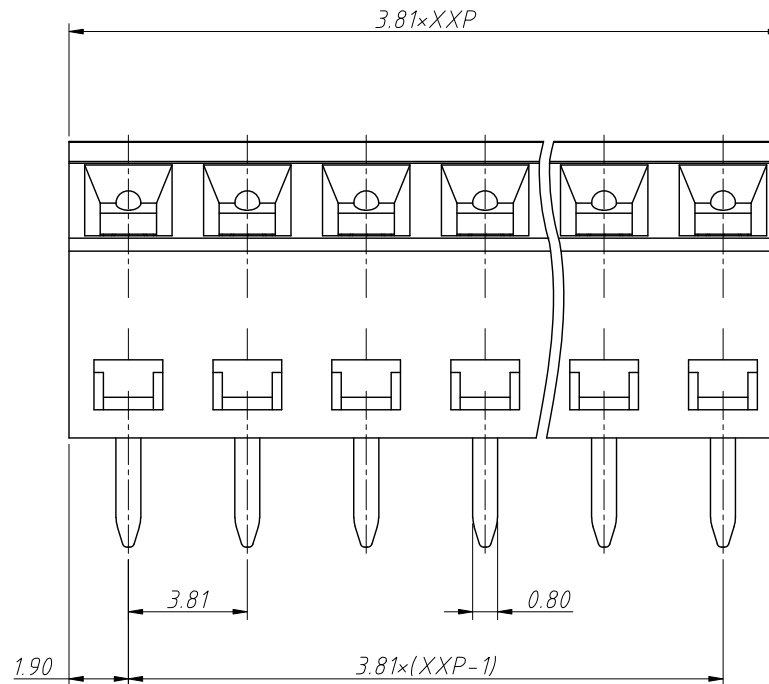
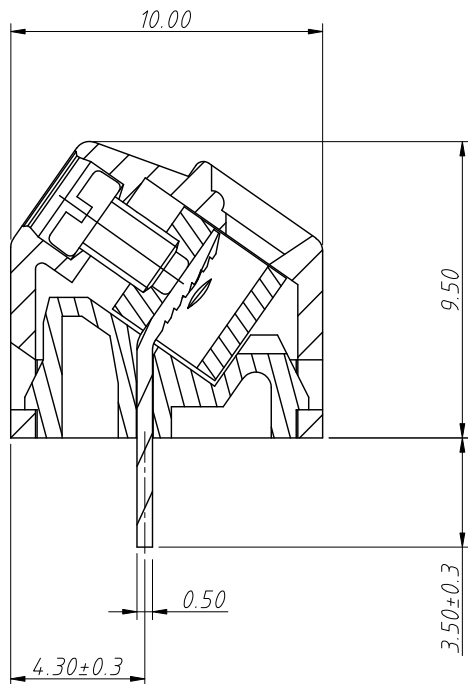
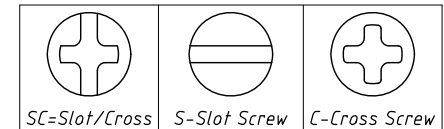
Electrical Characteristics	UL	IEC
Rated Voltage	300V	160V
Rated Current	10A	10A
Withstand Voltage	1600V/min	2.5KV
Wire Range	26 ~ 16 AWG	0.2 ~ 1.5mm ²

Material and other:
 Housing:PA66, UL94V-0
 Pin Header:Coppo Alloy, Sn Plated
 Screw:M2.0
 Stripping Length:5mm
 Torque:0.2N.m
 Temp. Range:-40°C ~ +105°C

Order Information

L-KLS2-101-3.81-05P-4 S

RoHS
 Terminal Block
 Pitch:3.81mm
 No.:Of (02 ~ 24) Pin
 Color:1=Gray 2=Blue 3=Black
 4=Green 5=Orange 6=Red
 7=Transp 8=Yellow 9=White
 Screw:SC=Slot/Cross
 S-Slot Screw C-Cross Screw



ANGLE TOLERANCE	PROJECTION	Description:	Pitch 3.81mm Terminal Block	
±3°				
GENERAL TOLERANCE	UNITS	mm	KLS P/N:	L-KLS2-101-3.81-XXP-XX
.x ±0.30	SHEET SIZE	A4		
.xx ±0.20	Draw:	Song	2024-09-10	NingBo KLS ELECTRONIC CO.,L TD.
.xxx ±0.10	Check:	Daniel	2024-09-10	