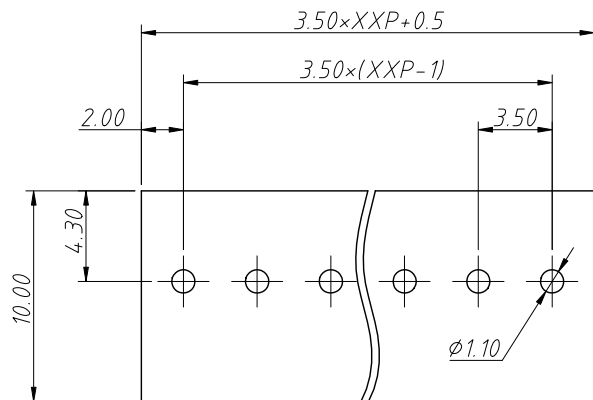
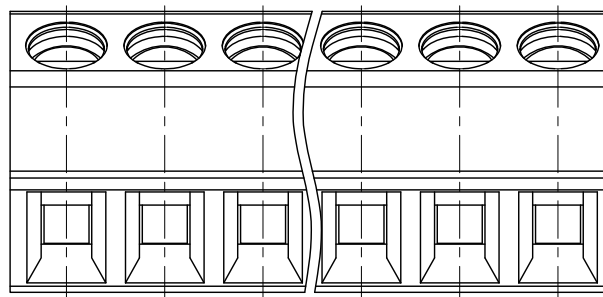


1 RoHS Compliance

REV	SYM	Revision Record	Appr.	Date
V0	KLS02006	New Version Release	Song	2024-09-09

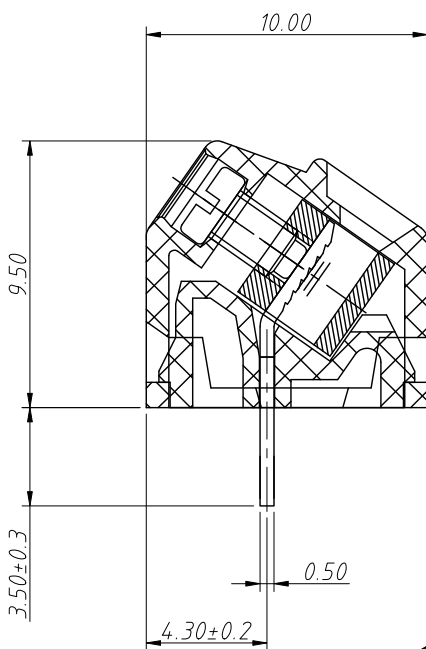


Recommended PCB Layout

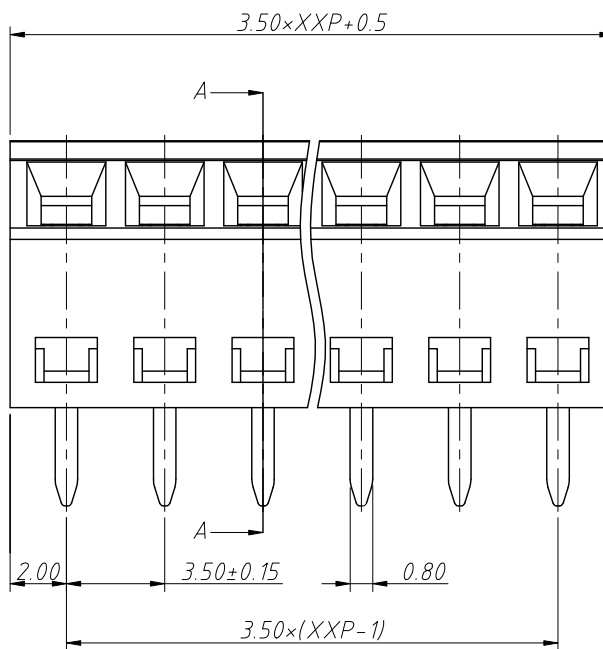
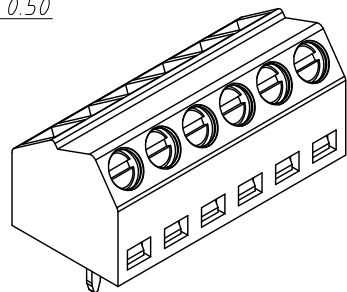


Electrical Characteristics	UL	IEC
Rated Voltage	300V	160V
Rated Current	10A	10A
Withstand Voltage	1600V/1min	2.5KV
Wire Range	26 ~ 16 AWG	0.2 ~ 1.5mm ²

Material and other:
 Housing:PA, UL 94 V-0
 Pin Header:Coppo Alloy, Sn Plated
 Screw/Torque:M2/0.2N.m
 Stripping Length:6 ~ 7mm
 Operating Temperature:-40°C ~ +105°C



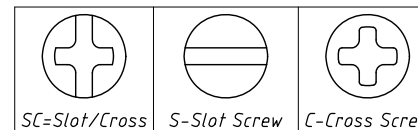
SECTION A-A



Order Information

L-KLS2-108-3.50-XXP-X X

RoHS
 Terminal Block
 Pitch:3.50mm
 No.:Of (02 ~ 24) Pin
 Color:1=Gray 2=Blue 3=Black
 4=Green 5=Orange 6=Red
 7=Transp 8=Yellow 9=White
 Screw:SC=Slot/Cross
 S-Slot Screw C-Cross Screw



ANGLE TOLERANCE	PROJECTION	Description:
±3°		Pitch 3.50mm Screw Fixation Terminal Block
GENERAL TOLERANCE	UNITS	mm
0 ~ 30	±0.50	
30 ~ 60	±0.75	
60 ~ 90	±1.00	
SHEET SIZE	A4	
Draw:	Song	2024-09-09
Check:	Daniel	2024-09-09
KLS ELECTRONIC		NingBo KLS ELECTRONIC CO.,L TD.