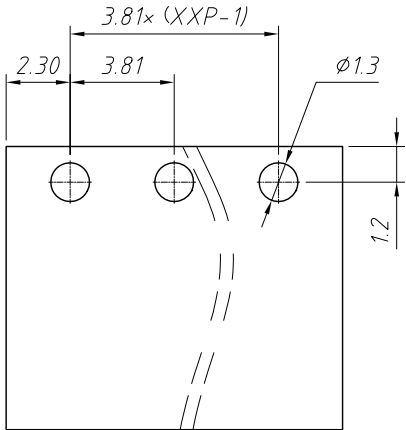
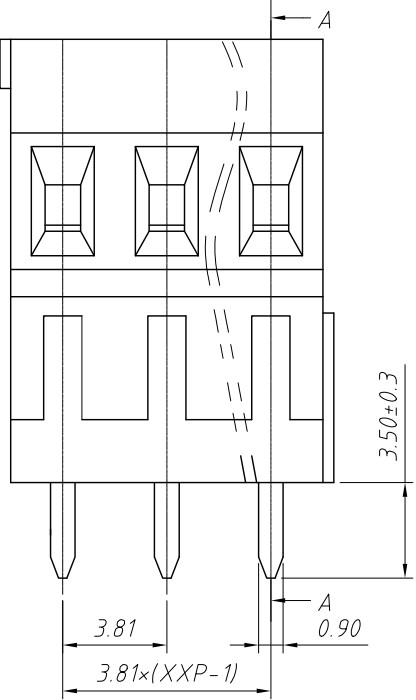
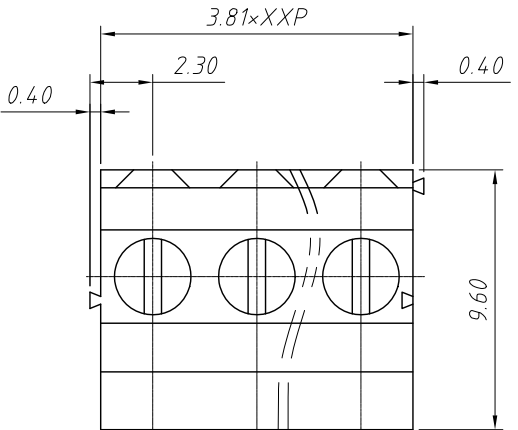
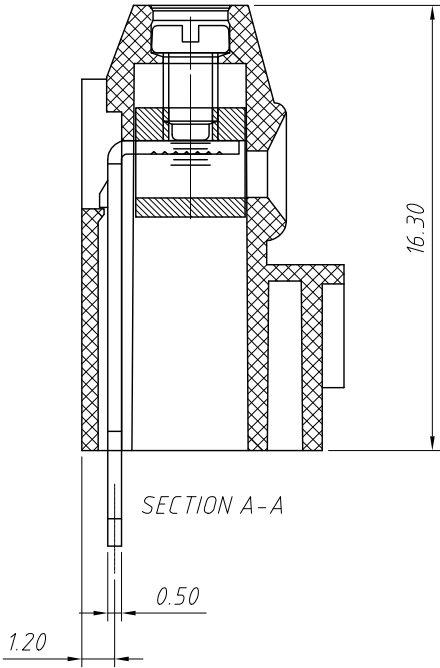


1
RoHS Compliance



Recommended PCB Layout



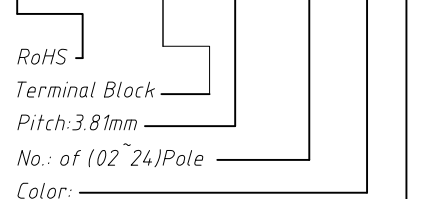
REV	SYM	Revision Record	Appr.	Date
V0	KLS02006	New Version Release	WuHao	2024-11-12

Electrical Characteristics	UL	IEC
Rated Voltage	300V	160V
Rated Current	10A	13.5A
Withstand Voltage	AC2000V/1min	---
Wire Range	28~16 AWG	1.0mm ²

Material
 Housing:PA66,UL94V-0 Pin Header:Copper Alloy,Sn plated
 Cage:Copper Alloy,Ni Plated Steip Length:4~5 mm
 Screw/Torque:Steel,M2.0,Zn Plated/0.2N.m Max
 Temp.Range:-40°C ~ +105°C Soldering:+250°C,For 5 Sec
 Contact resistance:20mΩ MAX
 Insulation resistance:500MΩ/DC500V

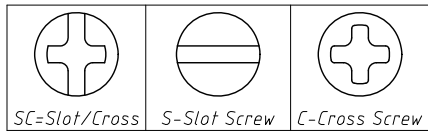
Order Information

L-KLS2-125H-3.81-XXP-X X



- Color:
 1=Gray 2=Blue 3=Black
 4=Green 5=Orange 6=Red
 7=Transp 8=Yellow 9=White

Screw:SC=Slot/Cross
 S-Slot Screw C-Cross Screw



ANGLE TOLERANCE	PROJECTION	Description:
±3°		Pitch 3.81mm Terminal Blocks
GENERAL TOLERANCE	UNITS	mm
x.x ±0.30	SHEET SIZE	A4
x.xx ±0.20	Draw:	WuHao 2024-11-12
x.xxx ±0.10	Check:	Daniel 2024-11-12
		L-KLS2-125H-3.81-XXP-XX
		NingBo KLS ELECTRONIC CO.,L TD.