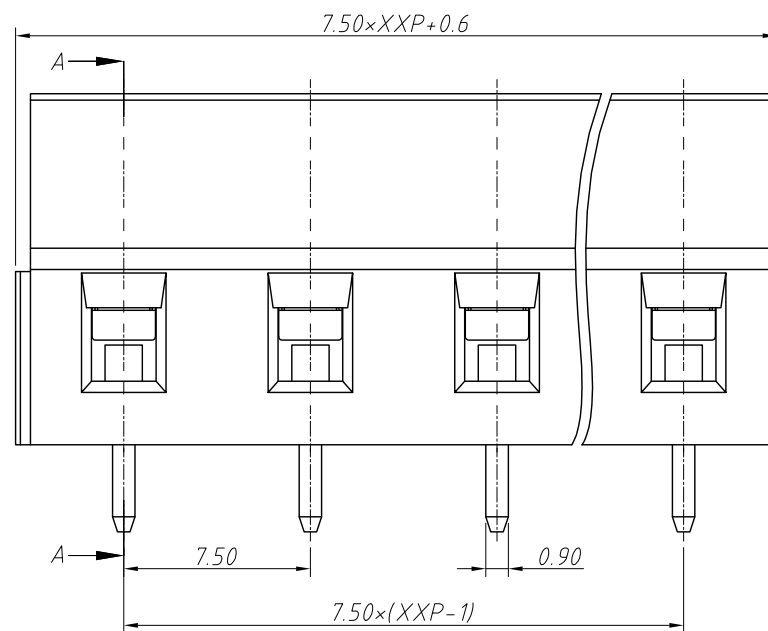
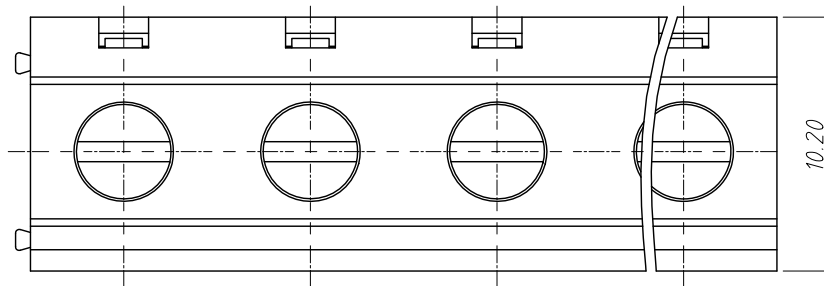
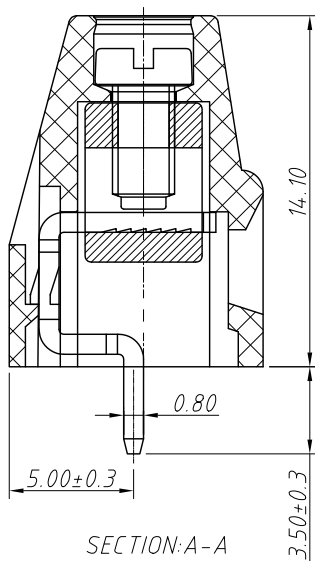


Recommended PCB Layout

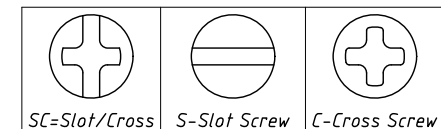
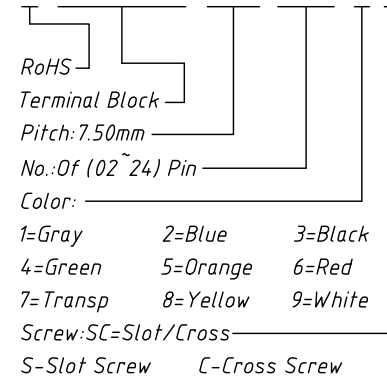


REV	SYM	Revision Record	Appr.	Date
V0	KLS02006	New Version Release	WuHao	2024-09-18

Electrical Characteristics	UL	IEC
Rated Voltage	300V	450V
Rated Current	16A	20A
Withstand Voltage	AC2000V/1min	---
Wire Range	12~22 AWG	2.5mm ²

Order Information

L-KLS2-128-7.50-XXP-X X



Material and other:

Housing: PA66, UL 94V-0

Pin header: Copper Alloy, Sn Plated Cage: Copper Alloy, Ni Plated

Screw/Torque: M2.5 Zn Plated / 0.4N.m Max.

Contact resistance: 20mΩ

Insulation resistance: 500MΩ/DC500V

Steip Length: 6-7mm

Temp. Range: -40°C ~ +105°C Max Soldering: +250°C, for 5 Sec

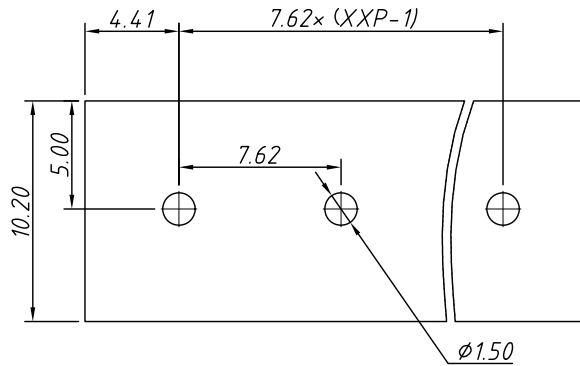
ANGLE TOLERANCE	PROJECTION	Description:
±3°		Pitch 7.50mm Screw fixation Terminal Block
GENERAL TOLERANCE	UNITS	mm
0~30 ±0.50	SHEET SIZE	A4
30~60 ±0.75	Draw:	WuHao 2024-09-18
60~90 ±1.00	Check:	Daniel 2024-09-18



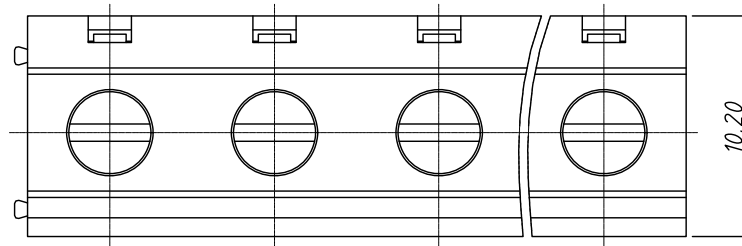
NingBo KLS ELECTRONIC CO., L TD.

1 RoHS Compliance

REV	SYM	Revision Record	Appr.	Date
V0	KLS02006	New Version Release	WuHao	2024-09-18



Recommended PCB Layout



Electrical Characteristics	UL	IEC
Rated Voltage	300V	450V
Rated Current	16A	20A
Withstand Voltage	1600V / 1 min	6.0KV
Wire Range	12~22 AWG	0.5~2.5mm ²

Material and other:

Housing:PA66,UL 94 V-0

Pin header:Copper alloy,Sn Plated

Screw/Torque:Steel,M2.5/0.4N.m Max.

Steip Length:6-7mm

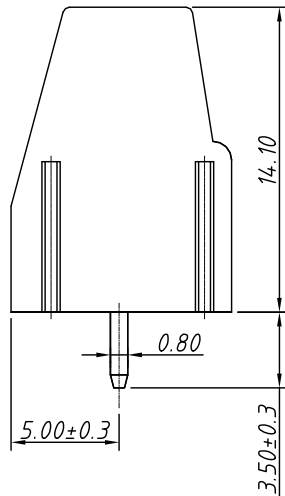
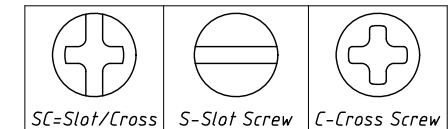
Max Soldering:+260°C,for 5 Sec

Operating temperatur:-40°C ~ +105°C

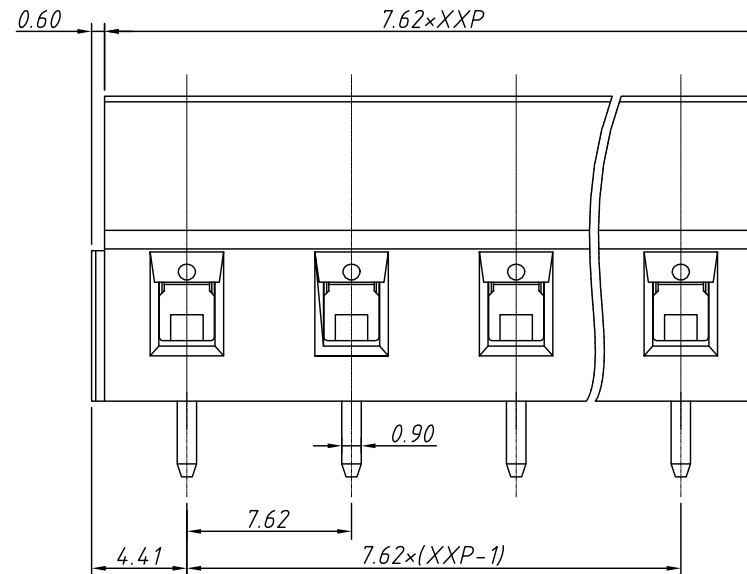
Order Information

L-KLS2-128-7.62-XXP-X X

RoHS
Terminal Block
Pitch:7.62mm
No.:Of (02~24) Pin
Color:
1=Gray 2=Blue 3=Black
4=Green 5=Orange 6=Red
7=Transp 8=Yellow 9=White
Screw:SC=Slot/Cross
S-Slot Screw C-Cross Screw



SECTION: A-A



ANGLE TOLERANCE	PROJECTION	Description:
±3°		Pitch 7.62mm Screw fixation Terminal Block
GENERAL TOLERANCE	UNITS	mm
0~30 ±0.50	SHEET SIZE	A4
30~60 ±0.75	Draw:	WuHao 2024-09-18
60~90 ±1.00	Check:	Daniel 2024-09-18
		L-KLS2-128-7.62-XXP-XX



NingBo KLS ELECTRONIC CO.,L TD.